

WACOM

graphire

**USER'S MANUAL
FOR WINDOWS®**



Navigation

Contents

Index



All rights reserved. No part of this manual may be reproduced except for your express personal use. Wacom reserves the right to revise this publication without obligation to provide notification of such changes. Wacom does its best to provide current and accurate information in this manual. However, Wacom reserves the right to change any specifications and product configurations at its discretion, without prior notice and without obligation to include such changes in this manual.

TRADEMARKS

Wacom is a registered trademark. Graphire and DuoSwitch are trademarks of Wacom Company, Limited. Acrobat® Reader Copyright © 1987-2000 Adobe Systems Incorporated. All rights reserved. Adobe and Acrobat are trademarks of Adobe Systems Incorporated which may be registered in certain jurisdictions. Microsoft, IntelliMouse, Windows, and Windows NT are either registered trademarks or trademarks of Microsoft Corporation in the United States and/or other countries. Any additional company and product names mentioned in this documentation may be trademarked and/or registered as trademarks. Mention of third-party products is for information purposes only and constitutes neither an endorsement nor a recommendation. Wacom assumes no responsibility with regard to the performance or use of these products.



Contents



Index

RADIO AND TELEVISION INTERFERENCE

The equipment described in this manual generates, uses, and can radiate radio-frequency energy. If it is not installed and used properly—that is, in strict accordance with Wacom instructions—it may cause interference with radio and television reception.

FCC NOTICE

This equipment has been tested and found to comply with the limits for a Class B digital device, pursuant to Part 15 of FCC Rules. These limits are designed to provide reasonable protection against harmful interference in a residential installation.

This equipment generates, uses and can radiate radio frequency energy and, if not installed and used in accordance with the instructions, may cause harmful interference to radio communications. However, there is no guarantee that interference will not occur in a particular installation.

You can determine whether the tablet is causing interference by powering it off. If the interference stops, it was probably caused by the tablet.

If your tablet does cause interference to radio or television reception, you may be able to correct the interference by using one or more of the following measures:

- Rotate the television or radio antenna until the interference stops.
- Move the tablet farther away from the television or radio.
- Plug the tablet and computer into an outlet that is on a different circuit from the television or radio.

If necessary, consult your Wacom dealer or an experienced radio/television technician for help.

Changes or modifications to this product not authorized by Wacom could void the FCC Certification and negate your authority to operate the product.



Contents

Index

CE DECLARATION

The Graphire™ digitizing tablet, model ET-0405-R, has been tested by the WAVE Corporation in Japan, and model ET-0405-U has been tested by the Tokin Corporation in Japan and found to comply to the following harmonized European Norms:

- EN 50082-1 (electromagnetic immunity)
- EN 55022 Class B (electromagnetic emissions)

Based on the results of these tests, Wacom declares that the above mentioned devices conform to Article 10.1 of the European Council Directive 89/336/EEC and to the European Council Directive 73/23/EEC, and indicates this conformity by the CE-sign on each device.

The device must be installed and operated always in strict accordance to the instructions given in this handbook. Any changes or modifications to this product that were not specifically authorized by Wacom will invalidate this declaration.



Contents

Index

TABLE OF CONTENTS

Trademarks	2	Setting Up Your Work Area	23
<u>Radio and Television Interference</u>	3	<u>Working with the Tablet</u>	24
FCC Notice	3	<u>Using the Graphire Pen</u>	25
CE Declaration	4	Holding the Pen	25
About the Manual	8	Pointing	26
<u>Navigating the Manual</u>	10	Clicking	27
INSTALLATION	11	Using the Side Switch	28
<u>Things to Know Before Installation</u>	12	Dragging	29
<u>USB Tablet Installation</u>	13	Proximity	30
Installing the Hardware	13	Drawing with Pressure	31
Installing the Software	14	Erasing	32
<u>Serial Tablet Installation</u>	15	Eye-Hand Coordination Exercise	33
Installing the Hardware	15	<u>Using the Graphire Cordless Mouse</u>	34
Installing the Software	16	Using the Cordless Mouse Fingerwheel	35
Windows 98, Me, and 2000 (Plug and Play Install)	16	<u>Caring for Your Tools and Tablet</u>	36
Windows 95 and NT 4.0 (Manual Install)	17	Replacing the Pen Tip	37
<u>Uninstalling the Software</u>	18	CUSTOMIZING	38
<u>Registration</u>	18	<u>Opening the Control Panel</u>	39
<u>Product Information</u>	18	<u>Control Panel Features</u>	40
USING GRAPHIRE	19	Tabs	41
<u>Appearance and Features</u>	20	Control Panel Lists	43
<u>Graphire Tablet</u>	20	Control Panel Buttons	45
<u>Graphire Tools</u>	21		



Contents

Index

TABLE OF CONTENTS

Page 5

Customizing Your Pen and Cordless Mouse	46	Pull-Down Menus	77
Graphire Pen Tabs	46	File	77
Graphire Cordless Mouse Tabs	47	Edit	77
Adjusting Tip Feel	48	Add	78
Adjusting Double-Click	49	Remove	78
Customizing Tool Buttons	50	Language	79
Button Functions	51	Help	79
Adjusting Eraser Feel	55	ADVANCED FEATURES	80
Tablet to Screen Mapping	56	Advanced Tip Pressure Settings	81
Positioning Mode	58	Click Force Adjustment	82
Orientation	59	Pressure Curve Adjustment	83
Aspect	60	Advanced Eraser Pressure Settings	85
Tablet Area	61	Copying Settings	86
Display Area	63	HAVING TROUBLE?	87
Customizing the Graphire Cordless Mouse	64	Troubleshooting	88
Customizing the Cordless Mouse Fingerwheel	65	Testing USB Tablets	88
Customizing the Pop-up Menu	66	Verifying Your Computer is USB Ready	89
Add Keystrokes	67	Testing Serial Tablets	90
Add Mapping Options	67	Testing Your Graphire Tools	91
Removing Keystrokes and Mapping Options	67	Testing the Graphire Pen	91
Working with Graphire Tools	68	Testing the Graphire Cordless Mouse	92
Adding a Tool	69	Troubleshooting Tables	93
Working with Application-Specific Settings	70	USB Tablet Problems	93
Creating an Application-Specific Setting	72	Serial Tablet Problems	94
Adding a Tool to an Application's Tool List	74	General Problems	94
Changing Settings for a Specific Application and Tool	75	Windows-Specific Problems	97
Removing Application-Specific Settings	75		
Checking Your Serial Tablet Connection	76		



Contacting Technical Support	99
Linking to the Web Page	99
Pre-Contact Checklist	99
Who to Call	100
USA, Canada, Central and South America	101
Europe, Middle East and Africa	102
Japan	103
Asia Pacific (English)	103
APPENDICES	104
Installing Multiple Tablets	105
Product Specifications	106
Graphire Tablet (Models ET-0405-R, ET-0405-U)	106
Graphire Pen (Model EP-100E)	107
Graphire Cordless Mouse (Model EC-100)	107
Graphire Inking Pen (Model EP-200, optional)	107
Parts and Accessories	108
Ordering Parts and Accessories	108
License and Warranties	109
Software License	109
Limited Warranty	110
Warranty on Sales Outside of U.S. and Canada	112
License and Warranties (Europe, Africa and Middle East)	113
Software License Agreement	113
Limited Warranty and Liability	114
Liability of WACOM	115
GLOSSARY	116
INDEX	120



Contents



Index



TABLE OF CONTENTS

Page 7

ABOUT THE MANUAL

This interactive User's Manual provides quick access to information about Graphire. Just click on a navigation button or highlighted word to move through the document. The information is common to both serial and USB tablets, unless otherwise noted.

- The [Table of Contents](#) enables you to go directly to a topic by clicking on it.
- [Installation](#) describes how to install the hardware and software, and how to uninstall the software.
- [Using Graphire](#) introduces you to the many capabilities of your Graphire pen and mouse set, including a description of the features and functions of your Graphire tools. This section also includes exercises for new users.
- [Customizing](#) describes how you can change the control panel settings to optimize your Graphire pen and mouse set for your personal work style.
- [Advanced Features](#) allow further customization of your Graphire pen and mouse set. Explore them after you have become familiar with using Graphire and the basic control panel settings.
- [Having Trouble?](#) Need troubleshooting guidelines? Do you have a question for Technical Support? You will find the answers to most common questions here.
- The [Appendices](#) include product specifications, license and warranty information, and a listing of replacement parts and accessories. If you are using more than one tablet on your computer, you will find instructions on adding and working with multiple tablets.

If you are new to electronic documentation, be sure to read [Navigating the Manual](#).



Contents



Index

SMALL CAPITAL LETTERS are used to identify the names of keyboard keys, dialog boxes, and control panel options.

As you read through the *Customizing* and *Advanced Features* chapters, you will notice that the screen shots of the control panel tabs do not show the [tab buttons](#). These are intentionally left out in order to save space within the manual.

Remember that you can always use the Acrobat Reader zoom-in tool to increase the size of the manual on your display screen.

Certain kinds of information are not included in this manual:

- Information about your specific computer hardware.
- Information about your operating system.
- Information about other Wacom tablets.
- Information about application software. Many graphics applications have built-in support for Graphire features (such as pressure-sensitivity and eraser support). You can find a listing of applications that support these features at Wacom's web site (see [Product Information](#)). Refer also to your application manuals for information on how best to use Graphire features within specific applications.

Your best reference source for the above information is the set of manuals and disks that came with your hardware, operating system, applications, or other Wacom tablets.



[Contents](#)

[Index](#)

NAVIGATING THE MANUAL

Use the navigation controls to move through the manual:



Go to front page.



Go to Table of Contents.



Go to Index.



Go back to previous view.



Page back, or page forward.



HEADING TEXT Go to beginning of section.

Topic

Go to topic.



Topic continued.

The Acrobat Reader provides you with additional tools for using and printing the manual. Refer to the *Acrobat Reader Online Guide* for more information.



Contents

Index

INSTALLATION

USB tablets are compatible with Windows 98, Windows Me, Windows 2000, and with all applications that support a mouse.

Graphire serial tablets are compatible with Windows 95, 98, Me, NT 4.0, Windows 2000, and with all applications that support a mouse.

THINGS TO KNOW BEFORE INSTALLATION

USB TABLET INSTALLATION

SERIAL TABLET INSTALLATION

UNINSTALLING THE SOFTWARE

REGISTRATION



Contents



Index

THINGS TO KNOW BEFORE INSTALLATION

For USB tablets, your computer must be USB ready and the USB port or hub you are connecting your tablet to must be active. See [Verifying Your Computer is USB Ready](#) for more information.

For serial tablets:

- Turn off your computer and attach the tablet *before* installing the software.
- If your computer does not have an available serial port, you will need to remove an existing serial device or add an additional serial port.
- Some computers have a built-in modem and the external serial port may be disabled or configured with the same serial port address as the modem. If your tablet does not communicate properly after installing the hardware and software, check your serial port to verify that it is properly configured. See [Having Trouble?](#) for more information.
- If you are using a [DOS shell](#) under Windows 95 or later or NT 4.0, Graphire will automatically function in the DOS shell after you install the Wacom drivers for Windows.



[Contents](#)

[Index](#)



INSTALLATION

Page 12

USB TABLET INSTALLATION

INSTALLING THE HARDWARE

Graphire USB tablets require a Windows 98, Me, or 2000 system with USB port. Graphire supports hot-plugging, which allows you to connect or disconnect Graphire while your computer is turned on.

1. Plug Graphire...
 - ...into an active USB port on your computer
 - ...or into an active USB hub.
2. If your computer is off, turn it on and allow the operating system to fully load.

Windows 98 . The tablet LED will start blinking and the NEW HARDWARE FOUND dialog box will display, followed by the ADD NEW HARDWARE WIZARD. (If the dialog does not display, your computer may not be USB Ready; go to [Having Trouble?](#)) Follow the prompts, making sure to select the default options.

Note: Please have your Windows 98 CD available. If Windows 98 came bundled with your computer, the Windows 98 CAB files may be located on your hard disk or on your system recovery CD. You may be prompted to insert the Windows 98 CD. If so, click OK and enter the location of the Windows CAB files (e.g., D:\WIN98).

Windows Me and 2000. Graphire will automatically register as a USB device and the LED will light.

Graphire is working in mouse emulation mode. You should be able to use your Graphire Pen or Cordless Mouse on the tablet to move the screen cursor.

Important: You must install the tablet software from the Graphire Tablet CD to get full tablet functionality.



To tablet



Contents



Index



INSTALLATION

Page 13

INSTALLING THE SOFTWARE

Graphire USB tablets require a Windows 98, Me, or 2000 system with USB port. Note that you must install the tablet software from the Graphire Tablet CD to get full tablet functionality.

- Insert the Graphire Tablet CD into the CD-ROM drive.
- Double-click on the software SETUP icon located on the Graphire Tablet CD.
- Select a language from the CHOOSE SETUP LANGUAGE dialog box and follow the prompts to complete the installation of the Graphire driver software.
- Adobe Acrobat Reader V3.0 or greater is required to view the online *Graphire User's Manual* and Help. If Acrobat Reader is already installed on your system, you may cancel this installation.

Congratulations, Graphire installation is complete. Select FINISH to close the WACOM SETUP dialog box.

You should now be able to use your Graphire Pen on the tablet to move the screen cursor in [Pen Mode](#). You can verify this by opening the Wacom control panel and choosing the MAPPING tab – the PEN MODE option should be selected. (A WACOM TABLET group was created in the START menu under PROGRAMS. It contains shortcuts to the Wacom control panel, User's Manual, and Readme file.)

If you had trouble with this installation, go to [Having Trouble?](#)

Important: If your PC was not configured with a USB keyboard or USB mouse, it may not support USB devices while in Windows Safe Mode. In this case, Graphire will not function in Safe Mode.



Contents

Index



INSTALLATION

Page 14

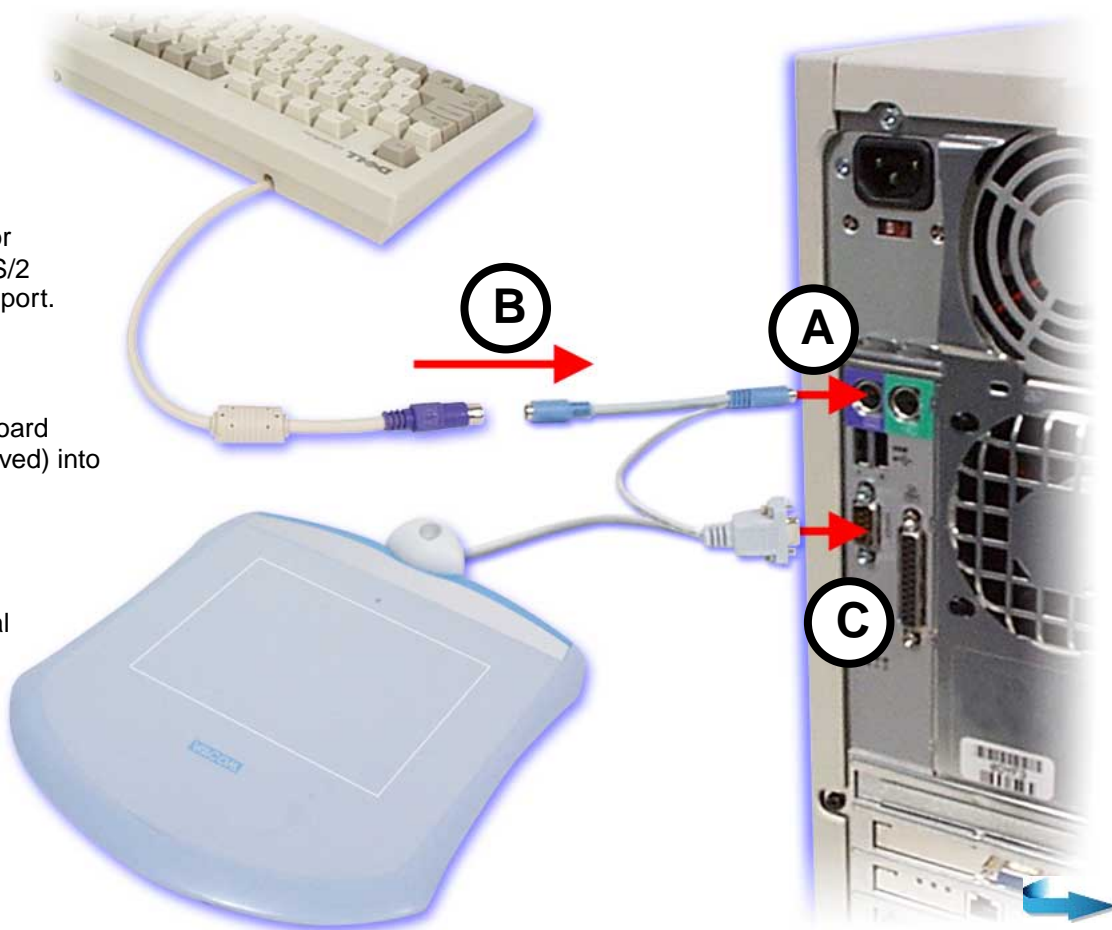
SERIAL TABLET INSTALLATION

INSTALLING THE HARDWARE

First turn off your computer.

- A. Disconnect your mouse or keyboard and plug the PS/2 tablet connector into that port.
- B. Plug your mouse or keyboard (whichever one you removed) into the adaptor cable.
- C. Plug the serial connector into your computer's serial port.

Important: You must plug in both the serial connector (C) and the power splitter cable (A) for your tablet to work.



INSTALLING THE SOFTWARE

Follow the instructions for your version of Windows.

WINDOWS 98, ME, AND 2000 (PLUG AND PLAY INSTALL)

WINDOWS 95 AND NT 4.0 (MANUAL INSTALL)

Windows 98, Me, and 2000 (Plug and Play Install)

- Turn on your computer. The tablet LED will light.
- The NEW HARDWARE FOUND dialog box will display, followed by the ADD NEW HARDWARE WIZARD. If the ADD NEW HARDWARE WIZARD does not display, follow the instructions under the [Windows 95 and NT 4.0 \(Manual Install\)](#) section.
- Insert the Graphire Tablet CD into the CD-ROM drive.
- Select the option SEARCH FOR THE BEST DRIVER FOR YOUR DEVICE (RECOMMENDED) and follow the prompts. If you are prompted for the location of the driver files, select the CD-ROM DRIVE option.
- The ADD NEW HARDWARE WIZARD will finish, and the CHOOSE SETUP LANGUAGE dialog box will display.
- Select a language from the CHOOSE SETUP LANGUAGE dialog box and follow the prompts.
- Adobe Acrobat Reader V3.0 or greater is required to view the online *Graphire User's Manual* and Help. If Acrobat Reader is already installed on your system, you may cancel this installation.

You should now be able to use your Graphire Pen or Cordless Mouse on the tablet to move the screen cursor. If the cursor does not move, you should run the Graphire SETUP program from the Graphire Tablet CD.

A WACOM TABLET group was created in the START menu under PROGRAMS. It contains shortcuts to the Wacom control panel, User's Manual, and Readme file.

Important: When starting Windows in safe mode, the driver software for Graphire will not load and the tablet will not function.

If you had any trouble with the installation, go to [Having Trouble?](#)



Contents

Index



INSTALLATION

Page 16

Windows 95 and NT 4.0 (Manual Install)

- Turn on your computer. The tablet LED will light.
- If the NEW HARDWARE FOUND dialog box displays, select CANCEL.
- Insert the Graphire Tablet CD into the CD-ROM drive.
- Click on the START button and select RUN.... In the dialog box, type the letter of your CD-ROM drive and \SETUP. For example, D:\SETUP. If your CD-ROM has a different drive letter, type that letter instead of D:. Then click OK.
Important: If you replaced your mouse with the tablet, press CTRL+ESC to open the START menu. Use the arrow keys to select RUN..., and then press ENTER.
- Select a language from the CHOOSE SETUP LANGUAGE dialog box and follow the prompts.
- Adobe Acrobat Reader V3.0 or greater is required to view the online *Graphire User's Manual* and Help. If Acrobat Reader is already installed on your system, you may cancel this installation.

You should now be able to use your Graphire Pen or Cordless Mouse on the tablet to move the screen cursor.

A WACOM TABLET group was created in the START menu under PROGRAMS. It contains shortcuts to the Wacom control panel, User's Manual, and Readme file.

Important: When starting Windows 95 or later in safe mode, the driver software for Graphire will not load and the tablet will not function.

If you had any trouble with the installation, go to [Having Trouble?](#)



Contents



Index



INSTALLATION

Page 17

UNINSTALLING THE SOFTWARE

To remove the Graphire software from your system:

1. Click the Windows START button. Then choose SETTINGS and CONTROL PANEL.
2. In the CONTROL PANEL window, double-click on the ADD/REMOVE PROGRAMS icon.
3. In the dialog box that appears, choose the Wacom tablet option.
4. Click on the ADD/REMOVE... button and follow the prompts to remove the Graphire software driver.

REGISTRATION

Please be sure to register your product. Depending on your region, the Wacom tablet may come with a Registration Card that you should complete and mail, or you may be prompted to register online during the installation process.

PRODUCT INFORMATION

To learn more about which software applications currently support the pressure-sensitivity and eraser functions of your Graphire tablet and tools, visit the Wacom web site for your region:

USA, Canada, Central and South America	http://www.wacom.com/productinfo
Europe, Middle East and Africa	http://www.wacom.de/productinfo
Japan	http://tablet.wacom.co.jp
Asia Pacific (English)	http://tablet.wacom.co.jp/asia-pacific



Contents

Index



INSTALLATION

Page 18

USING GRAPHIRE

This section introduces you to the Graphire pen and mouse set. If you are new to using a graphics tablet and tablet input tools, read the following sections. They describe your Graphire tools and explain how to use them with the tablet.

[APPEARANCE AND FEATURES](#)

[SETTING UP YOUR WORK AREA](#)

[WORKING WITH THE TABLET](#)

[USING THE GRAPHIRE PEN](#)

[USING THE GRAPHIRE CORDLESS MOUSE](#)

[CARING FOR YOUR TOOLS AND TABLET](#)



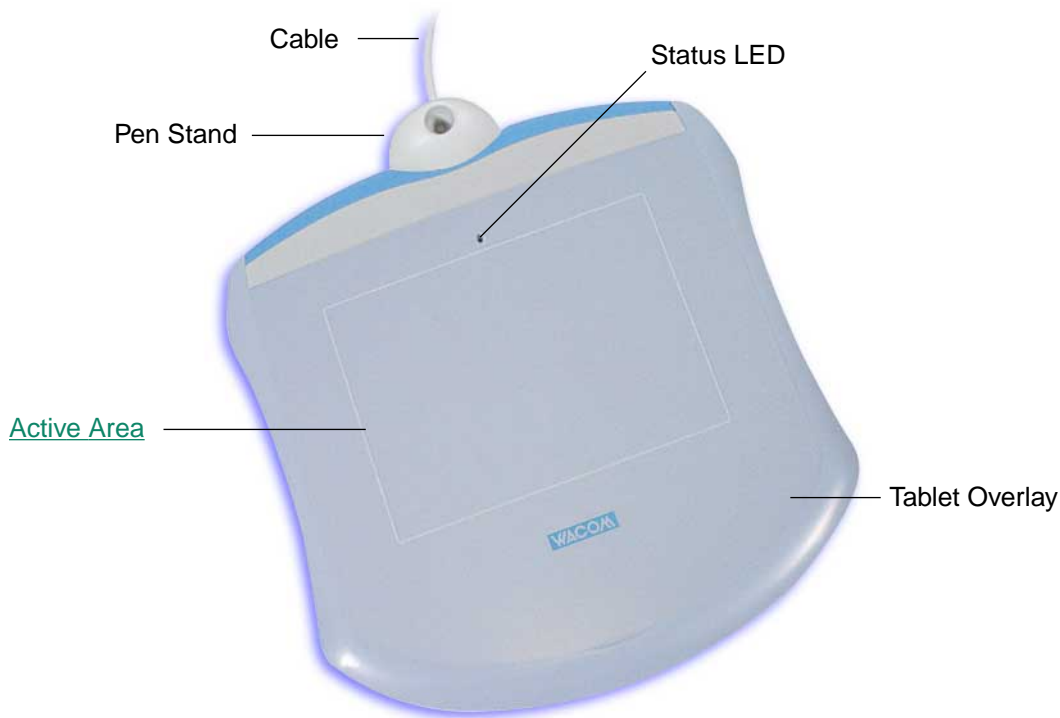
Contents

Index

APPEARANCE AND FEATURES

The Graphire Pen and mouse set consists of two basic elements: a graphics tablet that serves as your work area, and the [Graphire Tools](#) you use with the tablet.

GRAPHIRE TABLET



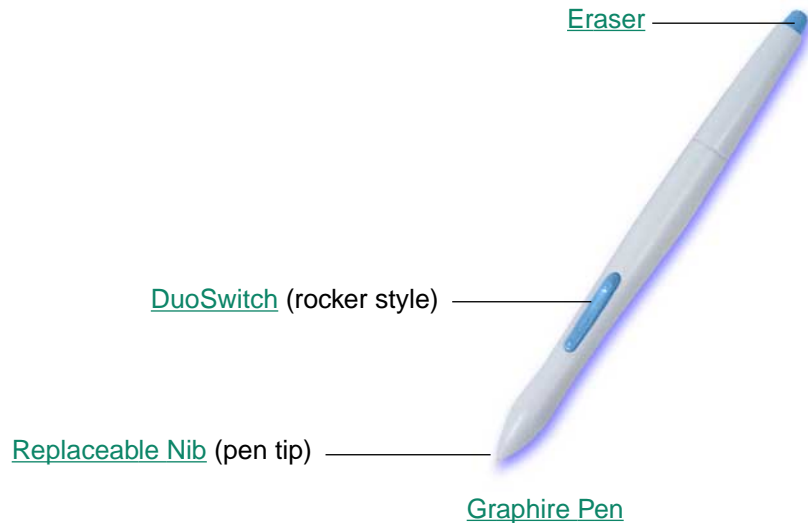
Note: To learn more about your tablet, see [Working with the Tablet](#).



GRAPHIRE TOOLS

Your Graphire tools are cordless, batteryless, and ergonomically designed.

The Graphire Pen is a pressure-sensitive freehand tool for image editing and creating natural-looking pen and brush strokes.



Contents



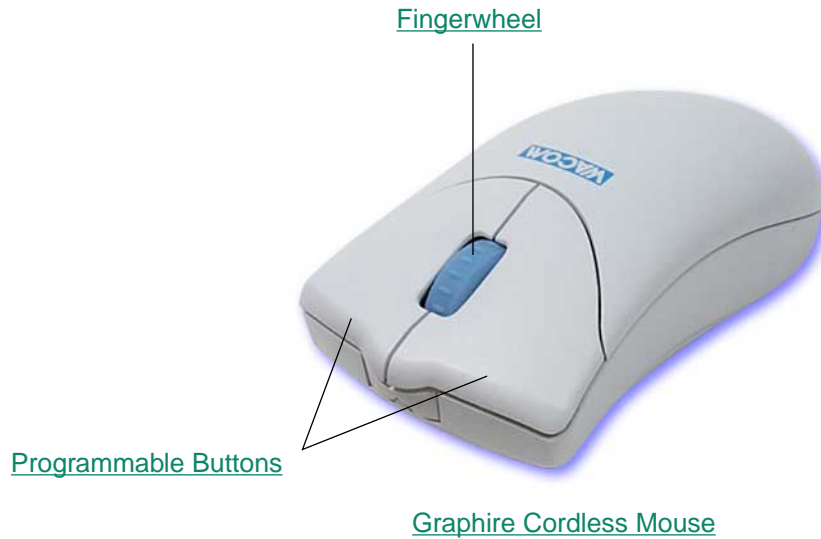
Index



USING GRAPHIRE

Page 21

The Graphire Cordless Mouse is an ideal tool for navigation, with three customizable buttons that you can program for different functions. The integrated fingerwheel is both a programmable middle button and a rolling wheel that can be used for scrolling.



Graphire Cordless Mouse



Contents



Index



USING GRAPHIRE

Page 22

SETTING UP YOUR WORK AREA

Organize your work area so you can work comfortably. Position your Graphire tablet, input tools, and keyboard so they are easily accessible without unnecessary reaching. Your monitor should be positioned so you can view it comfortably with a minimum of eyestrain.



To minimize fatigue:

- Take short breaks between tasks to stretch and relax your muscles.
- Use a gentle grip when working with your Graphire tools.
- Alternate tasks throughout the day.
- Minimize awkward postures and repetitive movements that cause discomfort.

You can attach the pen stand to better fit your work style. Refer to [Working with the Tablet](#) for additional information.



Contents



Index



USING GRAPHIRE

Page 23

WORKING WITH THE TABLET

Your tablet comes with a detachable pen stand and a transparent overlay.



For free-standing use, place the pen stand within easy reach of your tablet.



To attach the pen stand, place the stand above the tablet cable. Push the stand toward the tablet's pen stand cutout until the stand fits snugly. To detach the pen stand, slide it back away from the tablet.

To trace or digitize an image, lift the tablet overlay and slide the image beneath it.



 **Contents**
 **Index**



USING GRAPHIRE
Page 24

USING THE GRAPHIRE PEN

Your Graphire Pen is cordless, batteryless, and pressure sensitive. There are four basic techniques for using the Graphire Pen: pointing, clicking, double-clicking, and dragging. With a bit of practice, using the pen will become second nature to you. If you are unfamiliar with using a pen, try the exercises on the following pages.

HOLDING THE PEN

Hold the Graphire Pen like you would a normal pen. Make sure the DuoSwitch is in a convenient location where you can toggle it with your thumb or index finger, but not accidentally press the switch while drawing. You can tilt the pen in any way that feels most comfortable for drawing.



Position for drawing



Position for erasing

Important: When the Graphire Pen is not in use, place it in the pen stand or lay it flat on your desk. To maintain the sensitivity of your pen tip, do not store the pen in a container where it will rest on its tip.

Leaving a Graphire tool on the tablet may interfere with screen cursor positioning when using other pointing devices.



POINTING

The Graphire Pen positions the pointer (or cursor) on your screen. You can position the screen cursor two different ways, like a pen (Pen Mode) or like a mouse (Mouse Mode).

- In Pen Mode, the tablet's active area is a mapped representation of your computer screen where every point on the tablet's active area corresponds to exactly one point on the display screen; wherever you place the pen on the tablet, the screen cursor will jump to the corresponding point on the screen. This is the default setting for the Graphire Pen, and makes tracing possible—something you cannot do with a mouse.
- In Mouse Mode (the default position for the Graphire Cordless Mouse), you move the cursor with a “pick up and roll” action similar to using a mouse.

Try moving the screen cursor by lifting the Graphire Pen and placing it in a new location on the tablet. The cursor instantly jumps to the new location.

As the pen enters [Proximity](#), the tablet senses the pen above the tablet surface. You do not need to touch the tablet with the pen tip in order to move the screen cursor.

Learning Hint: If you are used to working with a mouse and find that using a pen is somewhat difficult, try the [Eye-Hand Coordination Exercise](#).

Pointing Hint: Pointing is easier when you orient the tablet so the screen cursor follows the same direction as your hand movements on the tablet.



Contents



Index



USING GRAPHIRE

Page 26

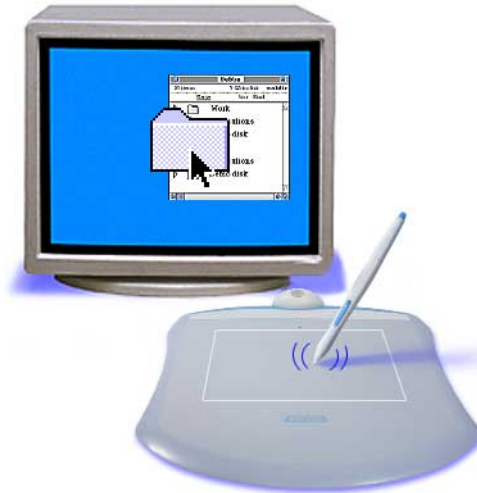
CLICKING

Clicking. To click, tap the tablet once with the tip of the Graphire Pen, or press the pen tip on the tablet with enough force to register a click. (With the pen tip, there is no audible “click” sound.)

Try clicking on a folder icon by moving the screen cursor over the icon and pressing down on the pen tip. The icon should highlight when you press.

Double Clicking. To double-click, quickly tap the tablet twice in the same place with the pen tip. This is like clicking twice with a mouse button. You can also double-click by pressing the upper side switch—this is the preferred method of double-clicking with a pen.

Try both ways of double-clicking on a folder icon to open it. First use your pen tip to do this, then use the upper side switch.



Contents



Index



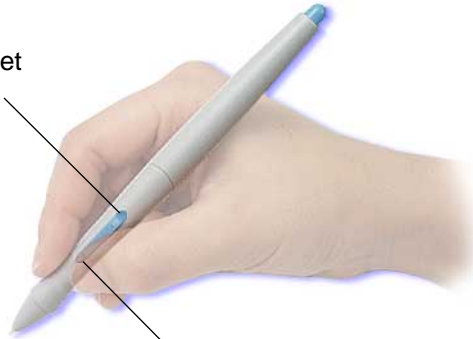
USING GRAPHIRE

Page 27

USING THE SIDE SWITCH

The Graphire Pen is equipped with a DuoSwitch. This switch has two programmable functions that can be selected by rocking the switch in either direction. You can use the DuoSwitch whenever the pen tip is in [Proximity](#) of the tablet. You do not have to touch the pen tip to the tablet in order to use the switch.

The upper switch position is set to left double-click by default.



The lower switch position is set for a right-click by default.

Windows Hint: Use right-click to bring up application-specific or icon-specific menus.

Double-Click Hint: Press the upper side switch to double-click. This is easier than tapping twice with the pen tip.

To assign new switch functions, refer to [Customizing Tool Buttons](#).



Contents

Index



USING GRAPHIRE

Page 28

DRAGGING

Dragging is used to select and move objects on the screen. To drag, first point to an object. Then press the Graphire Pen to the tablet and slide it across the tablet. The selected object will move across the screen. To select text, move the screen cursor to the beginning of a text line, then drag the Graphire Pen across the tablet until the text is highlighted.

First, try moving an icon on the screen. Then, within a document, select some text by pressing and dragging the pen tip across the text.

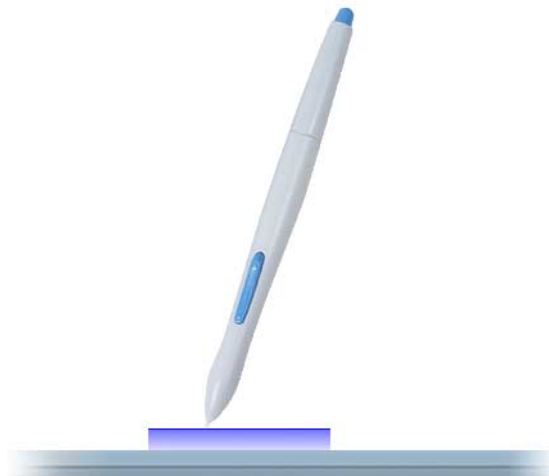


PROXIMITY

The pen is activated as soon as it enters proximity above the tablet's active area. This allows you to position the screen cursor or use the side switch without touching the pen tip to the tablet. You can also trace a drawing or photograph as long as the pen tip remains within proximity height.

Place a picture under the tablet overlay and try tracing it from within one of your graphics applications.

For the Graphire Pen, proximity is about 5 mm (0.2 inch), average.



 **Contents**
 **Index**



USING GRAPHIRE

Page 30

DRAWING WITH PRESSURE

The Graphire Pen responds to the nuance and inflection of your hand movements, enabling you to create natural-looking pen and brush strokes. Many graphics applications have drawing tools that respond to the pressure you place on the pen. For example, in some drawing programs sliders are used to vary brush characteristics (width, color, and opacity). These characteristics can be controlled much better by the Graphire Pen's pressure-sensitivity. You can vary line width, blend colors, and change opacity with the pressure you exert upon the pen.

To draw with pressure-sensitivity, select a pressure-sensitive tool from your application's tool palette. Draw along the surface of the tablet while applying various amounts of pressure downward on the tip of the Graphire Pen. Press hard for thick lines or dense color. Press gently for thin lines or softer color. To adjust the tip feel, see [Adjusting Tip Feel](#).



Visit our web site for a list of graphics applications that support pressure. See [Product Information](#).



Contents



Index



USING GRAPHIRE

Page 31

ERASING

The eraser on the Graphire Pen works like the eraser on a pencil. In graphics applications that support the pen's eraser, you can erase intuitively and naturally. When you use the pen's eraser, the application will automatically switch to the eraser tool. You can also use the eraser in many standard office applications. The eraser will not be pressure sensitive, but you can use it to select and delete text or spreadsheet cells.



Try your eraser by opening Windows Notepad and typing a few words. Use the eraser to select the text. When you lift the eraser, the text will be erased. For further information on using your eraser, see [Adjusting Eraser Feel](#).

Visit our web site for a list of graphics applications that support the eraser (see [Product Information](#)). If the eraser is not supported in an application, you can still use the eraser for navigating and drawing.



Contents



Index



USING GRAPHIRE

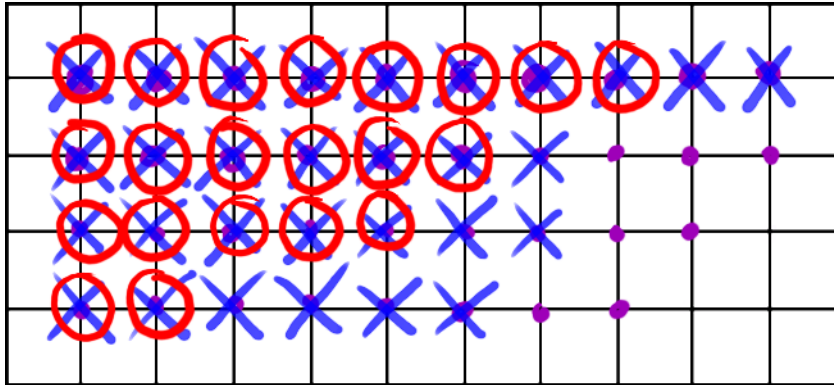
Page 32

EYE-HAND COORDINATION EXERCISE

If you use a mouse, you may remember how long it took to get used to positioning the screen cursor. Your Graphire Pen, likewise, will take a bit of practice to master the technique of positioning the screen cursor in [Pen Mode](#). This may seem difficult at first, but it is more natural and faster than in [Mouse Mode](#).

This exercise is designed to retrain your eye-hand coordination for using the Graphire Pen:

1. Open any graphics application. Use the line tool to draw a rectangular grid with line spacings of about 20-25 mm (3/4 to 1 inch). (You can use your traditional mouse to do this.)
2. Choose a free-hand tool in your application and use the Graphire Pen to draw a dot at each grid intersection.
3. Draw an X at each grid intersection.
4. Now draw a circle around each intersection. Your screen should look like this:



5. Clear your screen and make a simple drawing of your own. The more you use your Graphire Pen, the easier drawing and navigation will become.



Contents



Index



USING GRAPHIRE

Page 33

USING THE GRAPHIRE CORDLESS MOUSE

The Graphire Cordless Mouse is batteryless and works on your Graphire tablet. By moving the Cordless Mouse across the tablet's active area, you can position the screen cursor like you do with a regular mouse. The buttons are programmable, and the integrated fingerwheel is both a programmable middle button and a rolling wheel for scrolling. By default, the rolling fingerwheel provides a line scrolling capability in applications that are compatible with the Microsoft IntelliMouse wheel.

Integrated middle button and fingerwheel. By default, the button function is set to MIDDLE CLICK and the fingerwheel is set to SCROLL 3 lines per wheel notch.

The right button is set to RIGHT CLICK by default.



Hint: For MS Office 97 and 2000 applications that support a wheel mouse, press the CTRL key and move the fingerwheel to zoom in and out.

The left buttons is set to LEFT CLICK by default.

Important: When using other pointing devices, place the Graphire Cordless Mouse on your desk. Leaving a Graphire tool on the tablet may interfere with screen cursor positioning when using other pointing devices.

To learn how to program buttons, see [Customizing the Graphire Cordless Mouse](#).



Contents



Index



USING GRAPHIRE

Page 34

USING THE CORDLESS MOUSE FINGERWHEEL

To use the fingerwheel, place your hand on the Graphire Cordless Mouse with your index finger on the wheel.

- **Button function.** To use the button function, press down on the wheel to perform a button click.
- **Scrolling.** The fingerwheel will control scrolling; move the fingerwheel forward to scroll up, and back to scroll down. By default, the fingerwheel is set to SCROLL 3 lines for each notch of wheel movement in applications that support the Microsoft IntelliMouse wheel.



For a full description of fingerwheel features and functionality, see [Customizing the Cordless Mouse Fingerwheel](#).



Contents

Index



USING GRAPHIRE

Page 35

CARING FOR YOUR TOOLS AND TABLET

Keep your Graphire tools and tablet surface clean. Dust and dirt particles can stick to your Graphire tools and cause wear to the tablet surface. Regular cleaning with a soft, damp cloth will help prolong the life of your tablet surface and Graphire tools. You can also use a very mild soap diluted with water. Do *not* use volatile liquids, such as paint thinner or benzene, because they may damage the plastic case.

Keep your tablet and tools in a clean, dry place and avoid extremes in temperature. Room temperature is best. Also, your Graphire tools and tablet are not made to come apart. Twisting the pen case can break the pen. Taking apart the product will void your warranty.

Important: When the Graphire Pen is not in use, place it in the pen stand or lay it flat on your desk. To maintain the sensitivity of your pen tip, do not store the pen in a container where it will rest on the tip.



Contents

Index



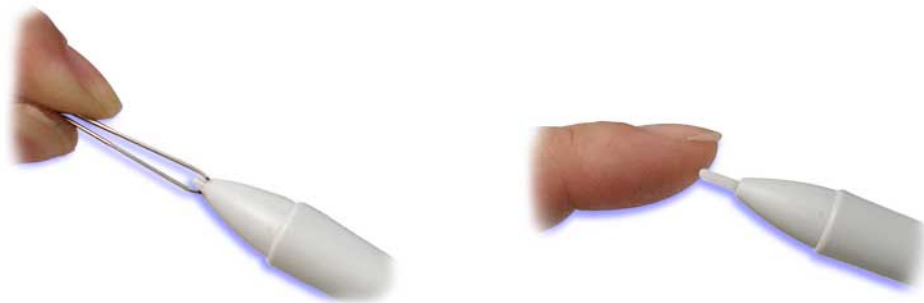
USING GRAPHIRE

Page 36

REPLACING THE PEN TIP

The tip (nib) will wear with normal use. When the nib gets too short or develops a flat point, you can replace it with another nib.

1. Clasp the old nib with a tweezer, needle-nosed plier, or similar instrument and pull it straight out of the pen.
2. Slide the end of the new nib straight into the barrel of the pen. Firmly push the nib until it stops.



To order replacement parts, refer to [Parts and Accessories](#).



CUSTOMIZING

After you master the basics of using your Graphire pen and mouse set, you may want to customize the way Graphire works. This chapter describes how to use the Wacom control panel to adjust your Graphire tool and tablet settings.

Advanced users can learn how to further optimize Graphire by creating [application-specific settings](#).

[OPENING THE CONTROL PANEL](#)

[CONTROL PANEL FEATURES](#)

[CUSTOMIZING YOUR PEN AND CORDLESS MOUSE](#)

[CUSTOMIZING THE POP-UP MENU](#)

[WORKING WITH GRAPHIRE TOOLS](#)

[WORKING WITH APPLICATION-SPECIFIC SETTINGS](#)

[CHECKING YOUR SERIAL TABLET CONNECTION](#)

[PULL-DOWN MENUS](#)



Contents

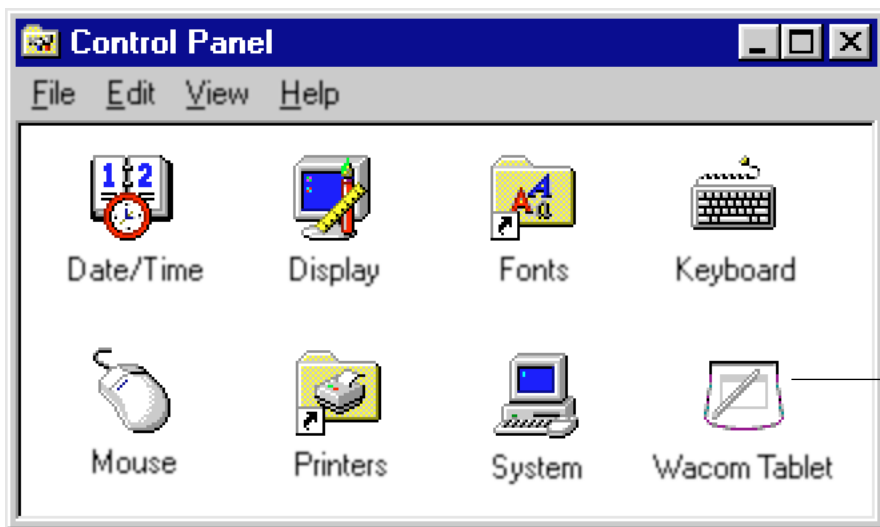


Index

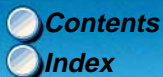
OPENING THE CONTROL PANEL

Open the control panel with the Graphire tool you wish to customize.

1. Using your Graphire tool, click on the Windows START button. Then, select SETTINGS and CONTROL PANEL.
2. Double-click on the tablet icon.



To open the Wacom control panel, double-click here with the tool you wish to customize.



CONTROL PANEL FEATURES

Use the Wacom control panel to customize your Graphire pen and mouse set.

[Pull-Down Menus](#) access many control panel features.

The [Application List](#) displays applications with customized settings.

The [Tool List](#) displays tools that are customized for the above selected application.

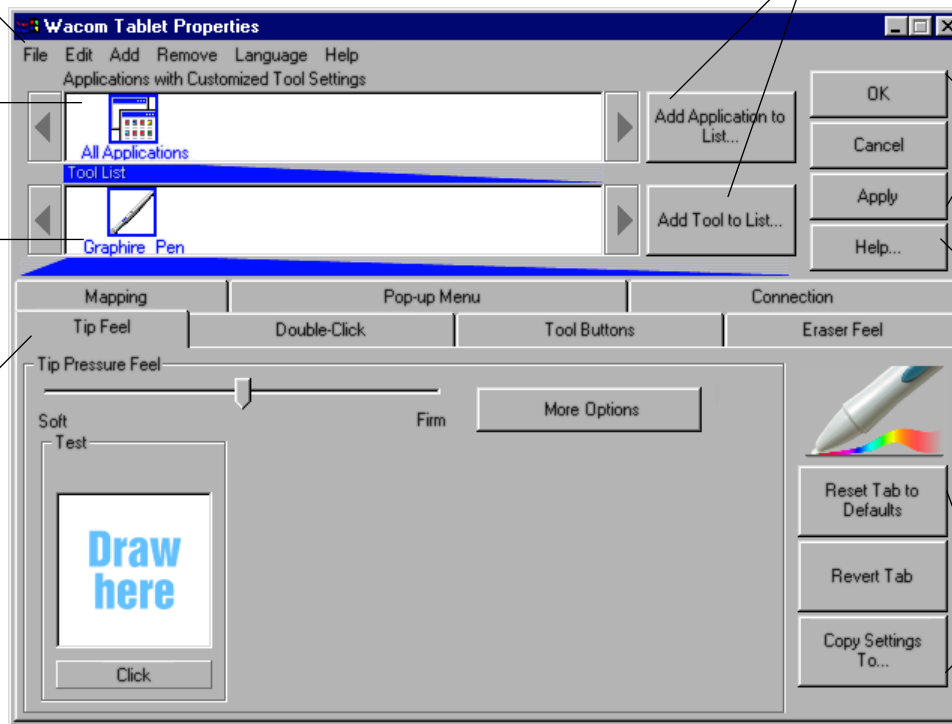
[Tabs](#) display settings for the selected application and selected tool.

These buttons add an application or tool to the lists at the left.

[Control Panel Buttons](#) apply to the entire control panel.

The [HELP...](#) button displays online Help. The information is the same as in the *Customizing and Advanced Features* chapters in this manual.

[Tab buttons](#) apply only to the selected tab.



TABS

The tabs allow you to customize your Graphire tablet, Pen, and Cordless Mouse. When you open the control panel with a Graphire tool, the tool is automatically selected in the TOOL LIST and the appropriate tabs are displayed. To change settings for your other tool, select the appropriate tool icon to display the corresponding tabs.

Displayed if you are working with a serial tablet.




These tabs are displayed for the Graphire Pen.

Note: The APPLICATION LIST is for advanced users who want to create application-specific settings; it is not necessary to select or add applications. To customize Graphire, select the Graphire Pen or Cordless Mouse from the TOOL LIST; the appropriate tabs will display for the selected tool. Then select the tab for the tool setting(s) that you want to modify.



Tab buttons apply only to the selected tab:

- To set the currently open tab to its factory default values, click



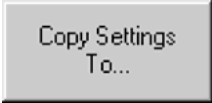
Reset Tab to
Defaults

- If you have changed settings on a tab and want to return the tab to its previously saved or last applied settings (whichever is most recent using the OK or APPLY buttons), click



Revert Tab

- To copy settings from one tool or application to another, click



Copy Settings
To...

This will display the [Copy](#)

[Settings](#) dialog box.

As you explore the control panel tabs, experiment with different settings to find what works best for you. You can always click RESET TAB TO DEFAULTS to return to the factory settings. Or, click REVERT TAB to return a tab to its previously saved or last applied settings. Refer to [Customizing Your Pen and Cordless Mouse](#) for detailed information on working with tabs.



[Contents](#)

[Index](#)



CUSTOMIZING

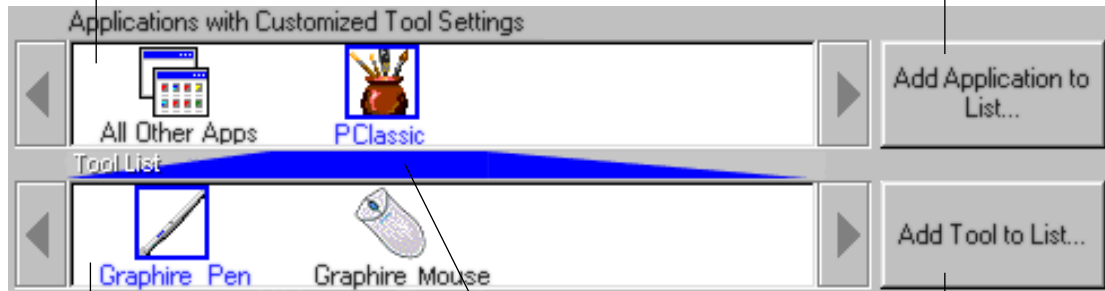
Page 42

CONTROL PANEL LISTS

Located in the upper portion of the control panel, the APPLICATION LIST and TOOL LIST allow you to create different tool settings for individual applications. For example, you might set your pen tip for a soft feel in Painter and a firm feel in all other applications.

The APPLICATION LIST displays applications that have custom tool settings associated with them.

Click to add an installed application to the APPLICATION LIST. You can customize tool settings for the selected application.



The TOOL LIST displays which of your tools (Graphire Pen or Cordless Mouse) can be customized for the application selected above.

Your current selections are highlighted. Wedges emphasize the relationship between tab settings and the selected tool and application.

Click to add a Graphire tool to the TOOL LIST. You can customize the tool for the above selected application.



- When you first install your Graphire pen and mouse set, the APPLICATION LIST displays the ALL APPLICATIONS icon. This contains tablet and tool settings for all of your applications.
- The TOOL LIST displays an icon for the Graphire Pen and Cordless Mouse. Each tool icon is automatically added to the TOOL LIST when a Graphire Pen or Cordless Mouse is first used on the tablet. See [Adding a Tool](#) for more information.

When you are ready to create custom settings for individual applications, see [Working with Application-Specific Settings](#).



Contents

Index



CUSTOMIZING

Page 44

CONTROL PANEL BUTTONS

The control panel buttons apply to all items in the control panel, including tab settings, items in control panel lists, and menu options.

- To close the control panel and save changes, click

OK

- To close the control panel without saving changes, click

Cancel

- To apply your changes and remain in the control panel, click
- are saved.

Apply

The changes you apply

- To display online Help for the control panel, click
- HELP pull-down menu.

Help...

Or, you can choose HELP... from the

Balloon Help, which provides quick information and useful tips, is also available for most control panel items. To access balloons, pause the screen cursor over the item for which you would like information. Help for individual dialog boxes is available by clicking on the HELP... button in the specific dialog box.



Contents

Index



CUSTOMIZING

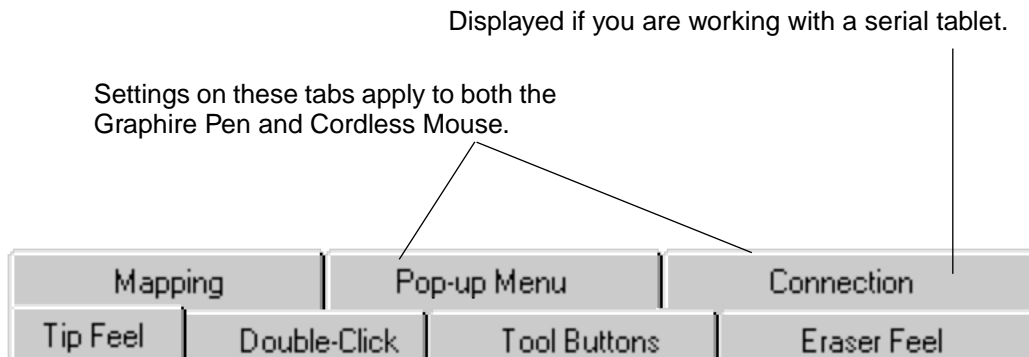
Page 45

CUSTOMIZING YOUR PEN AND CORDLESS MOUSE

To change tool settings, open the control panel using the tool you wish to customize. The tool will automatically be selected in the TOOL LIST, and the appropriate tabs will be displayed. To customize settings for a different tool, select it from the TOOL LIST by clicking on its icon.

GRAPHIRE PEN TABS

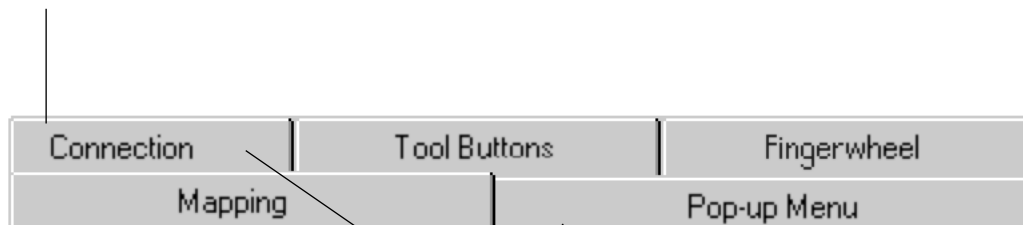
If you selected the Graphire Pen, the following tabs are displayed:



GRAPHIRE CORDLESS MOUSE TABS

If you selected the Graphire Cordless Mouse, the following control panel tabs are displayed:

Displayed if you are working with a serial tablet.



Settings on these tabs apply to both the Graphire Pen and Cordless Mouse.



ADJUSTING TIP FEEL

To adjust the sensitivity of your Graphire Pen tip, select the TIP FEEL tab. To create broad brush strokes or to click with a light touch, use a soft tip setting. For maximum control while drawing thin lines, use a firm tip setting.

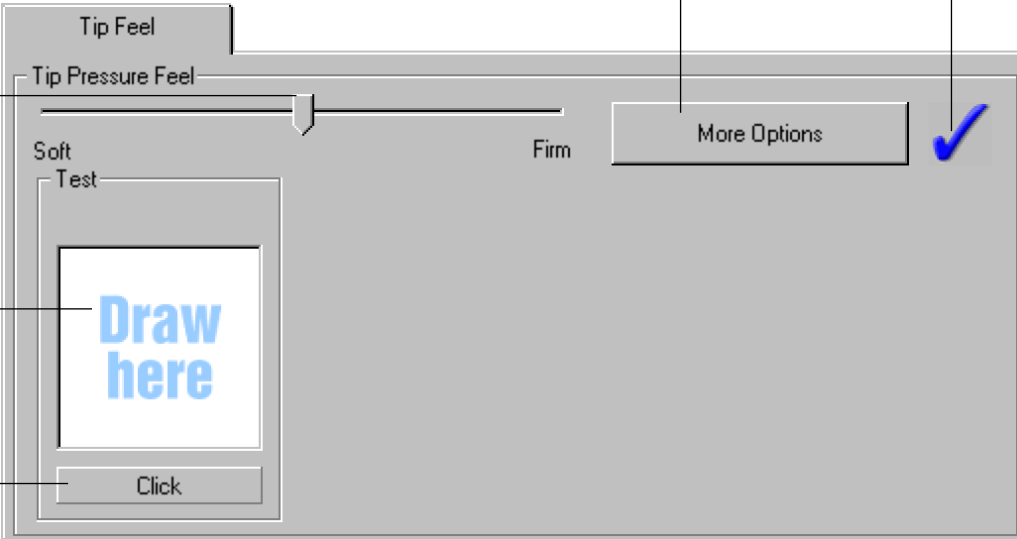
A checkmark appears when advanced settings are in effect.

Toggles to the [advanced options](#) display.

Drag the slider to a softer or firmer setting.

Make several pen strokes to test the current pressure-sensitivity setting.

Click here with your pen tip to test the current click pressure setting.



Note: For all screen shots of tabs, the [tab buttons](#) are omitted in order to save space.

ADJUSTING DOUBLE-CLICK

Double-clicking with the pen tip can be made easier by expanding the tap area that accepts a double-click (the double-click distance) and reducing the speed required to perform a double-click. This can be set in the DOUBLE-CLICK tab. Because a large double-click distance may adversely affect your brushstrokes in some drawing applications, Wacom recommends setting a small double-click distance and using the upper side switch to double-click.

Use custom double-click settings when checked.

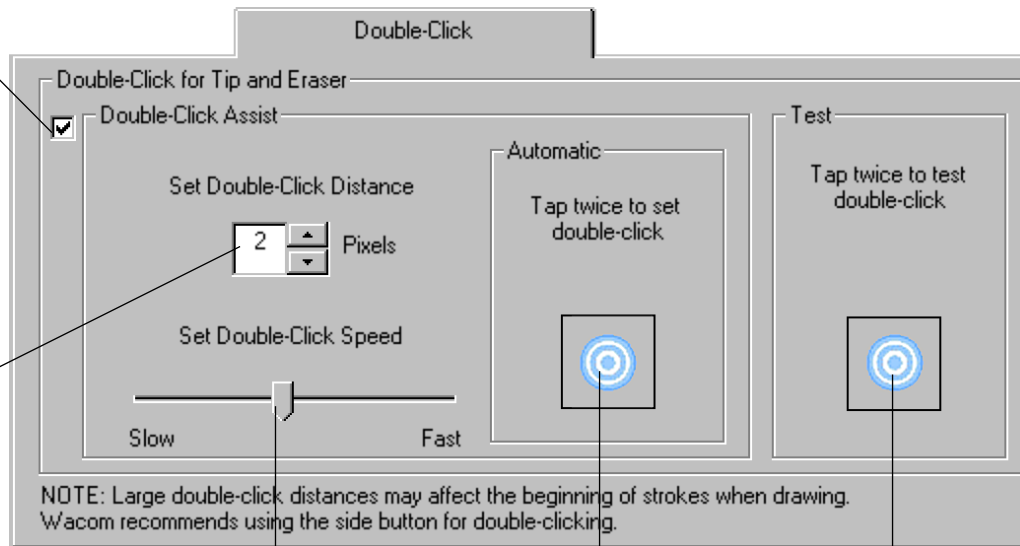
Note: DOUBLE-CLICK ASSIST can be enabled for some applications and disabled for others. See [Working with Application-Specific Settings](#) for more information.

Enter a number from 1 to 25 pixels or click the up and down arrows to increase or decrease double-click distance.

Drag the slider to change the double-click speed. A slower speed makes double-clicking easier.

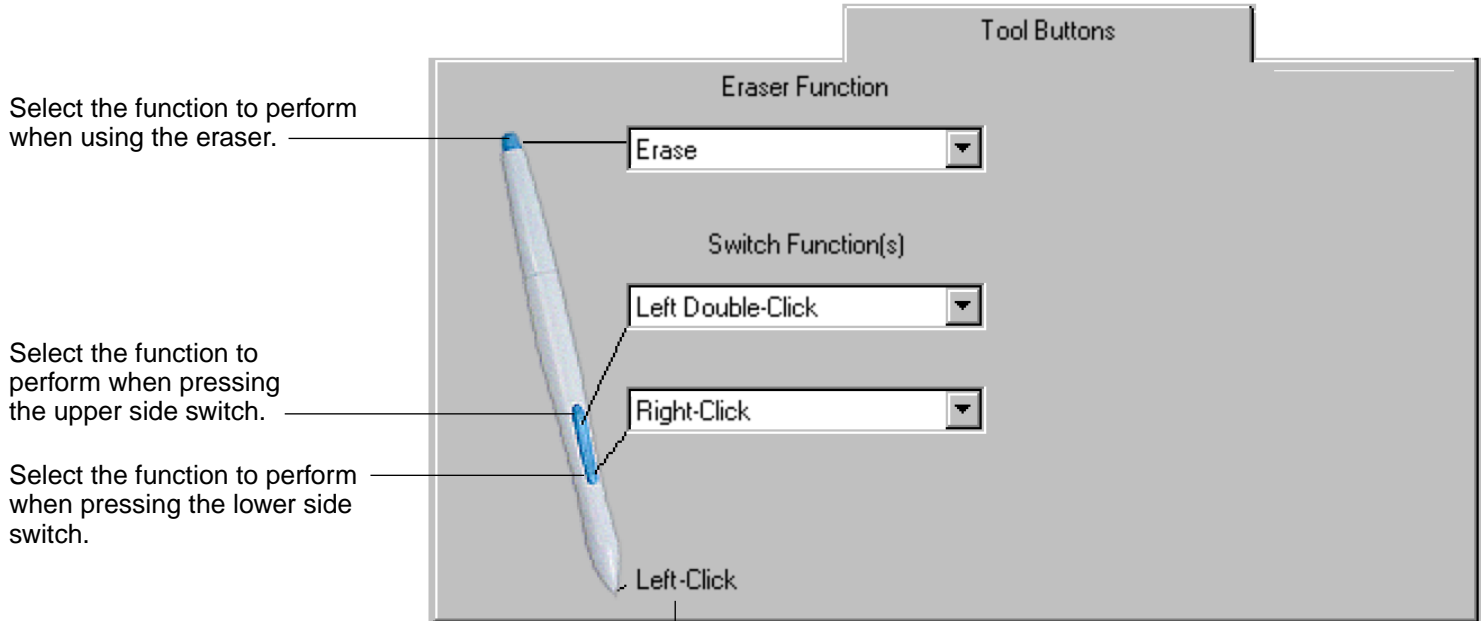
Double-click on the target to test your settings before applying them.

Tap twice on this icon with your pen tip to automatically set double-click distance and speed based on the way you normally double-click.



CUSTOMIZING TOOL BUTTONS

Select the **TOOL BUTTONS** tab to change the functions assigned to the eraser, side switch, and tip of your Graphire Pen. For each tool button, a pull-down menu enables you to choose the function that will be performed.



Click here to change the function assigned to the pen tip. The tip must be set to left click in order to draw in most graphics applications.



Contents



Index



Button Functions

Each button has a pull-down menu that allows you to choose the function that will be performed when the button is pressed. The following list describes all available functions. However, some options are not available for all buttons.

- **LEFT-CLICK.** Default setting for the Graphire Pen tip. This option simulates a left mouse button click. Be sure at least one button performs this function so you can always navigate and click.
- **LEFT DOUBLE-CLICK.** Default setting for the upper position of the side switch. When this option is selected, pressing the switch simulates a left mouse button double-click. For easier double-clicking, use this function instead of tapping twice with your pen.
- **RIGHT-CLICK.** Default setting for the lower position of the side switch. This simulates a right mouse button click.
- **MIDDLE-CLICK.** Simulates a middle mouse button click.
- **LEFT CLICK-LOCK.** Simulates holding down the left mouse button. Press the tool button once to initiate click lock. Press the button again to release click lock. Click lock is useful for dragging objects or selecting blocks of text.



Contents



Index

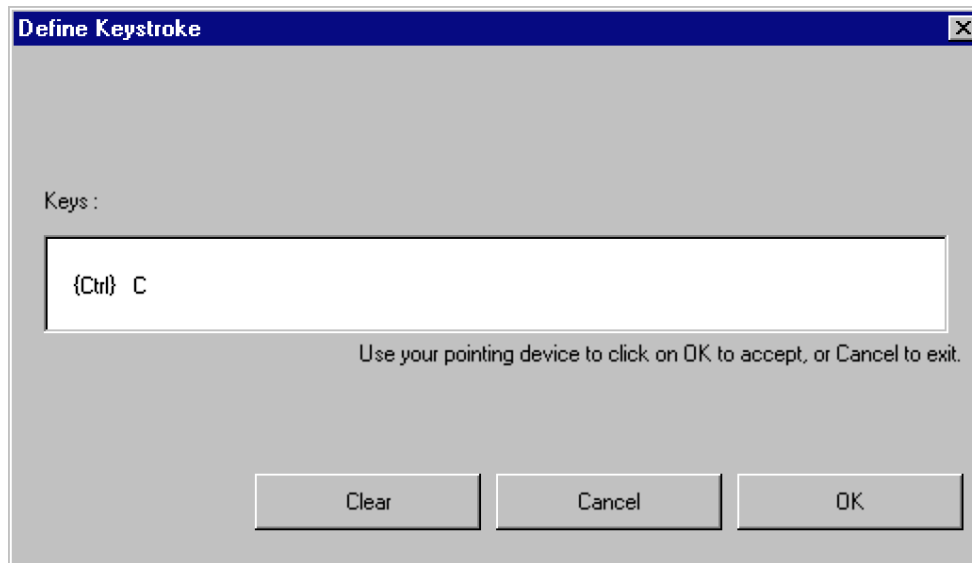


CUSTOMIZING

Page 51

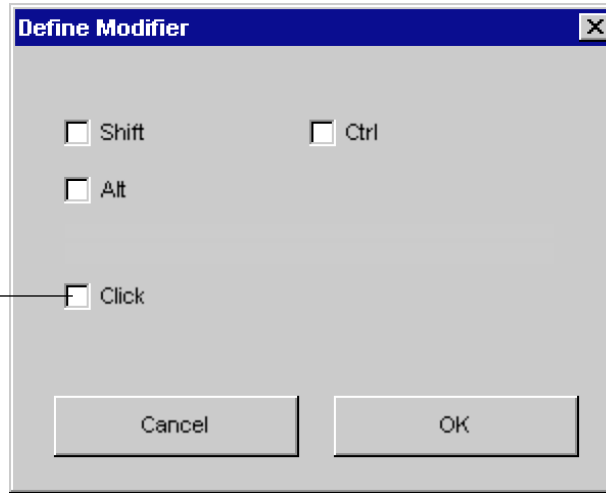
- **KEYSTROKE....** Enables you to simulate a series of keystrokes. When you select this option, the DEFINE KEYSTROKE dialog box appears. There, you can enter a keystroke or keystroke sequence to play back. Keystroke combinations can include letters, numbers, function keys (such as F3) and modifier keys (such as SHIFT, ALT, or CTRL). After defining a keystroke sequence, click OK.

Important: Because the ENTER key can be selected as a defined keystroke, it cannot be used to select OK. You must use your tool to click on the OK button.



- **MODIFIER....** Enables you to simulate modifier key(s) (such as SHIFT, ALT, or CTRL). Many applications use modifier keys to constrain the size or placement of objects. If you select this option, the DEFINE MODIFIER dialog box appears. There, you select the modifier key(s) to simulate.

You can select the CLICK box plus one or more modifier key options to define the function you want your tool button to simulate.



- **PRESSURE HOLD.** (Graphire Pen only.) Sets a button so that, when pressed, the pressure is locked at the current pressure level until the button is released. For example, you can paint with pressure-sensitivity until you reach the brush size that you like. You can then press the button and continue painting with the same size brush until the button is released.
- **MODE TOGGLE.** Toggles between [Pen Mode](#) and [Mouse Mode](#).
- **POP-UP MENU.** Displays a Pop-up Menu on your screen. See [Customizing the Pop-up Menu](#) for more information.
- **ERASE.** Default setting for the eraser. Refer to [Erasing](#) for information on using the eraser.
- **IGNORED.** Disables the button function.
- **Application Defined.** (Graphire Cordless Mouse only.) Only the button number is reported to your application. Use this setting when using applications that have built-in support for tool buttons.



Contents

Index



CUSTOMIZING

Page 54

ADJUSTING ERASER FEEL

To adjust the sensitivity of your Graphire Pen eraser, select the ERASER FEEL tab. To erase with a broad stroke or to click with a light touch, use a soft eraser setting. For maximum control while erasing, use a firm eraser setting.

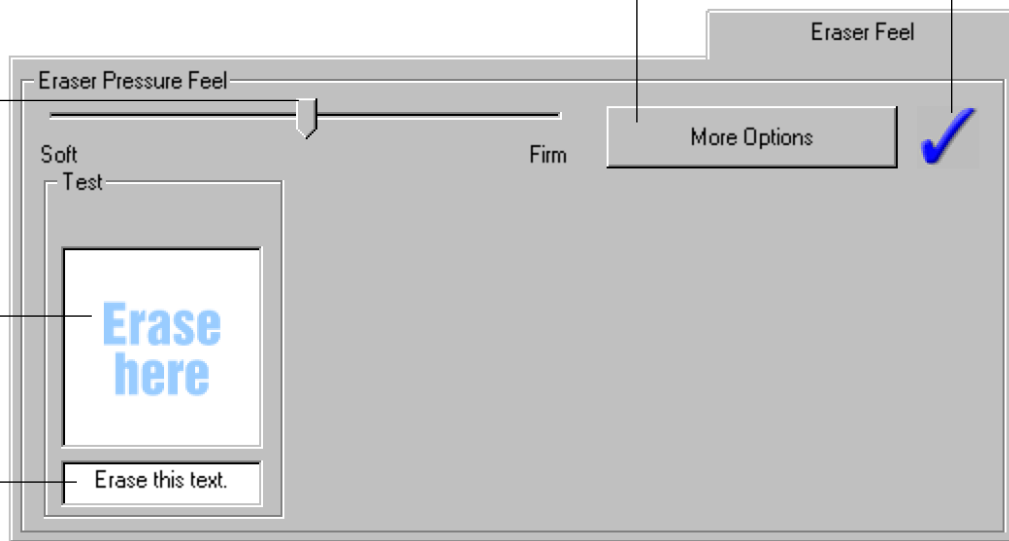
A checkmark appears when advanced settings are in effect.

Toggles to the [advanced options](#) display.

Drag the slider to a softer or firmer setting.

Using your eraser, test the current eraser pressure-sensitivity setting by erasing here.

Erase this text. Using your eraser, select text to test the current eraser click pressure setting.



TABLET TO SCREEN MAPPING

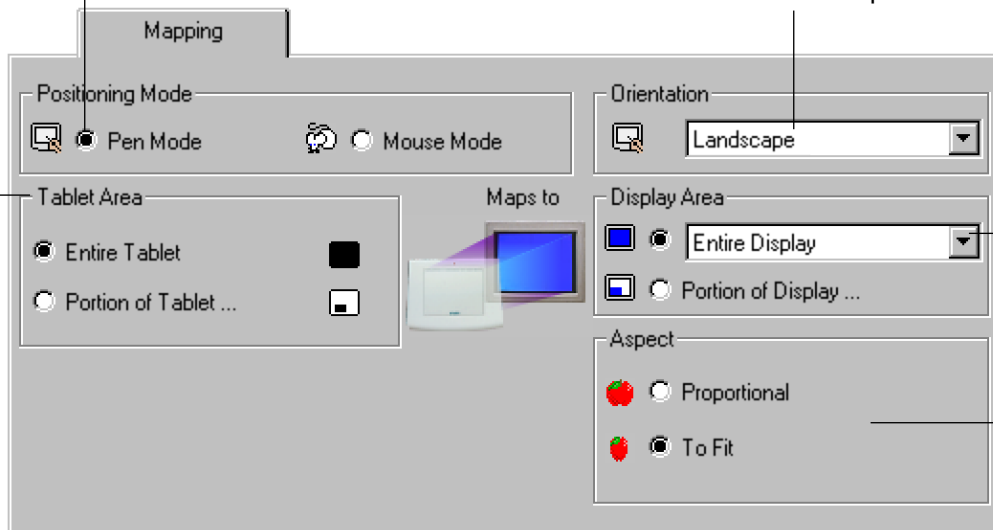
To change the relationship between tool movement on your tablet and cursor movement on the screen, select the MAPPING tab. The default POSITIONING MODE for the Graphire Pen is PEN MODE, which means that each point on the tablet maps to a corresponding point on the screen. (The default setting for the Graphire Cordless Mouse is MOUSE MODE.) In PEN MODE, the MAPPING tab looks like this:

Positioning Mode. In **Pen Mode**, the screen cursor moves with absolute positioning.

Select the **Orientation** of your tablet.

Note: Except for tablet orientation, the mapping settings for the Graphire Pen and Cordless Mouse are independent of one another.

Select the **Tablet Area** for drawing.



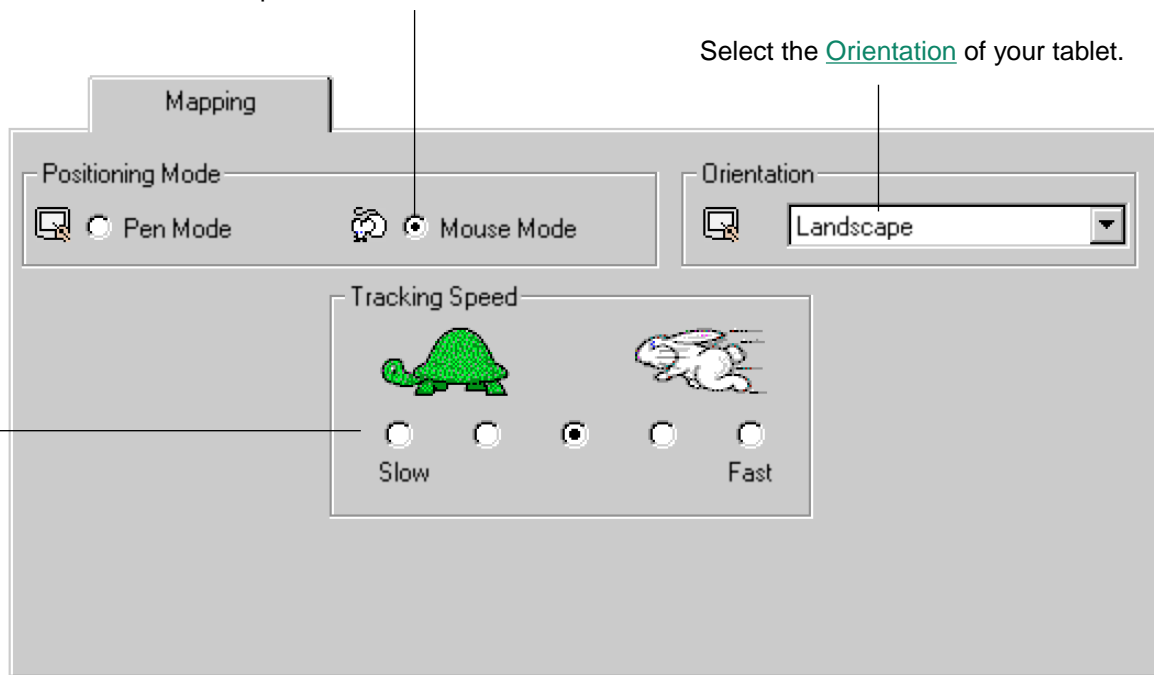
Display Area. Select a monitor area for tablet to screen mapping.

Aspect. Select a tablet to screen mapping relationship.



With MOUSE MODE selected, the MAPPING tab looks like this:

Positioning Mode. In **Mouse Mode**, the screen cursor moves with relative positioning. This is the default mode for the Graphire Cordless Mouse.



Select a slower or faster screen cursor speed when in Mouse Mode.



Positioning Mode

The POSITIONING MODE controls how the screen cursor moves.

- In PEN MODE, wherever you place a Graphire tool on the tablet, the cursor jumps to the corresponding point on the screen. This is required for tracing.
- In MOUSE MODE, the screen cursor is positioned like a mouse, requiring a “pick up and roll” action to move the cursor on the screen.

By default, your Graphire Pen is set to PEN MODE for drawing, and your Graphire Cordless Mouse is set to MOUSE MODE for navigation.

Note: You can also switch between PEN MODE and MOUSE MODE by using the screen Pop-up Menu. See [Customizing the Pop-up Menu](#) for more information.



Contents

Index



CUSTOMIZING

Page 58

Orientation

If you are working with a tall monitor or prefer to work with the tablet in a different position, you can rotate the tablet to one of the following orientations:

- **LANDSCAPE.** Tablet orientation is horizontal, with the tablet cable at the top. This is the default setting.
- **PORTRAIT.** Rotate the tablet 90 degrees clockwise from landscape orientation. The tablet orientation will be vertical, with the tablet cable on the right side.
- **LANDSCAPE FLIPPED.** Rotate the tablet 180 degrees from landscape orientation. The tablet will be upside down, with the tablet cable near the bottom.
- **PORTRAIT FLIPPED.** Rotate the tablet 90 degrees counter-clockwise from landscape orientation. The tablet orientation will be vertical with the tablet cable on the left side.

After making changes, verify you have the correct setting for your tablet orientation. Do this by moving your tool “up” on the tablet—the cursor should move up as well.

Note: The orientation you select applies to all tools and applications.



Contents

Index



CUSTOMIZING

Page 59

Aspect

Aspect defines the constraints of the tablet to screen relationship. ASPECT options include:



- **PROPORTIONAL.** Maintains correct vertical and horizontal proportions between the tablet and display. A traced image appears proportionally correct on your display, but may be smaller or larger than the original image.



- **TO FIT.** Correct scale or proportions are not maintained. The selected tablet area is mapped to the selected display area. A traced image may appear stretched, and may be smaller or larger than the original image. This is the default setting for all tools.



Tablet Area

These settings allow you to define the tablet area that will be mapped to the display area.

Uses the entire active area of the tablet for tablet to display mapping. This is the default setting.

Displays the PORTION OF TABLET dialog box where you can select a portion of the tablet's active area for tablet to display mapping.



Enter coordinates to select the tablet area.

- Select UNITS of measure for the displayed values. A count equals one line of tablet resolution.
- Enter values for the TOP, LEFT, BOTTOM, and RIGHT boundary of the tablet area. Values are measured from the top left corner of the tablet's active area.

Drag corners of the foreground graphic to select the tablet area. The background graphic represents the entire active tablet area. Values in the ENTER COORDINATES text boxes change accordingly.

Use your tool on the tablet to select the tablet area.

- Select the CLICK TO DEFINE TABLET AREA button.
- Follow the MESSAGE prompts to set the portion of your tablet that will be used for mapping.

Portion of Tablet

Choose one of the following three ways to define Portion of Tablet:

1. Enter Coordinates

Top Units

Left Bottom

Right

2. Drag Handles

Position Rectangle for Tablet

3. Select Area with Tool

Message:

Note: As you define PORTION OF TABLET, be sure to review the MESSAGE prompts that may appear.



Display Area

The DISPLAY AREA options allow you to define which portion of the display screen your tablet will map to.

- **ENTIRE DISPLAY.** Select this option to access the entire display. This is the default setting. If more than one monitor is in use, a pull-down menu is displayed with options for selecting ALL MONITORS or individual monitors.
- **PORTION OF DISPLAY....** This option allows you to select a portion of the display for tablet to screen mapping. Selecting PORTION OF DISPLAY... brings up the PORTION OF DISPLAY dialog box.

Enter coordinates to select the screen area.

- Select UNITS of measure for the displayed values.
- Enter values for the TOP, LEFT, BOTTOM, and RIGHT boundary of the display screen area. Values are measured from the top left corner of the display.

Drag corners of the foreground graphic to select the screen area. The background graphic represents the entire screen area. Values in the ENTER COORDINATES text boxes will change accordingly.

Move the screen cursor to select the screen area.

- Select the CLICK TO DEFINE SCREEN AREA button.
- Follow the MESSAGE prompts to set the portion of your display screen that will be used for mapping.

Portion of Display

Choose one of the following three ways to define Portion of Screen:

1. Enter Coordinates

Top 0 Units Pixel

Left 0 Bottom 768 Right 1024

2. Drag Handles

Position Rectangle For Screen

3. Select Area with Screen Cursor

Click to define screen area

Message:

Help... Cancel OK

Note: As you define PORTION OF DISPLAY, be sure to review the MESSAGE prompts that may appear.

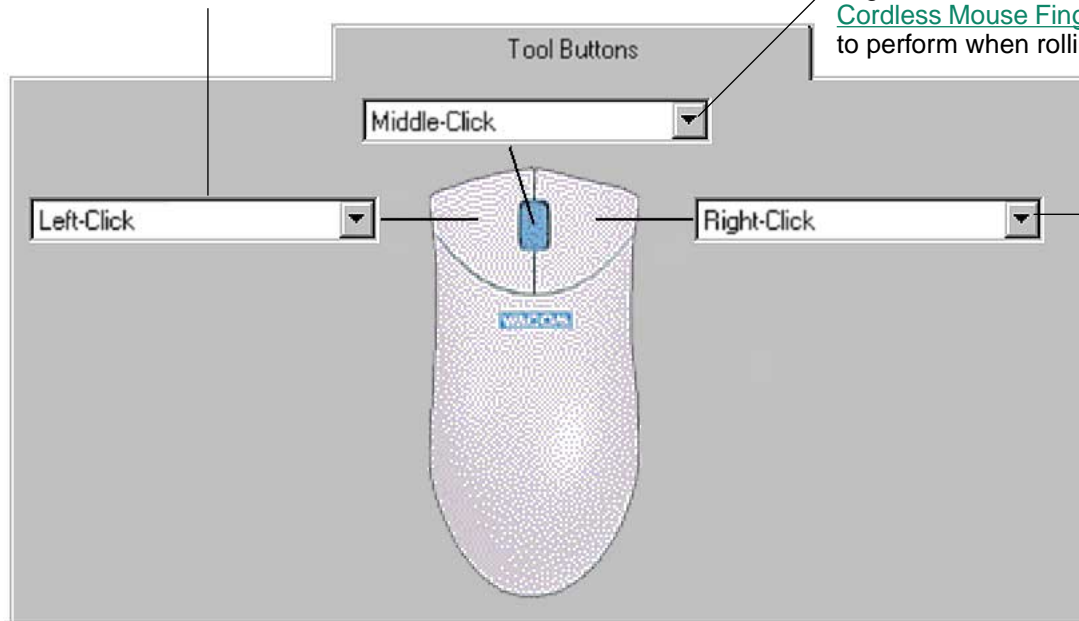


CUSTOMIZING THE GRAPHIRE CORDLESS MOUSE

To modify your Graphire Cordless Mouse button settings, select the TOOL BUTTONS tab.

Select the function to perform when pressing the left button.

Select the function to perform when clicking the fingerwheel button. Refer to [Customizing the Cordless Mouse Fingerwheel](#) to select the function to perform when rolling the fingerwheel.



Select the function to perform when pressing the right button.

As with the Graphire Pen, you can select a function to perform for each button from the button pull-down menus. Refer to [Button Functions](#) for a description of the available options.

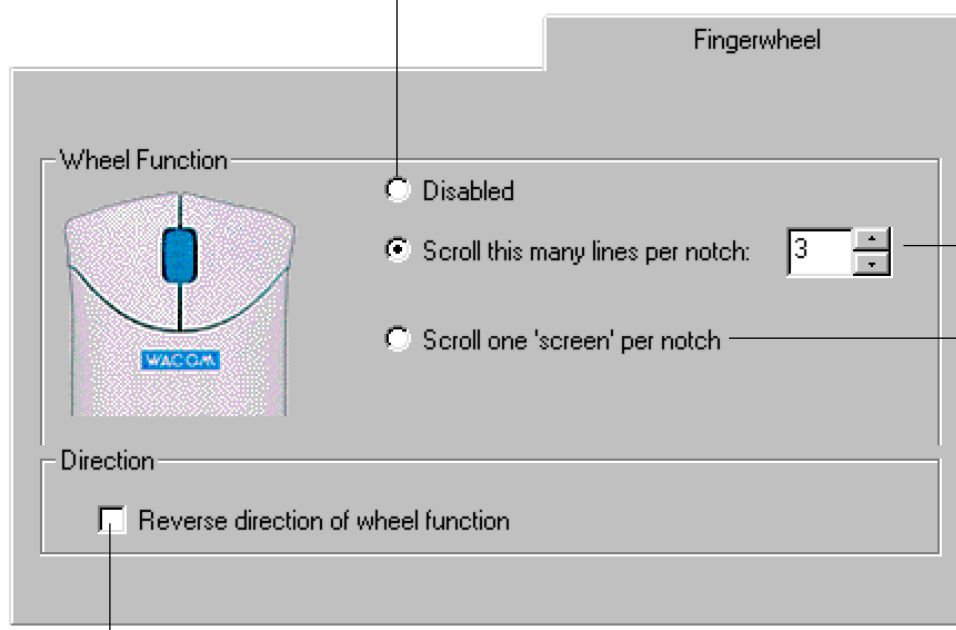
The Graphire Cordless Mouse buttons are chordable; you can press two or more buttons simultaneously and the functions will occur. For example, if you program one button to simulate the SHIFT key and another to simulate a click function, when you press both buttons a SHIFT+CLICK is simulated.



CUSTOMIZING THE CORDLESS MOUSE FINGERWHEEL

The Graphire Cordless Mouse fingerwheel controls scrolling in most active windows. For line scrolling, the fingerwheel emulates the Microsoft IntelliMouse wheel to control scrolling in applications that support the IntelliMouse. To customize your Graphire Cordless Mouse fingerwheel, choose the FINGERWHEEL tab.

Disables the fingerwheel function.



Wheel Function

Disabled

Scroll this many lines per notch: 3

Scroll one 'screen' per notch

Direction

Reverse direction of wheel function

Sets the fingerwheel to scroll the selected number of lines for each notch of fingerwheel movement. Enter a value (1 to 15) to set the amount of movement. Roll the fingerwheel forward to scroll up, and back to scroll down.

Sets the fingerwheel to scroll one page for each notch of fingerwheel movement.

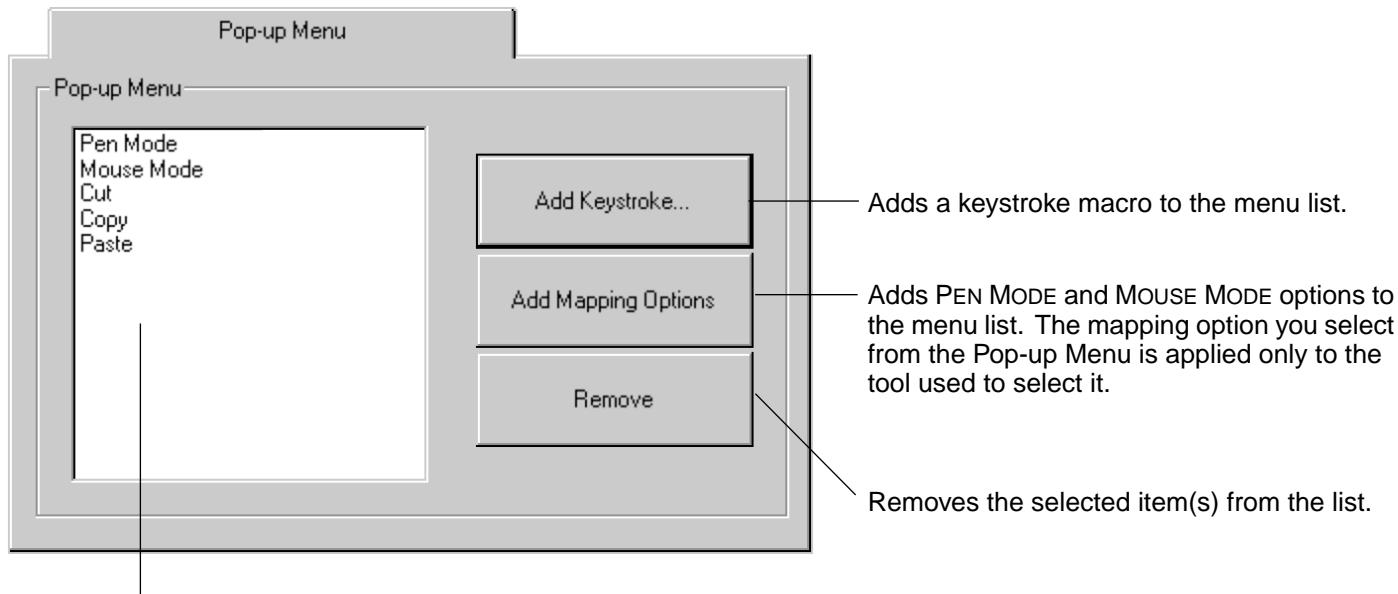
When checked, the functions assigned for the forward and backward direction of the fingerwheel are exchanged.



CUSTOMIZING THE POP-UP MENU

Select the POP-UP MENU tab to customize the available functions on the Pop-up Menu list. The Pop-up Menu list may include keystroke functions and mapping options.

To display the Pop-up Menu, set one of your tool buttons to the POP-UP MENU function. Whenever you push that button, the Pop-up Menu is displayed. Select items in the Pop-up Menu by clicking on them.



Displays a list of functions that will appear in the Pop-up Menu. To change the order of an item, drag it to a new location (mapping options are moved as a group).



ADD KEYSTROKES

To add a keystroke definition to the Pop-up Menu, click on the ADD KEYSTROKE... button. A dialog box will appear where you can specify and name the keystroke function. You can also create different keystroke functions for different applications. See [Working with Application-Specific Settings](#) for more information.

ADD MAPPING OPTIONS

When you click on the ADD MAPPING OPTIONS button, the following mapping options can be added to the Pop-up Menu list: [Pen Mode](#) and [Mouse Mode](#).

REMOVING KEYSTROKES AND MAPPING OPTIONS

To remove mapping option(s) or keystroke function(s) from the Pop-up Menu list, select the function(s) you wish to remove and click the REMOVE button. Mapping options must be added or removed as a single item. Multiple items may be selected for removal by pressing the SHIFT key and clicking on them.



Contents

Index



CUSTOMIZING

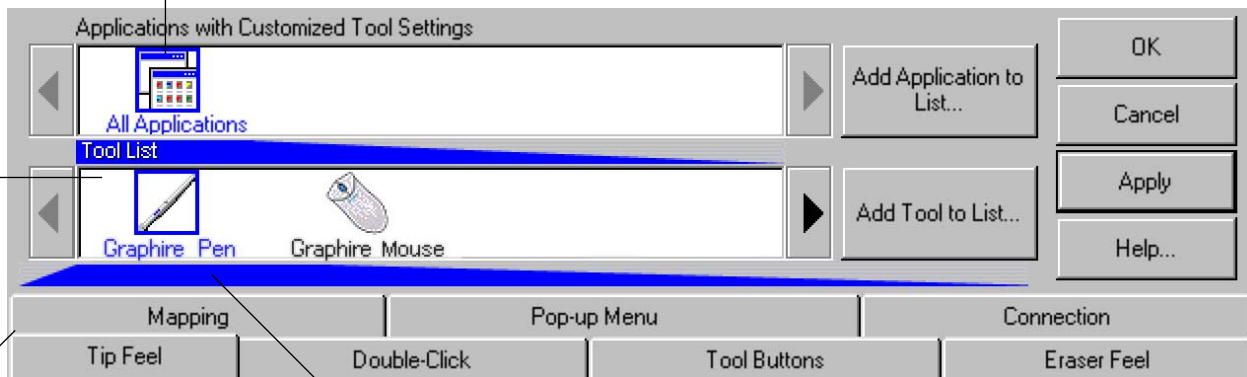
Page 67

WORKING WITH GRAPHIRE TOOLS

The Wacom control panel is designed to help you customize and keep track of your Graphire tool settings. The tool you use to open the control panel is automatically selected, and the appropriate tabs for that tool are displayed.

If application-specific settings have not been added, the ALL APPLICATIONS icon is displayed and the tool settings apply for all applications.

The TOOL LIST displays icons for tools that are customized for the above selected application.



Tab settings apply only to the selected tool and application.

Your current selections are highlighted. Wedges emphasize the relationship between tab settings and the selected tool and application.



ADDING A TOOL

When you place a Graphire Pen or Cordless Mouse on the tablet, it is automatically added to the control panel's TOOL LIST and will function with its default settings. You can customize a tool by opening the Wacom control panel and changing the tab settings. When you select a tool from the Tool List, the appropriate tab settings for that tool are displayed. Any changes you make to the tab settings will then apply to that tool when you click on the control panel's APPLY or OK button.



Contents

Index



CUSTOMIZING

Page 69

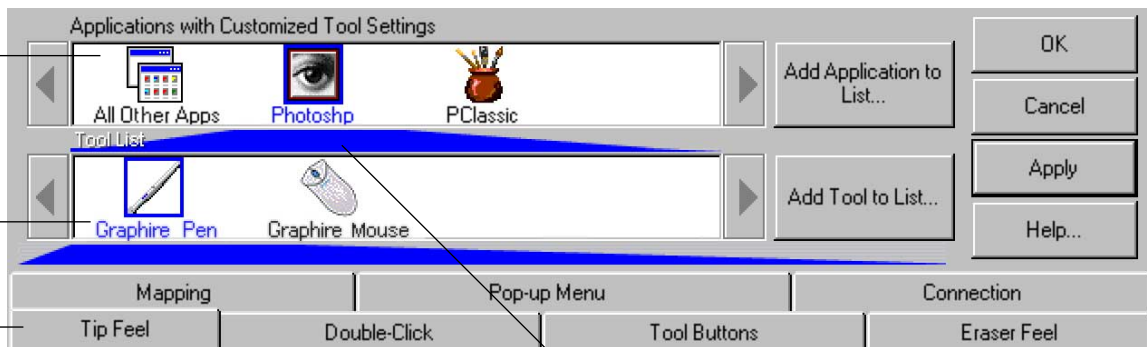
WORKING WITH APPLICATION-SPECIFIC SETTINGS

You may wish to have different tool settings for a particular application. The APPLICATION LIST lets you customize your Graphire tablet and tool settings for individual applications.

The APPLICATION LIST displays icons for applications with customized settings.

The TOOL LIST displays icons for tools that are customized for the above selected application.

Tab settings apply only to the selected tool and application.



Your current selections are highlighted. Wedges emphasize the relationship between tab settings and the selected tool and application.



If application-specific settings have not been created, a single icon labeled ALL APPLICATIONS is displayed in the APPLICATION LIST, and the tool settings displayed in the tabs are applied to all applications.

When a second application is added to the APPLICATION LIST, the ALL APPLICATIONS icon changes to ALL OTHER APPS, and a new icon is displayed for the new application settings.

If you select the ALL OTHER APPS icon and make changes to the tab settings, your changes will apply to all applications except the specific one(s) you have added to the list. If you select the icon for a specific application and make changes to the tab settings, your changes will apply to only that application.

When ALL APPLICATIONS or ALL OTHER APPS is selected in the APPLICATION LIST, the TOOL LIST displays icons for the Graphire Pen and Cordless Mouse. When an icon for a specific application is selected from the APPLICATION LIST, the TOOL LIST only displays the Graphire tools that you have added for the selected application. When you create an application-specific setting, you are, in a sense, creating a separate TOOL LIST for the application.



Contents

Index



CUSTOMIZING

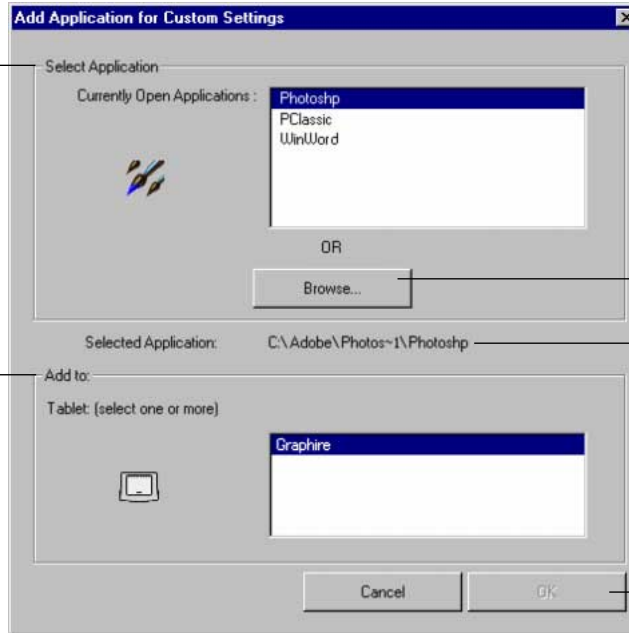
Page 71

CREATING AN APPLICATION-SPECIFIC SETTING

To create an application-specific setting, click on the ADD APPLICATION TO LIST... button or select APPLICATIONS FOR CUSTOM SETTINGS... from the ADD pull-down menu. The ADD APPLICATION FOR CUSTOM SETTINGS dialog box appears.

Select an application to add to the APPLICATION LIST. Only applications that are currently running and that have not previously been added to the APPLICATION LIST are displayed.

If you have more than one tablet, select the tablet(s) for which to add application-specific settings.



BROWSE to select the executable file of any application installed on your computer.

Note: If two programs have the same file name, they will share the same customized settings.

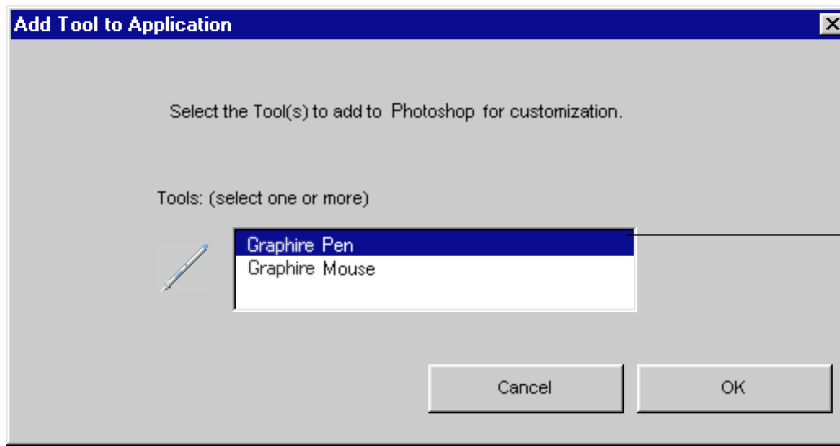
Displays the name of the selected application.

Click OK to continue.

Note: First customize settings for one application. When you feel comfortable with using application-specific settings, you can create more application-specific settings.



If you have used both the Graphire Pen and Cordless Mouse on the tablet, the ADD TOOL TO APPLICATION dialog box is displayed. Choose one or both tools to add to the TOOL LIST for this application. By default, the tool in your hand is selected. Click OK to confirm your selection.



Lists the tools that can be customized.

Note: If a tool is not selected it will continue to work with the settings specified for ALL OTHER APPS.

After you have added an application, its icon appears in the APPLICATION LIST. When you select the application icon, the TOOL LIST displays only the tool(s) that have application-specific settings for the application. If a tool does not appear in the TOOL LIST for the application, it will use the settings for ALL OTHER APPS. In the TOOL LIST you can select a tool and then use the tabs to change the tool settings.



Contents

Index



CUSTOMIZING

Page 73

ADDING A TOOL TO AN APPLICATION'S TOOL LIST

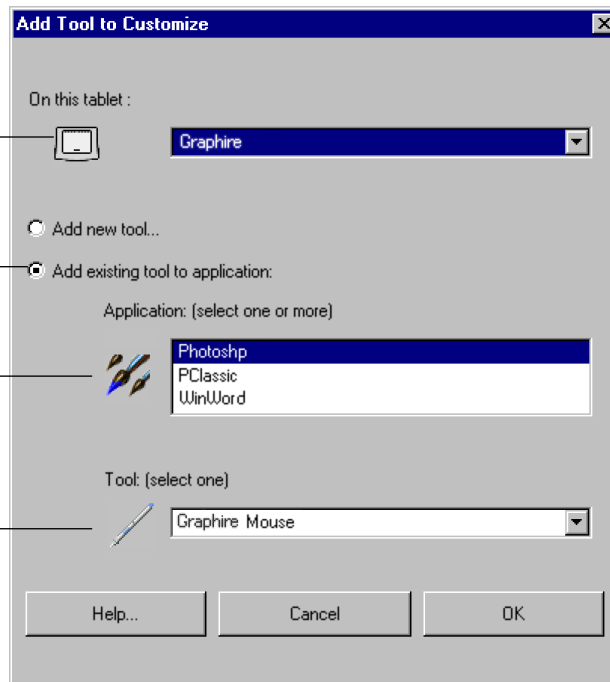
To add a tool to an application's TOOL LIST, click on the ADD TOOL TO LIST... button or select TOOL TO CUSTOMIZE... from the ADD pull-down menu. The ADD TOOL TO CUSTOMIZE dialog box appears. Choose the application and tool to create settings for. Click OK to confirm your selection. The dialog box will close, and the tool will appear in the TOOL LIST for the chosen application.

If you have more than one tablet, select the tablet(s) for which to add application-specific settings.

First select ADD EXISTING TOOL TO APPLICATION.

Choose an application. Only applications that have been added to the APPLICATION LIST are displayed.

Select a tool. The tool that has not been added to the TOOL LIST for the selected application is automatically displayed.



CHANGING SETTINGS FOR A SPECIFIC APPLICATION AND TOOL

To change settings for a specific application and tool combination, from the APPLICATION LIST choose the application you want to change tool settings for. From the TOOL LIST, choose the tool you want to customize. Change the tab settings for the selected application and tool combination.

REMOVING APPLICATION-SPECIFIC SETTINGS

To remove application-specific settings:

1. Open the REMOVE menu and select CUSTOM SETTINGS FOR APPLICATION....
2. In the REMOVE CUSTOM SETTINGS FOR APPLICATION dialog box, select the application(s) for which you want to remove the custom settings and click OK.

To remove application-specific settings for a tool:

1. Select CUSTOMIZED TOOL... from the REMOVE pull-down menu.
2. In the REMOVE CUSTOMIZED TOOL dialog box, select the tool to remove. Then click on the REMOVE FROM SELECTED TABLETS AND APPLICATIONS radio button and select the application that you want to remove the tool from.
3. Click OK to confirm your selections.

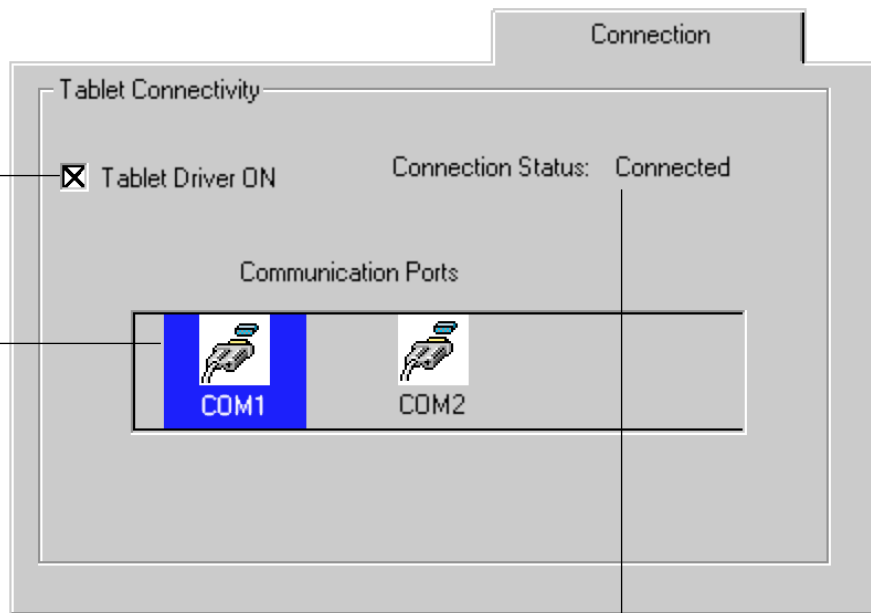


CHECKING YOUR SERIAL TABLET CONNECTION

Select the CONNECTION tab to check the status of your tablet connection to the serial port.

When checked, the tablet driver is on.

Displays all serial ports. The port in use by the tablet is selected. Ports used by other devices are dimmed.



Displays messages about your selected serial port.

- **CONNECTED.** The tablet is connected and responding correctly.
- **NOT RESPONDING.** There is no communication between the tablet and the computer.
- **OVERRIDDEN.** Another application has taken over control of the serial port.
- **DRIVER OFF.** The Graphire driver is turned off.



PULL-DOWN MENUS

Use the pull-down menus to access additional custom settings options, a language selection menu, and online documentation. Help is available for most dialog boxes that appear when you make a menu selection—just click on the dialog box HELP... button for detailed information on settings and options.



FILE

The File menu contains the following options:

- **SUMMARY....** Provides a summary of your current settings.
- **EXIT.** Exits the control panel.

EDIT

The EDIT menu contains the following options:

- **COPY SETTINGS TO....** Opens a dialog box where you can copy your customized settings to another tool or application. You can also access this dialog box by clicking on the COPY SETTINGS TO... tab button.
- **RESET SETTINGS....** Opens a dialog box where you can reset your customized settings to their factory default values.
- **RENAME TOOL....** Opens a dialog box where you can assign custom names to your tools.
- **PREFERENCES....** Opens a dialog box where you can change general Graphire operating preferences.



ADD

The ADD menu contains the following options:

- **TABLET....** Opens a dialog box where you can add one or more tablets. Refer to [Installing Multiple Tablets](#) for information on adding multiple tablets.
- **APPLICATION FOR CUSTOM SETTINGS....** Opens a dialog box where you can add an application to the APPLICATION LIST. This is also accessed by clicking on the ADD APPLICATION TO LIST... button. Refer to [Working with Application-Specific Settings](#) for more information.
- **TOOL TO CUSTOMIZE....** Opens a dialog box where you can add a tool to the control panel TOOL LIST. This is also accessed by clicking on the ADD TOOL TO LIST... button. Refer to [Adding a Tool](#) for more information.

REMOVE

The REMOVE menu contains the following options:

- **TABLET....** Opens a dialog box where you can remove one or more tablets from the control panel driver.
- **CUSTOM SETTINGS FOR APPLICATION....** Opens a dialog box where you can remove custom tool settings from an application.
- **CUSTOMIZED TOOL....** Opens a dialog box where you can remove customized tools.

Note: If only one item is available for a particular REMOVE menu option, the option will be dimmed. For example, if you have only one tool the CUSTOMIZED TOOL... option will be dimmed.



Contents

Index



CUSTOMIZING

Page 78

LANGUAGE

The LANGUAGE menu allows you to switch between English and other installed languages. Typically, the language of the operating system is installed when you install the driver, but other languages can be specified during a custom install.

HELP

The HELP menu contains the following options:

- **HELP....** Displays online Help.
- **USER'S MANUAL....** Displays the *Graphire User's Manual for Windows*.
- **GETTING STARTED....** Displays an overview of the control panel.
- **DIAGNOSTICS....** Displays diagnostics information for your Graphire tablet and tools.
- **ABOUT....** Displays information about the control panel and driver.



Contents

Index



CUSTOMIZING

Page 79

ADVANCED FEATURES

You can use advanced features to further customize your Graphire pen and mouse set for the way you like to work.

[ADVANCED TIP PRESSURE SETTINGS](#)

[ADVANCED ERASER PRESSURE SETTINGS](#)

[COPYING SETTINGS](#)



Contents

Index

ADVANCED TIP PRESSURE SETTINGS

To customize advanced tip pressure settings, from the TIP FEEL tab select MORE OPTIONS. The advanced options enable you to change the click pressure and pressure curve settings independently. (In the basic options display, these settings are adjusted simultaneously with the TIP PRESSURE FEEL slider.)

Important: The TIP PRESSURE FEEL slider overrides the advanced pressure settings. If you customize advanced settings, then drag the TIP PRESSURE FEEL slider, your advanced settings will be removed.

Use these controls to manually change the pressure curve shape.

The screenshot shows the 'Tip Pressure Feel' settings dialog. At the top, there is a 'Tip Pressure Feel' slider ranging from 'Soft' to 'Firm'. Below the slider is a 'Fewer Options' button with a blue checkmark. The main area is divided into three sections: 'Manual', 'Automatic', and 'Test'. The 'Manual' section contains a 'Click Force' control set to 6 and a graph showing the relationship between 'Tip Force' (0% to 100%) and 'Reported Pressure' (0% to 100%). The 'Automatic' section has a 'Draw Strokes to Set Maximum Force' area with a grid and a 'Start Over' button. The 'Test' section has a 'Draw here' area and a 'Click' button. Annotations with arrows point to various elements: 'Use these controls to manually change the pressure curve shape.' points to the graph; 'Toggles to the basic options display.' points to the 'Fewer Options' button; 'After you set advanced settings, a checkmark appears.' points to the blue checkmark; 'Use this area to automatically set the maximum amount of force to use when drawing.' points to the grid area; and 'Test the results of your changes before you apply them.' points to the 'Draw here' area.

The pressure curve graphically displays the relationship between force applied to your tool and pressure reported to an application.

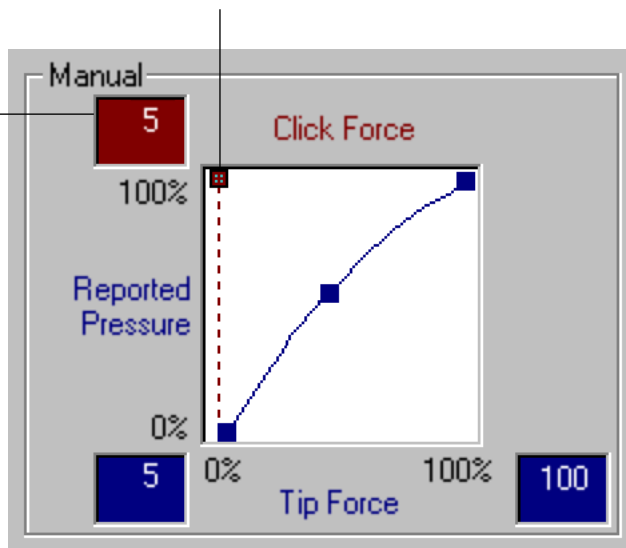


CLICK FORCE ADJUSTMENT

The click force setting adjusts the amount of force required to generate a button click.

The CLICK FORCE bar graphically displays the force level at which a click occurs.

Enter a value from 1 to 50% or drag the CLICK FORCE bar to set the force at which a click occurs.



Note: For optimal performance in graphics applications, set the click force and minimum tip force to the same value.

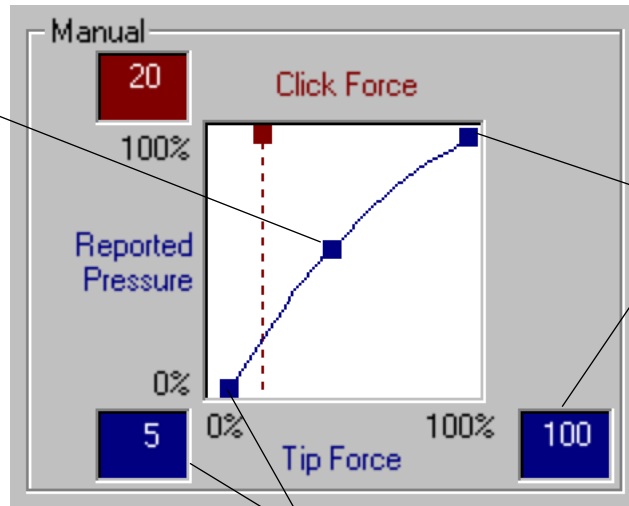


PRESSURE CURVE ADJUSTMENT

Changing the shape of the pressure curve will change the feel of the pen tip. A pressure curve that increases quickly makes the tip feel more sensitive to changes in force.

The control points at each end of the pressure curve set the minimum and maximum amount of force your pen will respond to. If you have a soft touch and want to achieve full pressure without having to apply full force to your pen, decrease the maximum force level. You can apply less force to your pen and still have the effects of full pressure. The default for maximum force is 100%.

To change curve shape, drag the control point to a new position.

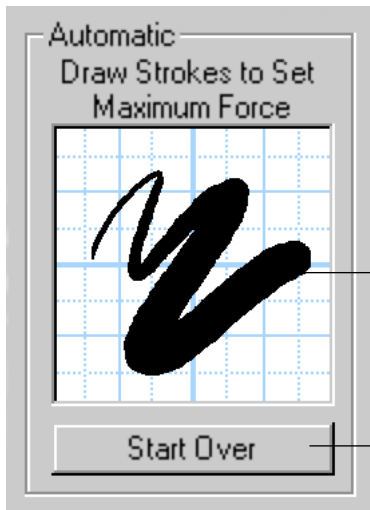


Enter a value from 20 to 100%, or drag the MAXIMUM TIP FORCE control to set the maximum force your pen tip will respond to.

Enter a value from 0 to 80%, or drag the MINIMUM TIP FORCE control to set the minimum force that will register pressure.



To automatically set the maximum force for the way you draw, click the **START OVER** button and draw in the scratch pad area. As you draw, the **MAXIMUM TIP FORCE** control moves, and the value in the edit box changes to reflect the peak pressure registered by your hand movements. To start over, click the **START OVER** button and begin a new drawing.



While applying normal pressure to the pen tip, draw several strokes here to automatically set the maximum force value.

Click here to reset maximum force value to the start value for this test.



 [Contents](#)
[Index](#)



ADVANCED FEATURES

Page 84

ADVANCED ERASER PRESSURE SETTINGS

To customize advanced eraser pressure settings, select the ERASER FEEL tab and click on the MORE OPTIONS button. You work with the advanced eraser settings in the same manner as with the [Advanced Tip Pressure Settings](#).

Important: The ERASER PRESSURE FEEL slider overrides the advanced pressure settings. If you customize advanced settings, then drag the ERASER PRESSURE FEEL slider, your advanced settings will be removed.



Contents

Index



ADVANCED FEATURES

Page 85

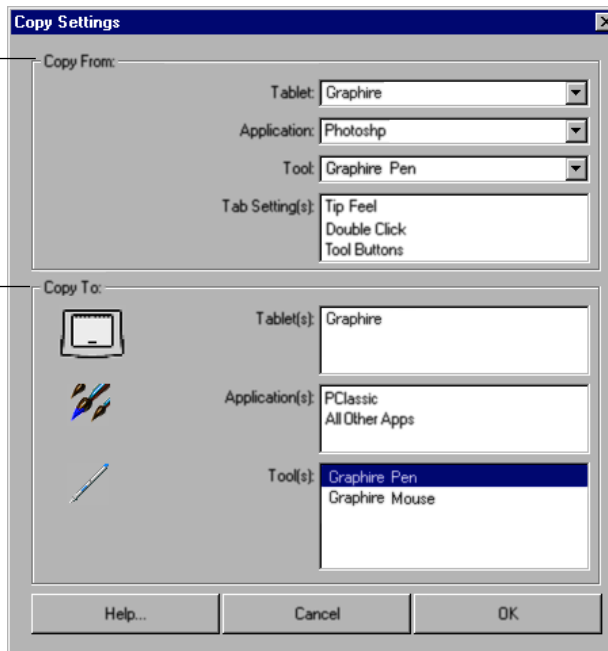
COPYING SETTINGS

To copy settings between tools or to another application, choose the COPY SETTINGS TO... option from the EDIT menu, or click on the COPY SETTINGS TO... button. A dialog box is displayed where you can copy settings from one tool to another within the same application or between different applications.

Note: If you copy settings between the Graphire Pen and Cordless Mouse, only those settings common to both tools (such as mapping settings) can be copied.

Choose from where settings will be copied.

Select where settings will be copied to.



HAVING TROUBLE?

Most of the time your tablet will work flawlessly. But if you are having trouble, Wacom recommends you do the following:

1. Refer to the troubleshooting procedures described in this chapter.
2. Look in the troubleshooting tables. Your problem may be described there and you can try the solution offered.
3. Open the Graphire Readme file for late-breaking information.
4. If you are having a compatibility conflict between Graphire and a new hardware or software product, it may be helpful to download a new Wacom tablet software driver. Wacom periodically updates the software driver to maintain compatibility with new products. See [Who to Call](#) for your region.
5. Check the FAQs (Frequently Asked Questions) on the Wacom web site for your region. See [Who to Call](#).
6. If you have tried the suggestions in this manual and still cannot resolve the problem, then contact Wacom for Technical Support.

[TROUBLESHOOTING](#)

[TROUBLESHOOTING TABLES](#)

[CONTACTING TECHNICAL SUPPORT](#)



Contents



Index

HAVING TROUBLE?

Page 87

TROUBLESHOOTING

If the Wacom Tablet driver failed to load properly, first perform the recommended action in the error message on your screen. If that does not solve the problem, perform the troubleshooting tests for your tablet or tool(s).

TESTING USB TABLETS

TESTING SERIAL TABLETS

TESTING YOUR GRAPHIRE TOOLS

TESTING USB TABLETS

Make sure your computer is turned on, the operating system has finished loading, and Graphire is properly connected to an active USB port. Then try the following tests:

1. **Check power to the tablet.** The tablet's orange status LED will light whenever Graphire is properly connected and your computer has registered it as a USB device. If the LED is on, continue with step 2. If the LED is off:
 - Make sure all USB cables are securely connected to an active USB port.
 - If you are connecting the tablet to a USB hub (or hub device such as a keyboard with USB ports), be sure the USB hub is properly connected to your computer and is active.
 - Connect Graphire into a different USB port or try connecting to the USB port on another computer.
 - If the tablet's status LED does not illuminate after your computer is on and has finished booting up, your USB port may be inactive. See [Verifying Your Computer is USB Ready](#).



Contents

Index



HAVING TROUBLE?

Page 88

2. **Check the pen.** Move your Graphire Pen across the active area of the tablet; the screen cursor should move in the corresponding direction on your monitor. Press the pen tip against the tablet surface. The status LED on the tablet should turn from orange to green. Now, without applying pressure to the pen tip, press the side switch. The status LED should again change from orange to green. Turn the pen over and press the eraser against the surface of the tablet; the status LED should change from orange to green. If not, you may have a defective pen or tablet. See [Contacting Technical Support](#).

Verifying Your Computer is USB Ready

Graphire USB tablets require Windows 98, Me, or 2000. Many PCs that shipped with Windows 95 have the USB port disabled in the BIOS. If you upgraded to Windows 98, Me, or 2000, verify that the USB ports are enabled in the BIOS and that all necessary system software has been installed. Refer to your system documentation or contact your system manufacturer for information on enabling USB support for your computer.

Run the USB Ready utility located on the Graphire Tablet CD to check if your system is USB ready.

If your system is not USB ready, correctly configure your USB port and install the necessary USB system software, then restart your computer. The NEW HARDWARE FOUND dialog should appear and you can continue with the Graphire installation.

Always be sure your tablet is plugged into an active USB hub.



Contents

Index



HAVING TROUBLE?

Page 89

TESTING SERIAL TABLETS

Make sure your Graphire tablet is properly connected and that power is on to both your computer and to the tablet.

1. **Check power to the tablet.** You should see the tablet's orange status LED whenever the tablet cables are properly connected and your computer is turned on. If the orange status LED does not come on, make sure that both the serial connector and the power splitter connector are properly connected to your computer. If the light still does not come on, you may have a defective tablet. See [Contacting Technical Support](#).
2. **Check the serial connection.** Open the Wacom control panel to the CONNECTION tab. It should indicate that the tablet is responding. If not, make sure that the tablet cable is properly connected to an active serial communication port.
3. **Check the pen.** Press the pen tip against the surface of the tablet. The status LED on the tablet should turn from orange to green. Now, without applying pressure to the pen tip, press the side switch. The status LED should again turn from orange to green. If not, you may have a defective pen or tablet. See [Contacting Technical Support](#).



[Contents](#)

[Index](#)



[HAVING TROUBLE?](#)

Page 90

TESTING YOUR GRAPHIRE TOOLS

From the Wacom control panel's HELP menu, select DIAGNOSTICS... to open the DIAGNOSTICS dialog box. The tablet driver version, tablet hardware and connection, and pointing device information is shown.

TESTING THE GRAPHIRE PEN

TESTING THE GRAPHIRE CORDLESS MOUSE

Testing the Graphire Pen

1. While observing the POINTING DEVICE INFO column, bring your Graphire tool within proximity of the tablet. A value for proximity, the device name, and device type should be displayed.
2. Move the pen along the tablet surface. The X and Y DATA values should change to reflect the tool position.
3. Test your Graphire Pen buttons. The tablet's status LED should change color from orange to green each time you click with the pen tip, press the side switch, or press the pen's eraser to the tablet.
 - Click on the tablet surface with the pen tip—the SWITCHES state and PRESSURE value should change. (PRESSURE should change from approximately 0% with no pressure applied to approximately 100% when full pressure is applied.)
 - Next, press the side switch without pressing the tip to the tablet—the SWITCHES state should change. (Do this for both positions of the DuoSwitch.)

Pen Tip = 1, DuoSwitch (lower position) = 2, DuoSwitch (upper position) = 3, Eraser = 1

 - Then press the pen's eraser to the tablet—the SWITCHES state and PRESSURE value will change. (PRESSURE should change from approximately 0% with no pressure applied to approximately 100% when full pressure is applied.)
4. When you are done, click on the CLOSE button to exit the dialog box.



Contents

Index



HAVING TROUBLE?

Page 91

Testing the Graphire Cordless Mouse

1. Test the buttons on your Graphire Cordless Mouse by clicking each button. The tablet's status LED should change color, and the SWITCHES state should change for each button you click.



Graphire Cordless Mouse

2. When the DIAGNOSTICS dialog box is first opened the WHEEL status should be 0. Move the fingerwheel backward. The WHEEL status should change from 0 to +1.
3. Move the fingerwheel forward. The WHEEL status should change to -1.
4. When you are done, click on the CLOSE button to exit the dialog box.



Contents

Index



HAVING TROUBLE?

Page 92

TROUBLESHOOTING TABLES

If you encounter problems with your Graphire tools or tablet, refer to the following tables. Your problem may be described here, and you can try the solution offered. Be sure you refer to the Readme file for the latest troubleshooting information.

[USB TABLET PROBLEMS](#)

[SERIAL TABLET PROBLEMS](#)

[GENERAL PROBLEMS](#)

[WINDOWS-SPECIFIC PROBLEMS](#)

USB TABLET PROBLEMS

The computer does not have an available USB port.

Check if there is an available USB port on a USB hub device. If none are available you will need to add a USB hub.

The tablet status LED is off.

Your computer must be USB ready (see [Verifying Your Computer is USB Ready](#)). Verify that your tablet's USB cable is properly connected to an active USB port. If you are connecting to a USB hub device, make sure the hub is connected to an active USB port and that the hub is active. Refer to [Testing USB Tablets](#) for instructions.



Contents



Index



HAVING TROUBLE?

Page 93

SERIAL TABLET PROBLEMS

The computer does not have an available serial port.	Remove an existing peripheral serial device and any associated device drivers for that hardware, or add an additional serial port. Then install Graphire.
The tablet power light is off.	Make sure your Graphire tablet is properly connected. Be sure your computer is off before disconnecting or connecting your tablet. Refer to Serial Tablet Installation for instructions. If the tablet's power light still does not turn on, you may have a defective tablet (see Contacting Technical Support).
The Graphire tool buttons do not work and the screen cursor will not move.	Open the Wacom control panel and go to the CONNECTION tab. Verify that TABLET DRIVER ON is checked. If not, use your mouse to select it. If you do not have a mouse attached to your computer, use the TAB key to select the checkbox and then press the spacebar to toggle the driver on.

GENERAL PROBLEMS

The Graphire Pen selects everything, will not stop drawing.	Open the Wacom control panel and go to the tool's TIP FEEL tab. Move the TIP PRESSURE FEEL slider toward FIRM, or select the MORE OPTIONS button and increase the CLICK FORCE setting.
The eraser selects everything or will not stop erasing.	Open the Wacom control panel and go to the ERASER FEEL tab. Move the ERASER PRESSURE FEEL slider toward FIRM, or select the MORE OPTIONS button and increase the CLICK FORCE setting.



Contents



Index



HAVING TROUBLE?

Page 94

You notice a screen delay at the beginning of pen strokes.

In the Wacom control panel, try decreasing the **DOUBLE-CLICK DISTANCE** or increasing the double-click speed (see [Adjusting Double-Click](#)). If that does not work, try unchecking the **DOUBLE-CLICK ASSIST** checkbox.

You have to press hard with the Graphire Pen when clicking or drawing.

Open the Wacom control panel and go to the tool's **TIP FEEL** tab. Move the **TIP PRESSURE FEEL** slider toward **SOFT**, or select the **MORE OPTIONS** button and decrease the **CLICK FORCE** setting.

The Graphire Pen tip does not function.

Make sure the status LED changes from orange to green when the tip is pressed. If it does not, you may have defective hardware (see [Troubleshooting](#)).

Check the control panel's **TOOL BUTTONS** tab and verify that the tip is assigned to a **LEFT-CLICK** function.

The side switch does not work.

Be sure you press the side switch when the pen tip is in proximity—do this without pressing down on the pen tip.

From the Wacom control panel, verify that the side switch is set to the proper function for the application and tool that you are using.

Make sure the tablet status LED changes from orange to green when you press the side switch. If it does not, you may have defective hardware (see [Troubleshooting](#)).



[Contents](#)

[Index](#)



HAVING TROUBLE?

Page 95

Changing the function settings for the Graphire tools has no effect.

Make sure that you change the settings for the tool and the application that you are using. See [Working with Graphire Tools](#) and [Working with Application-Specific Settings](#).

The screen cursor jumps back.

Do not place the Graphire Pen or Cordless Mouse on the tablet when using another pointing device. Leaving your tool on the tablet may interfere with screen cursor positioning when using other input devices.

Cannot move the cursor where you want to on the screen, or the line you are drawing does not line up with the location of the pointer in paint applications.

Open the Wacom control panel and go to the MAPPING tab. Verify that PEN MODE is selected and that the DISPLAY AREA is set to ENTIRE DISPLAY for the selected tool and application. If this does not help, click on the RESET TAB TO DEFAULTS button to reestablish tablet to screen mapping.

If this does not work, open the Windows folder and delete the WACOM.DAT file. Then restart your computer. When the tablet driver loads, it will create a new preferences file with the factory default settings.



[Contents](#)

[Index](#)



[HAVING TROUBLE?](#)

Page 96

WINDOWS-SPECIFIC PROBLEMS

Double-clicking is difficult.

Be sure you are quickly tapping the tablet twice in the same place on the tablet's active area.

Wacom recommends using the side switch to double-click (review the techniques in [Clicking](#)).

Try increasing the DOUBLE-CLICK DISTANCE or reducing the double-click speed (see [Adjusting Double-Click](#)).

Try using a lighter TIP PRESSURE FEEL (see [Adjusting Tip Feel](#)).

After changing right- and left-handed settings in the Mouse control panel, the Graphire Pen tip no longer functions properly and the Graphire Cordless Mouse button functions are reversed.

This will reverse the right and left button settings on your Wacom tools. Restart Windows for your Wacom tool settings to be correctly recognized.

In Windows 95, 98, or Me, your Graphire tools do not function inside a full screen DOS window.

You must use a mouse when working in a full screen DOS window.



Contents

Index



HAVING TROUBLE?

Page 97

After pressing CTRL+ALT+DEL, the screen cursor cannot be controlled with your Graphire tools.

When the CLOSE PROGRAM dialog box (Windows 95, 98, or Me) or the TASK MANAGER (Windows 2000) is active, the Wacom tablet will not work.

Use your mouse or keyboard to continue. When this dialog box is closed, you can again use your Graphire tool to control the screen cursor.

Windows 98 or Me. When working with multiple monitors, the screen cursor positioning is incorrect after moving into the unmapped area of the virtual desktop.

On a multiple monitor system, the tablet is mapped to the virtual desktop (a rectangular area covering all monitors). In the Wacom control panel's PORTION OF DISPLAY dialog box, the screen rectangle represents the entire virtual desktop.

If your video display areas do not form a rectangle because they are different sizes or they are not evenly aligned, the screen cursor positioning will be incorrect after moving into the unmapped area of the virtual desktop. To reestablish the correct screen cursor position, lift your Graphire tool out of tablet proximity and bring it back into proximity over an area of the tablet that is mapped to a display area.

Windows NT 4.0. Application-specific settings do not work correctly or blue screen crash occurs.

You must update the operating system with Service Pack 3 (SP3) or later in order for application-specific settings to work correctly. Running your Graphire tablet software on a Windows NT 4.0 system that is not updated to SP3 may cause you to experience a blue screen crash.



Contents



Index



HAVING TROUBLE?

Page 98

CONTACTING TECHNICAL SUPPORT

If you have a problem with your Wacom tablet, first check [Installation](#) and [Having Trouble?](#) to be sure the tablet is installed correctly. If you cannot find the answer in this manual, you may find updated information about your problem in the Readme file located on the Graphire Tablet CD. For information on accessing Wacom's 24-hour automated online support and for a directory of Wacom Technical Support numbers, see [Who to Call](#) for your region.

LINKING TO THE WEB PAGE

Answers to frequently asked questions and troubleshooting tips can be found on the appropriate web site for your area in [Who to Call](#).

PRE-CONTACT CHECKLIST

You might want to print a copy of this page for reference. When you call, you should be at your computer with the following information available:

- This manual.
- Tablet serial and model number. (Look on the bottom of the tablet.)
- Driver version number. (See the Graphire Tablet CD or Wacom control panel [Diagnostics](#) dialog box.)
- The make and model of your computer, and operating system version.
- A list of peripheral devices attached to your computer.
- The exact wording of any error message that appeared on your screen.
- What happened and what you were doing when the problem occurred.
- How you tried to solve the problem.



Contents



Index



HAVING TROUBLE?

Page 99

WHO TO CALL

If you think your Wacom tablet is not working properly, contact the Wacom support staff for the area where your product was purchased. If you have a modem, you can download the latest software drivers from the Internet.

[USA, CANADA, CENTRAL AND SOUTH AMERICA](#)

[EUROPE, MIDDLE EAST AND AFRICA](#)

[JAPAN](#)

[ASIA PACIFIC \(ENGLISH\)](#)



Contents

Index



HAVING TROUBLE?

Page 100

USA, Canada, Central and South America

Contact your local distributor, or:

Worldwide Web:	http://www.wacom.com/productsupport	24-hour Technical Support information: FAQs—Frequently Asked Questions and answers. Software updates. Email support.
Anonymous FTP Site:	ftp.wacom.com/pub/drivers	Software updates.
Phone:	++1-360-896-9833	Technical Support. (English) (Normal business hours, Pacific Time)
FAX:	++1-360-896-9724	Technical Support. (English)
Internet Email:	support@wacom.com	Automated mailback support. (English)
Fast FAX:	1-800-922-7590 (USA and Canada)	Automated support and sales information. (English)

To purchase parts and accessories, call toll-free: 1-888-884-1870 (USA and Canada only) or visit Wacom's web site at <http://www.wacom.com/wacomdirect/> (USA only). Outside of the USA and Canada, please contact your local dealer or distributor.



Contents

Index



HAVING TROUBLE?

Page 101

Europe, Middle East and Africa

Contact your local distributor, or:

Worldwide Web:	http://www.wacom.de	Software updates, Online support database.
Anonymous FTP Site:	ftp.wacom.de/pub	Software updates.
Phone (Austria):	++43-(0)1-790 825 550	Technical Support.
Phone (Belgium):	++32-(0)2-275 0691	Technical Support.
Phone (France):	++33-(0)1-7020 0070	Technical Support.
Phone (Germany):	++49-(0)69-6630 8200	Technical Support.
Phone (Italy):	++39-(0)2-4528 7050	Technical Support.
Phone (Netherlands):	++31-(0)20-517 4705	Technical Support.
Phone (Switzerland):	++41-(0)1-212 2818	Technical Support.
Phone (United Kingdom):	++44-(0)207-744 0831	Technical Support.
Phone (other countries):	++49-(0)180-500 4397	Technical Support.
FAX:	++49-(0)180-500 4398	Technical Support.
Internet Email:	support@wacom.de	Technical Support.

To purchase parts and accessories, please contact your local dealer or distributor. You can also contact Technical Support using the appropriate number for your region.



Contents



Index



HAVING TROUBLE?

Page 102

Japan

Contact your local distributor, or:

Worldwide Web:	http://tablet.wacom.co.jp	Software updates and information. (Japanese)
Phone:	++81-(0)47-380-8877	Technical Support. (Japanese)
FAX:	++81-(0)47-380-8711	Technical Support. (Japanese)
Internet Email:	tablet@wacom.co.jp	Technical Support and sales. (Japanese)

To purchase parts and accessories, please contact your local dealer or distributor.

Asia Pacific (English)

Contact your local distributor, or:

Worldwide Web:	http://tablet.wacom.co.jp/asia-pacific	Software updates and information. (English)
Phone:	++81-(0)3-3371-1595	Technical Support. (English)
FAX:	++81-(0)3-3371-1468	Technical Support. (English)
Internet Email:	asia-pacific@wacom.co.jp	Technical Support and sales. (English)

To purchase parts and accessories, please contact your local dealer or distributor.



Contents

Index



HAVING TROUBLE?

Page 103

APPENDICES

This section contains information on working with multiple tablets. You will also find product specifications, a listing of available parts and accessories, and license and warranty information.

[INSTALLING MULTIPLE TABLETS](#)

[PRODUCT SPECIFICATIONS](#)

[PARTS AND ACCESSORIES](#)

[LICENSE AND WARRANTIES](#)

[LICENSE AND WARRANTIES \(EUROPE, AFRICA AND MIDDLE EAST\)](#)



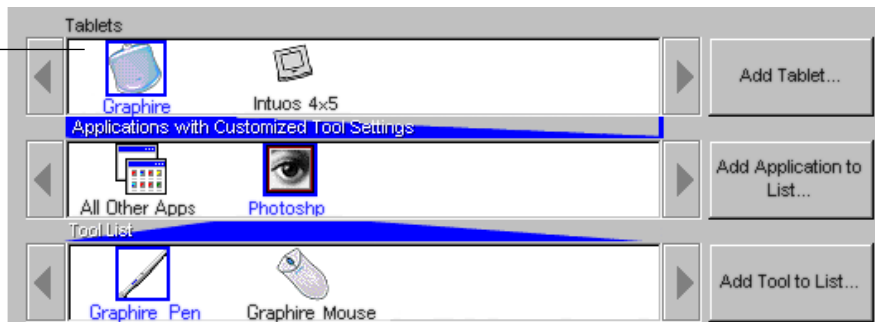
Contents

Index

INSTALLING MULTIPLE TABLETS

If multiple Wacom tablets are installed on a single computer when the Wacom control panel is opened, a TABLET LIST is displayed above the APPLICATION LIST. The TABLET LIST contains an icon for each installed tablet, and allows you to select the tablet for which your changes will apply.

Select a tablet icon for which to customize application and tool settings.



To add a new tablet, connect it to your computer. Remember that you must always first shut down your computer when removing or attaching a serial tablet.

- For USB tablets, the system searches the USB ports. When the new tablet is found, it is automatically initialized. Note that you may be prompted to insert your Graphire Tablet CD into the CD-ROM drive.
- For serial tablets, if your Windows system supports “plug and play”, the system searches the serial ports. If the new tablet is found, it is automatically initialized. Otherwise, from the control panel’s ADD menu, choose TABLET.... When the ADD TABLET dialog box appears, click the ADD SERIAL... button and follow the prompts.
- If multiple tablets are installed, the tablet used to open the Wacom control panel is selected as the default tablet.



PRODUCT SPECIFICATIONS

GRAPHIRE TABLET (MODELS ET-0405-R, ET-0405-U)

Active area (W x D)	127.6 x 92.8 mm (5.02 x 3.65 in)
Physical size (W x D x H)	209.0 x 214.0 x 9.3 mm (8.23 x 8.43 x 0.37 in)
Cable length	1.5 m (4.9 ft) for USB tablets, 1.8 m (5.9 ft) for serial tablets
Weight	341 g (0.75 lb) (USB tablets), 366 g (0.81 lb) (serial tablets)
Power consumption	0.2 watts
Coordinate resolution	40 lpmm (1015 lpi)
Accuracy	+/- 0.5 mm (0.02 in)
Maximum report rate	100 points per second
Communication interface	RS-232C Serial (serial tablets) USB (USB tablets)
Connector	9-pin, D-sub, female (serial tablets) USB A (USB tablets)
Power requirements (USB tablets)	DC 5V, 40 mA, from USB port
Power supply (serial tablets)	DC 5V 40 mA, from PS/2 port
Operating temperature	5 to 40 degrees C (41 to 104 degrees F)
Storage temperature	-10 to +60 degrees C (14 to 140 degrees F)
Operating relative humidity	20% to 80% noncondensing
Storage relative humidity	20% to 90% noncondensing
Certification	FCC class B
Compliance	VCCI class B, CE



Contents

Index



APPENDICES

Page 106

GRAPHIRE PEN (MODEL EP-100E)

Physical size (L x D)	145 x 12.5 mm (5.71 x 0.49 in)
Pressure levels	512 levels
Pen tip travel	0.1 mm (0.004 in) or less
Eraser tip travel	0.1 mm (0.004 in) or less
Weight	11 g (0.02 lb), approximately
Tip refill type	Polyacetal (Part No. PSI-A007)

GRAPHIRE CORDLESS MOUSE (MODEL EC-100)

Physical size (L x W x H)	125 x 65 x 39 mm (4.92 x 2.56 x 1.54 in)
Weight	90 g (0.20 lb), approximately
Fingerwheel type	Continuous rotation, 24 clicks per turn

GRAPHIRE INKING PEN (MODEL EP-200, OPTIONAL)

Pen tip travel	0.1 mm (0.04 in) or less
Pressure levels	512 levels
Physical size (L x D)	151 x 12.5 mm (5.94 x 0.49 in)
Weight	12 g (0.42 oz), approximately
Tip refill types	Polyacetal (Part No. PSI-A011) Ink refill, black (Part No. PSI-A023)



Contents

Index



APPENDICES

Page 107

PARTS AND ACCESSORIES

Description

Part Numbers

	Slate Blue	Tangerine	Strawberry	Grape	Blueberry	Lime	Graphite
Graphire Serial Tablet	ET-0405-R						
Graphire USB Tablet	ET-0405-U	ET-0405-U0T	ET-0405-U0S	ET-0405-U0G	ET-0405-U0B	ET-0405-U0L	ET-0405-U0H
Graphire Pen	EP-100E	EP-100E-0T-00	EP-100E-0S-00	EP-100E-0G-00	EP-100E-0B-00	EP-100E-0L-00	EP-100E-0H
Graphire Cordless Mouse	EC-100	EC-100-0T-00	EC-100-0S-00	EC-100-0G-00	EC-100-0B-00	EC-100-0L-00	EC-100-0H
Overlay Sheet	PSH-A174-01	PSH-A174-05					
Pen Stand	PST-A023	PST-A023-0T	PST-A023-0S	PST-A023-0G	PST-A023-0B	PST-A023-0L	PST-A023-0H
Replacement Tips for Pen (EP-100E models)	PSI-A007						
Pen Tether	FUZ-A089						
Graphire Inking Pen	EP-200-00-01						

ORDERING PARTS AND ACCESSORIES

To purchase parts and accessories, see who to call for your region:

[USA, CANADA, CENTRAL AND SOUTH AMERICA](#)

[EUROPE, MIDDLE EAST AND AFRICA](#)

[JAPAN](#)

[ASIA PACIFIC \(ENGLISH\)](#)



Contents



Index



APPENDICES

Page 108

LICENSE AND WARRANTIES

(WORLDWIDE, EXCEPT FOR EUROPE, AFRICA AND MIDDLE EAST)

SOFTWARE LICENSE

This legal document is an agreement between you, the end-user, and Wacom Technology Corporation (Wacom).

1. Grant of License. The enclosed product includes computer programs embedded in firmware and accompanying diskette or CD-ROM (the "Software"). The Software is licensed, not sold, to you for use only with Wacom products upon the terms of this license, and Wacom reserves any rights not expressly granted to you. Wacom grants to you a non-exclusive right to use this copy of the Software in conjunction with a Wacom product at a single location.

2. Ownership of Software. Although you may own the product in which the Software is originally recorded, Wacom retains ownership of the Software itself. You acknowledge that the Software is Wacom's property, and contains valuable confidential, unpublished information developed or acquired by Wacom at great expense, including data processing algorithms, innovations and concepts. The Software is protected by copyright and other federal and state laws. You agree to use your reasonable best efforts to protect the Software from unauthorized reproduction, distribution, disclosure, use, or publication.

3. Copy Restrictions. Unauthorized copying of the Software is expressly forbidden.

4. Use Restrictions. You may not decompile, reverse assemble, disassemble or reverse engineer the Software.

5. Termination. This License is effective until terminated. This License will terminate automatically without notice from Wacom if you fail to comply with any provisions of the License.

6. Miscellaneous. This License is governed by the laws of the United States of America and the state of California except in Asia Pacific and by the laws of Japan for Asia Pacific.



Contents

Index



APPENDICES

Page 109

LIMITED WARRANTY

Wacom warrants the product, except for the Software, to be free from defects in materials and workmanship under normal use and service for a period of one (1) year from the date of original retail purchase, as evidenced by a copy of the receipt and a registration card that has been returned to Wacom within 30 days of purchase.

The Software is licensed “as is.” Wacom makes no warranty with respect to its quality or performance. Wacom cannot guarantee you uninterrupted service or the correction of any errors.

Upon discovery of a defect in the product, except in the Software, within the Warranty Period, you should contact Wacom Technical Support via telephone to obtain an RMA (Return Merchandise Authorization) number and instructions for shipping the product to a service location designated by Wacom. You should send the product, shipping charges prepaid, to the designated service location, accompanied by the return authorization number, your name, address and telephone number, proof of purchase date, and a description of the defect. Wacom will pay for return shipping by United Parcel Service or by an equivalent service as chosen by Wacom.

Wacom’s sole obligation and entire liability under this warranty shall be, at Wacom’s option, either the repair or replacement of the defective product or parts thereof of which Wacom is notified during the Warranty Period; provided, however, that you are responsible for (i) the cost of transportation of the product to the designated service location and (ii) any loss or damage to the product resulting from such transportation.

Wacom shall have no responsibility to repair or replace the product if the failure of the product has resulted from accident, abuse, misuse, negligence, or unauthorized modification or repair, or if it has been handled or stored other than in accordance with Wacom’s storage instructions.

Any descriptions, drawings, specifications, samples, models, bulletins, or similar material, used in connection with the sale of the product, shall not be construed as an express warranty that the product will conform or comply with your requirements.



Contents



Index



APPENDICES

Page 110

EXCEPT FOR THE LIMITED WARRANTY DESCRIBED ABOVE, THERE ARE NO OTHER WARRANTIES MADE BY WACOM ON THIS PRODUCT. NO ORAL OR WRITTEN INFORMATION OR ADVICE GIVEN BY WACOM, ITS DEALERS, DISTRIBUTORS, AGENTS, OR EMPLOYEES SHALL CREATE A WARRANTY OR IN ANY WAY INCREASE THE SCOPE OF THIS WARRANTY, AND YOU MAY NOT RELY ON ANY SUCH INFORMATION OR ADVICE. THIS WARRANTY GIVES YOU SPECIFIC LEGAL RIGHTS, WHICH VARY FROM STATE TO STATE.

WACOM LIMITS THE DURATION OF ANY LEGALLY IMPLIED WARRANTIES INCLUDING IMPLIED WARRANTIES OF MERCHANTABILITY OR FITNESS FOR A PARTICULAR PURPOSE, TO THE DURATION OF WACOM'S EXPRESS WARRANTY. SOME STATES DO NOT ALLOW LIMITATIONS ON HOW LONG AN IMPLIED WARRANTY LASTS. SO THE ABOVE LIMITATION MAY NOT APPLY TO YOU.

NEITHER WACOM NOR ANYONE ELSE WHO HAS BEEN INVOLVED IN THE CREATION, PRODUCTION, OR DELIVERY OF THIS PRODUCT SHALL BE LIABLE FOR ANY DIRECT, CONSEQUENTIAL, OR INCIDENTAL DAMAGES (INCLUDING DAMAGES FOR LOSS OF BUSINESS PROFITS, BUSINESS INTERRUPTION, LOSS OF BUSINESS INFORMATION AND THE LIKE) ARISING OUT OF THE USE OF OR INABILITY TO USE SUCH PRODUCT, EVEN IF WACOM HAS BEEN ADVISED OF THE POSSIBILITY OF SUCH DAMAGES. BECAUSE SOME STATES DO NOT ALLOW THE EXCLUSION OR LIMITATION OF LIABILITY FOR CONSEQUENTIAL DAMAGES, THE ABOVE LIMITATION MAY NOT APPLY TO YOU.

In the event that any of the above limitations are held unenforceable, Wacom's liability for any damages to you or any party shall not exceed the purchase price you paid, regardless of the form of any claim.

This Limited Warranty is governed by the laws of the United States of America and the state of California.

This Limited Warranty is valid for and only applies to products purchased and used inside the United States (and its territories or possessions) and Canada.



Contents

Index



APPENDICES

Page 111

WARRANTY ON SALES OUTSIDE OF U.S. AND CANADA

For products purchased or used outside of the United States and Canada, upon discovery of a defect in the product, except in the Software, within the Warranty Period you should notify your local dealer or distributor. In all other respects the terms of the warranty as set forth above apply to such sales.

Should you have any questions about this Agreement, or if you desire to contact Wacom for any reason, please contact in writing:

In North and South America contact:

Wacom Technology Corporation
1311 S.E. Cardinal Court
Vancouver, Washington 98683
U.S.A.

In Asia and Asia Pacific contact:

WACOM Co., Ltd.
2-510-1 Toyonodai
Otone-Machi, Kitasaitama-Gun
Saitama, 349-11
Japan



Contents

Index



APPENDICES

Page 112

LICENSE AND WARRANTIES (EUROPE, AFRICA AND MIDDLE EAST)

SOFTWARE LICENSE AGREEMENT

Important Notice to Customers

This product contains copyrighted computer programs ("software") which are the inalienable intellectual property of WACOM Europe GmbH ("WACOM"). This software is both integrated within the product and also contained on the accompanying data carrier. The purchase of this product from your dealer does not include WACOM's software and the associated rights of usage. WACOM grants you, the user, the right to use the software solely in accordance with the conditions of this software license agreement. By purchasing this product you agree to the terms of this license.

Entitlement to Use the Software

WACOM grants the customer a personal, non-exclusive license to use the software solely in combination with this product and for the proper operation of this product. This license may be transferred only in connection with this product.

The use of this software includes solely the permanent or temporary, complete or partial copying of the software by means of loading, displaying, executing, transmitting or saving for the purpose of executing the commands and data it contains or of observing, examining or testing the functions of the software.

The customer may not license, lease or loan the software to a third party, nor allow a third party to access the software in any other way. The customer may not without prior written authorization from WACOM copy, modify, transmit or edit the software, apart from the actions of copying necessary to create a backup copy and for the purposes outlined in section 2 above. The customer may not decompile the software; if the software contains interfaces to software which is not supplied by WACOM, WACOM shall make the necessary information available to the customer upon request, provided that the customer can prove his/her entitlement to use the software and that he/she agrees to pay the copying and postage costs.



Contents

Index



APPENDICES

Page 113

LIMITED WARRANTY AND LIABILITY

WACOM warrants to you as the original end-user that the product hardware is free from defects in materials and workmanship under normal use and service for a period of TWO (2) YEARS after the date of purchase, provided that they are unused at the time of such purchase. WACOM further warrants to you the accompanying diskettes against defects in materials and workmanship for a period of SIX (6) MONTHS after the date of purchase.

The Software is licensed and distributed "AS IS". WACOM makes no warranties, expressed or implied, with respect to its quality, performance, merchantability and fitness for a particular purpose (including related manuals and documentation). WACOM cannot guarantee you uninterrupted service or the correction of any errors.

Upon discovery of a defect in the product, except in the Software, within the applicable Warranty Period, you should return them in the original packaging to the place of your original purchase, together with your name, address, telephone number, a description of the problem and a copy of the original invoice. You are responsible for any loss or damage to the product resulting from such transportation. WACOM's sole obligation and entire liability under this warranty shall be, at WACOM's option, either the repair or the replacement of product or parts thereof that prove defective and that were returned within the applicable Warranty Period.

WACOM shall have no responsibility to repair or replace the product if (a), in the opinion of WACOM, the failure of the product has resulted from accident, abuse, misuse, negligence, misapplication, or unauthorized modification or repair, or (b) the product has been handled or stored other than in accordance with WACOM's storage instructions, or (c) the failure is due to normal wear and tear, or (d) you fail to fulfill your obligations as described above. In case that any claim presented under warranty is found upon investigation to be either outside the duration or the scope of this warranty, or in case that the product is found to be not defective, then the cost of such investigation and repair shall be borne by you.

Any descriptions, drawings, specifications, samples, models, bulletins, or similar material, used in connection with the sale of the product, shall not be construed as an express warranty that the product will conform or comply with your requirements.



Contents



Index



APPENDICES

Page 114

LIABILITY OF WACOM

WACOM and its employees or representatives shall not be liable for any damages, on any legal grounds, unless these damages (a) may be attributed to intent or to gross negligence or (b) result from the culpable infringement of an essential contractual obligation (cardinal obligation) in a way which may endanger the achievement of the contractual purpose or (c) result from the absence of a guaranteed feature or (d) are covered by product liability law. If WACOM is liable for the culpable infringement of cardinal obligations, in the absence of intent or gross negligence, WACOM's total liability shall be limited to those damages and to that range of damages of which the occurrence could typically have been foreseen by WACOM under the circumstances known to it at the time the agreement was concluded.

In the event that any of the above limitations are held unenforceable, WACOM's aggregate liability for any damages to you or any party shall not exceed the purchase price of the defective, damaged or undelivered product as determined by the net invoiced price, regardless of the form of any claim. Claims must be reported to WACOM in writing within no more than (1) month after the damage occurred. Upon failure to do so, any claims to the payment of damages will be void. Reseller indemnifies WACOM from any claims by third parties for damages resulting from or connected to resellers fault.

The rights and limitations set forth in this statement do not limit or exclude certain statutory rights that may be applicable in the country of your purchase. If any of the provisions of this statement are declared void, such provisions shall be considered separate from this statement and the statement shall otherwise remain in full force and effect.

This Limited Warranty and Liability is governed by the laws of the Federal Republic of Germany.

Should you have any questions about this Agreement, or if you desire to contact WACOM for any reason, please contact in writing:

WACOM Europe GmbH
Europark Fichtenhain A9
47807 Krefeld
GERMANY



Contents

Index



APPENDICES

Page 115

GLOSSARY

Active area. The drawing area of the tablet where your Graphire tools are detected.

Application-specific settings. Graphire tool and tablet settings that have been customized for individual applications. The control panel enables you to program a tool to behave uniquely in different applications. Your application-specific settings are in effect whenever you use the application.

Aspect. The ratio between the vertical and horizontal dimension of the tablet or display. The ASPECT setting is located on the MAPPING tab, and defines how the tablet area is mapped to the display area. This setting determines if the aspect of the tablet and display are the same.

Click force. The amount of force you must apply to your Graphire Pen tip for a click to occur.

DOS shell. A DOS session that is running under the Windows operating system.

Double-click assist. A control panel option that makes it easier to double-click. When selected, you can customize the double-click speed and distance.

Double-click distance. The maximum distance (in screen pixels) that the cursor can move between clicks and still be accepted as a double-click. Increasing the double-click distance makes double-clicking easier, but may cause a delay in brush strokes in some graphics applications.



Contents



Index

Double-click speed. The maximum time that can pass between clicks and still be accepted as a double-click. Increasing the double-click time makes double-clicking easier.

Eraser-aware application. A software application that has built-in support for the Graphire eraser. These applications take advantage of the eraser in different ways, depending on what makes sense for the application.

Fingerwheel. The control wheel on the Graphire Cordless Mouse.

Landscape. A tablet ORIENTATION setting. In landscape orientation, the tablet cable is at the top. See also [portrait](#).

Mapping. The relationship between your Graphire tool position on the tablet and the cursor position on the monitor screen.

Modifier. Modifier keys include SHIFT, ALT, and CTRL. You can customize your Graphire tool to simulate a modifier key.

Mouse Mode. A method for positioning the screen cursor. When you place a Graphire tool on the tablet, you can navigate the screen cursor like a mouse. This is known as relative positioning, and is the default setting for the Graphire Cordless Mouse. See also [Pen Mode](#).



Contents



Index



GLOSSARY

Page 117

Nib. The replaceable tip of the Graphire Pen.

Pen Mode. A method of positioning the screen cursor. Wherever you place your Graphire tool on the tablet, the screen cursor will be at that same corresponding point on the screen. This is known as absolute positioning, and is the default setting for the Graphire Pen. Absolute positioning (Pen Mode) allows you to position the screen cursor without having to first find it and then move it with a “pick up and roll” action. See also [Mouse Mode](#).

Pixel. The smallest unit of measure on your monitor screen.

Pop-up Menu. A window that displays a list of keystroke functions and mapping options. You can customize the tool buttons of your Graphire Pen and Cordless Mouse to display this menu.

Portrait. A tablet ORIENTATION setting. In portrait orientation, the tablet cable is on the side. See also [landscape](#).

Pressure sensitive. A quality of the Graphire Pen tip and eraser that senses the amount of pressure being applied. This is used to create natural-looking pen, brush, and eraser strokes in applications that are pressure-sensitive.

Pressure-sensitive application. Any application that supports pressure-sensitive input.

Proximity. The height above the tablet’s [active area](#) where the Graphire tools are detected. Refer also to the [Proximity](#) section.



Contents



Index



GLOSSARY

Page 118

Screen cursor. The pointer on the display screen. Screen cursors come in different shapes (such as an I-beam, arrow, or box), depending on which application you are running.

Tracking speed. A setting that allows you to adjust the speed at which your screen cursor moves when your Graphire tool is in [Mouse Mode](#).

USB. Universal Serial Bus. A hardware interface standard for connecting computer peripheral devices. USB ports support hot-plugging, which allows you to connect or disconnect a USB device without turning off your computer.

Wintab. An interface standard used by Windows applications for receiving tablet information. Graphire supports all Wintab-compatible applications under Windows.



Contents

Index



GLOSSARY

Page 119

INDEX

About the manual	8	Customizing	
Accessories and parts	108	advanced	
ordering	108	eraser pressure	85
Add menu	78	tip pressure	81
Adding a tool	69	click force	82
Advanced		double-click	49
eraser pressure, customizing	85	eraser feel	55
tip pressure, customizing	81	Graphire Cordless Mouse	
Application-specific settings		buttons	64
creating	72	fingerwheel	65
working with	70	tabs	47
Aspect	60	Graphire Pen tabs	46
Button functions	51	Graphire tools	46
Care, for tools and tablet	36	Pop-up Menu	66
Checklist, pre-contact	99	pressure curve	83
Click force adjustment	82	tablet to screen mapping	56
Clicking, with pen	27	tip feel	48
Connection, checking tablet	76	tool buttons	50
Control panel		Diagnostics	91
buttons	45	Display area	63
features	40	Double-click, customizing	49
lists	43	Double-clicking, how to	27
opening	39	Drawing with pressure	31
tabs	41	Edit menu	77
Copying settings	86	Environmental conditions	36
		Eraser feel, customizing	55



Contents

Index

Erasing, with pen	32	Help menu	79
Eye-hand coordination exercise	33	Holding the pen	25
Features	20	Information, product	18
control panel	40	Installation	11
Graphire tools	21	serial tablet	15
tablet	20	things to know	12
File menu	77	USB tablet	13
Fingerwheel		Installing multiple tablets	105
customizing	65	Interference, radio and television	3
using	35	Keystrokes, adding to Pop-up Menu	67
Functions, button	51	Language menu	79
General problems, troubleshooting	94	License and Warranties	109
Graphire Cordless Mouse		License and Warranties (Europe)	113
buttons, customizing	64	Manual, about	8
tabs, customizing	47	Mapping	
testing	92	options, adding to Pop-up Menu	67
using	34	Menus	77
fingerwheel	35	Add	78
Graphire Pen		Edit	77
clicking with	27	File	77
double-clicking with	27	Help	79
drawing with pressure	31	Language	79
erasing with	32	Remove	78
holding	25	Multiple tablets, installing	105
pointing	26	Nib, replacing	37
replacing the tip	37	Ordering parts and accessories	108
tabs, customizing	46	Orientation	59
testing	91		
using	25		



Contents



Index

Parts and accessories	108	Tablet	
ordering	108	area	61
Pointing, with pen	26	connection, checking	76
Pop-up Menu, customizing	66	storing	36
Positioning mode	58	working with	24
Pressure curve adjustment	83	Tablet to screen mapping, customizing	56
Pressure, drawing with	31	Technical Support	
Product information	18	contacting	99
Proximity	30	linking to web page	99
Radio and television interference	3	numbers	
Registration	18	for Africa	102
Remove menu	78	for Asia Pacific	103
Removing		for Canada	101
keystrokes from Pop-up Menu	67	for Central America	101
mapping options from Pop-up Menu	67	for Europe	102
settings	75	for Japan	103
Serial tablets		for Middle East	102
problems, troubleshooting	94	for South America	101
testing	90	for USA	101
Settings		pre-contact checklist	99
changing for specific application and tool	75	who to call	100
copying	86	Testing	
removing	75	Graphire Cordless Mouse	92
Software		Graphire Pen	91
driver, downloading the latest	100	tools	91
uninstalling	18	Tip	
Specifications, product	106	feel, customizing	48
Graphire Cordless Mouse	107	replacing	37
Graphire Inking Pen	107	Tool buttons, customizing	50
Graphire Pen	107	Tool List, adding tools to	74
tablet	106		



Contents



Index

Tools	
adding	69
adding to Tool List	74
customizing	46
testing	91
Troubleshooting	88
general problems	94
serial tablet problems	94
serial tablets	90
USB	
tablet problems	93
tablets	88
verifying readiness	89
Windows-specific problems	97
Uninstalling software	18
USB	
readiness, testing	89
tablet problems, troubleshooting	93
tablets, testing	88
WACOM International Offices	124
Warranties and License	109
Warranties and License (Europe)	113
Web page, linking to	99
Windows-specific problems, troubleshooting	97
Work area, setting up	23



Contents



Index

WACOM INTERNATIONAL OFFICES

WACOM Technology Corporation

1311 S.E. Cardinal Court

Vancouver, WA 98683

U.S.A.

Telephone

General: ++1-360-896-9833

Fax: ++1-360-896-9724

WACOM Europe GmbH

Europark Fichtenhain A9

47807 Krefeld

Germany

Telephone

General: ++49-(0)2151-3614-0

Fax: ++49-(0)2151-3614-111

WACOM Co., Ltd.

2-510-1 Toyonodai

Otone-Machi, Kitasaitama-Gun

Saitama, 349-1148

Japan

Telephone

General: ++81-(0)480-78-1213

Fax: ++81-(0)480-78-1217



Contents



Index