



Pen Display

Software User's Manual

CONTENTS

About the manual	2
Navigating the manual	3
CUSTOMIZING	4
Opening the control panel	4
Control panel overview	5
Control panel settings	6
Calibrating the pen display	7
Customizing the pen	8
Adjusting tip feel and double-click	8
Adjusting eraser feel	9
Advanced tip and eraser pressure settings	10
Customizing pen buttons	11
Button functions	12
Using the pen display with other monitors	17
Using and customizing the Radial Menu	18
Working with Display Toggle	19
Application-specific settings	20
Creating an application-specific setting	21
Changing application-specific settings	22
Removing application-specific settings	22
Installing multiple tablets	22
GLOSSARY	23
INDEX	25





ABOUT THE MANUAL

This document provides quick access to information about the pen display. Click on a navigation button or highlighted word to move through the document. The information is common to Windows and Macintosh computers and Windows screen captures are shown, unless otherwise noted.

Note: This manual does not contain information for installing the pen display. Please refer to your product installation guide for details on installing the pen display.

If you are new to electronic documentation, be sure to read [navigating the manual](#).

- SMALL CAPITAL LETTERS are used to identify the names of keyboard keys, dialog boxes, and control panel options.
- Remember that you can always use your viewer zoom-in tool to increase the size of the page on your display screen.
- The following kinds of information are not included with this product: information about your specific computer hardware or operating system, or information about your application software. Your best source for this information is the set of manuals and disks that came with your hardware, operating system, or application.
- Many graphics applications have built-in support for pen display features (such as pressure sensitivity). Visit Wacom's web site to find a listing of applications that support these features. For information on how best to use pen display features within a specific application, see the instructions in that application's manuals.

Wacom's philosophy is to continually improve all of its products. As a result, engineering changes and improvements are made from time to time. Therefore, some changes, modifications, and improvements may not be covered in this document.





NAVIGATING THE MANUAL

Use the navigation controls to move through the manual:



Go to front page.

Contents

Go to table of contents.

Index

Go to index.



Go back to previous view.



Page back, or page forward.

topic

Go to topic.



Topic continued.

Adobe Reader provides you with additional tools for using and printing the manual. See the Adobe Reader help for more information.





CUSTOMIZING

After you master the basics of using your pen display, you may want to customize the way the product works. This chapter describes how to use the Wacom Tablet control panel to adjust your pen display and pen settings.

Advanced users can learn how to further optimize the pen display by creating [application-specific settings](#).

[Opening the control panel](#)

[Control panel overview](#)

[Control panel settings](#)

OPENING THE CONTROL PANEL

To open the Wacom Tablet control panel, use the pen on the pen display:

- **Windows.** Click on the Windows START button and choose ALL PROGRAMS. Then select WACOM TABLET and choose the WACOM TABLET PROPERTIES option.
- **Macintosh.** Open SYSTEM PREFERENCES from either the Dock, the Apple menu, or from the APPLICATIONS folder. Then click on the WACOM TABLET icon.

After you have opened the control panel, you can begin customizing the pen display.

Note: User-specific preferences are supported. After logging in, each user can customize their personal settings in the Wacom Tablet control panel. Switching to another user will automatically load the settings for that user.



CONTROL PANEL OVERVIEW

Use the Wacom Tablet control panel to customize the pen display.

The upper portion of the control panel displays icons representing your TABLET, TOOL, and APPLICATION settings.

The screenshot shows the 'Wacom Tablet Properties' window. At the top, there are three rows of settings: 'Tablet' (DTU-1931), 'Tool' (Functions and Pen), and 'Application' (All). Below these are tabs for 'Pen', 'Eraser', and 'Calibrate'. The 'Pen' tab is active, showing a 'Tip Feel' slider (Soft to Firm), a 'Current Pressure' field, and a 'Click' button. To the right, there are 'Double Click' and 'Right Click' dropdown menus, and a 'Tip Double Click Distance' slider (Off to Large). At the bottom, there are 'About', 'Options...', and 'Help' buttons. A 'Default' button is also present near the bottom right.

Choose FUNCTIONS to customize the Radial Menu settings.
Choose PEN to customize your pen settings.

Tabs display customizable settings for the selected TOOL. See control panel settings.

Displays a dialog box containing information about the pen display tablet and software, including an option to access the DIAGNOSTICS dialog box.

The DEFAULT button resets the selected tab to its default settings.

Displays advanced options.

Displays this manual.

As you explore the control panel, experiment with different settings to find what works best for you. Any changes you make will take effect immediately, but you can always click DEFAULT to return a tab to the factory settings.

Tool Tips are available for most control panel items. Simply position the screen cursor over an item and let it rest there; in a few moments the Tool Tip will pop up.

Additionally, your keyboard tab and arrow keys can be used to navigate the control panel.



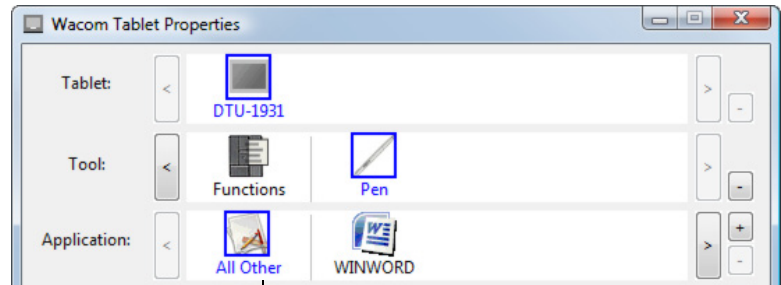


Control panel lists and tabs: The control panel TABLET, TOOL, and APPLICATION lists allow you to select the tablet, tool, or application for which you want to change settings. To change tool settings, open the control panel and either choose FUNCTIONS or PEN. See [customizing the pen](#) for more information.

The TABLET list displays an icon for any supported tablet that has been installed on your system. All settings shown below this list apply to the selected tablet.

The TOOL list displays an icon for the tablet FUNCTIONS and for the PEN.

Note: When the pen is first used on the tablet it is automatically added to the TOOL list, and functions with the default settings.



Your current selections are highlighted.

The APPLICATION list lets you define TOOL settings that only apply to a specific application. See [application-specific settings](#).

See also [installing multiple tablets](#).

Note: The APPLICATION list is for advanced users; it is not necessary to select or add applications in order to customize your pen.

CONTROL PANEL SETTINGS

Use these sections as a reference when working with the Wacom Tablet control panel; they provide detailed information about each tab and some of the more complex topics. Many of the sections also contain useful customizing tips.

[Calibrating the pen display](#)

[Customizing the pen](#)

[Using and customizing the Radial Menu](#)

[Working with Display Toggle](#)

[Application-specific settings](#)

[Installing multiple tablets](#)





CALIBRATING THE PEN DISPLAY

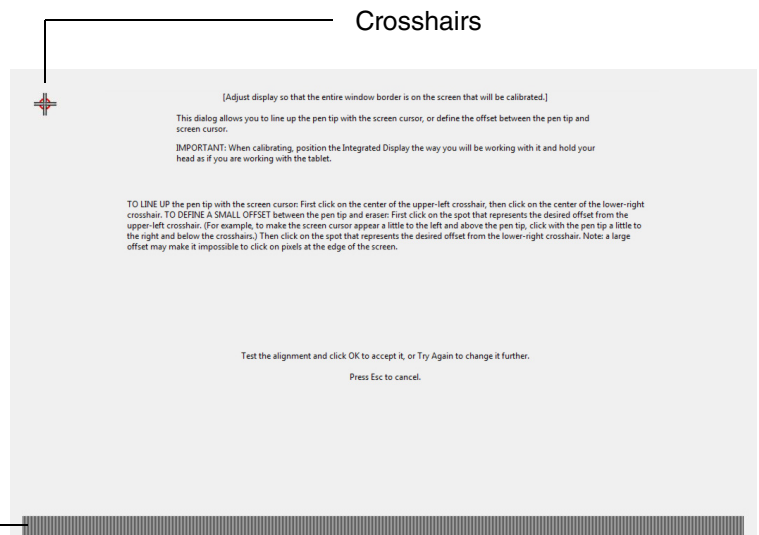
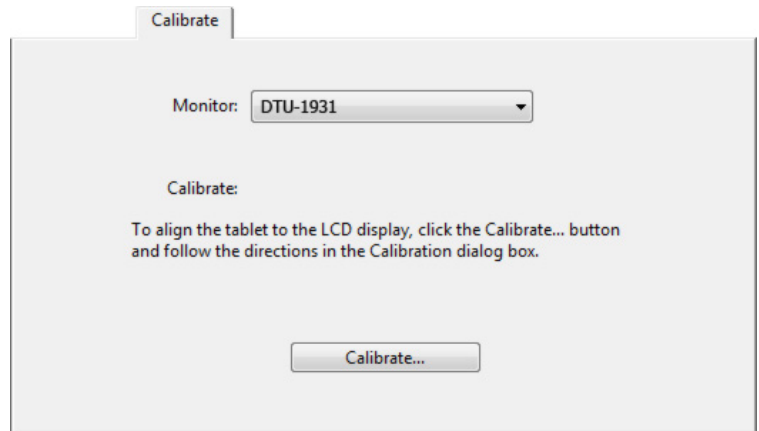
You will need to calibrate the pen display tablet in order to align the screen cursor position with the position of the pen on the display screen. This is required to adjust for parallax caused by the display screen cover glass and coating. Set the pen display in its working position, then follow the procedure below.

Important: When using a VGA connection with the pen display, make sure the LCD monitor is properly adjusted before calibrating the tablet.

1. In the Wacom Tablet control panel, select the PEN from the TOOL list and then select the CALIBRATE tab.
2. If you are working with multiple monitors, select the MONITOR option corresponding to the pen display. (Only monitors that are set to one of the resolutions supported by the pen display will appear in the list.)
3. Click on the CALIBRATE... button to activate the calibration screen.
4. Hold the pen and position your head as you normally do when working with the pen display. Use the pen tip to click on the center of the crosshairs in the upper-left corner.
5. Then click on the center of the crosshairs that are displayed in the lower-right corner.
6. Test the alignment by positioning the pen at a few different points on the display. Click OK to accept the calibration. Click TRY AGAIN to recalibrate.

Be sure to read the directions in the calibration screen for detailed instructions and additional options. The calibration setting applies to all applications.

Note: If more than one pen display tablet is installed on your system, be sure to select the pen display unit you are working with from the control panel's TABLET list.



Adjustment pattern for pitch and phase.

See the pen display Installation Guide and Hardware Manual for details on adjusting pitch and phase for a VGA connection.

Tip: If you prefer to see the screen cursor slightly offset from the actual position of the pen tip, calibrate by clicking on a spot showing that offset from the crosshairs. For example, to have the screen cursor appear 1/10th of an inch above and to the left of the pen tip, calibrate by clicking on a spot 1/10th of an inch below and to the right of the crosshairs.





CUSTOMIZING THE PEN

Customizing your pen is easy. First open the Wacom Tablet control panel using the pen. The pen will be selected in the TOOL list and the appropriate tabs will be displayed. Select a tab and choose from the available options.

[Adjusting tip feel and double-click](#)

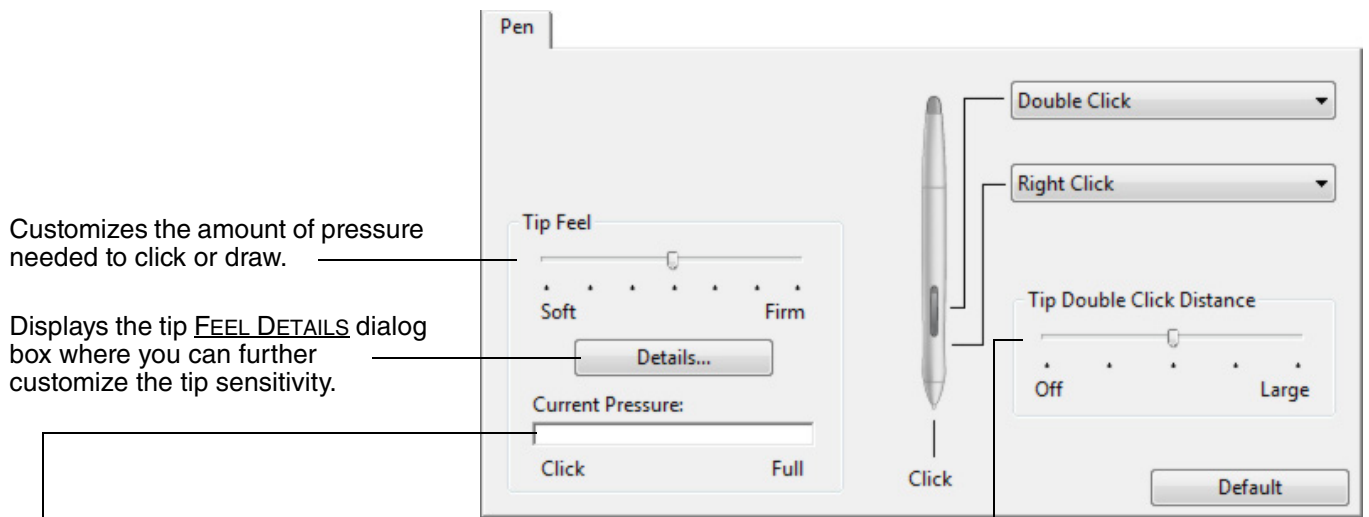
[Adjusting eraser feel](#)

[Customizing pen buttons](#)

[Application-specific settings](#)

ADJUSTING TIP FEEL AND DOUBLE-CLICK

To adjust the tip sensitivity of your pen, select the PEN tab. To create broad brush strokes or to click with a light touch, use a soft tip setting. For maximum control while drawing thin lines, use a firm tip setting.



Customizes the amount of pressure needed to click or draw.

Displays the tip **FEEL DETAILS** dialog box where you can further customize the tip sensitivity.

With your screen cursor positioned over an empty area of your control panel, press down on the tablet with your pen tip to test the current tip feel setting. You can use the **CURRENT PRESSURE** bar to determine how hard you must press on the pen to reach maximum pressure.

Adjusts the size of the double-click area. A larger setting makes double-clicking easier.

Drag the slider to the **OFF** position if you do not want **double-click assist**.

Hints:

- Use a soft **TIP FEEL** for a wider range of pressure values with most pressure-sensitive applications.
- In some applications a soft pressure setting can make the pen overreact – any small press on the pen is magnified on the screen. If you experience this, try a firmer **TIP FEEL** setting.
- To make double-clicking easier, expand the tap area that accepts a double-click (the double-click distance).

Note: A large double-click distance may cause a delay at the beginning of your brushstrokes in some drawing applications. If you notice such effects, try setting a smaller double-click distance and using the side switch to double-click.



ADJUSTING ERASER FEEL

To adjust the eraser sensitivity of your pen, select the ERASER tab.

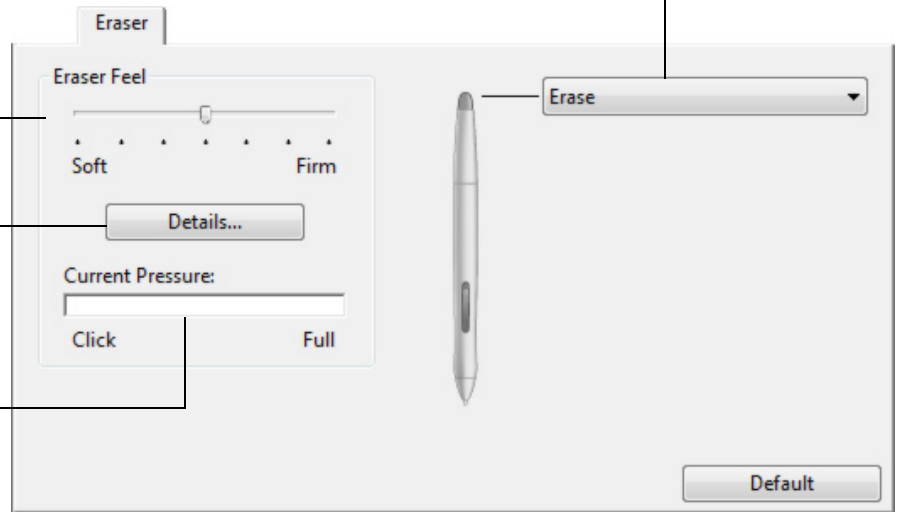
Note: Some product configurations may include a pen without an eraser.

Select the button function to perform when using the eraser.

Customizes the amount of pressure needed to erase.

Displays the eraser FEEL DETAILS dialog box where you can further customize the eraser sensitivity.

With your screen cursor positioned over an empty area of your control panel, press down on the tablet with your pen's eraser to test the current eraser feel setting. You can use the CURRENT PRESSURE bar to determine how hard you must press on the eraser to reach maximum pressure.



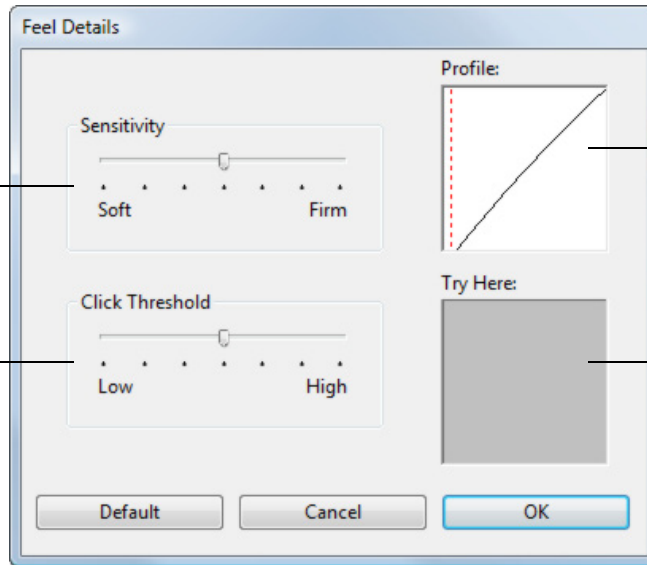
ADVANCED TIP AND ERASER PRESSURE SETTINGS

To further customize tip or eraser pressure settings, from the PEN or ERASER tab click on the DETAILS... button to display the FEEL DETAILS dialog box. The options within this dialog box enable you to change the tip or eraser pressure sensitivity and click threshold settings independently. (In the PEN and ERASER tabs, these settings are adjusted simultaneously with the TIP FEEL or ERASER FEEL slider.)

Important: The TIP FEEL or ERASER FEEL slider overrides the detail pressure settings. If you customize the detail settings, then drag the slider, your detail settings will be removed.

Drag the slider to select a pressure sensitivity setting. If you have a soft touch and want to achieve full pressure without having to apply full force to your pen, choose a softer setting.

Drag the slider to adjust the click threshold level. This setting determines the amount of force required to generate a tip click.



The PROFILE graphically displays the selected pressure SENSITIVITY curve and CLICK THRESHOLD settings.

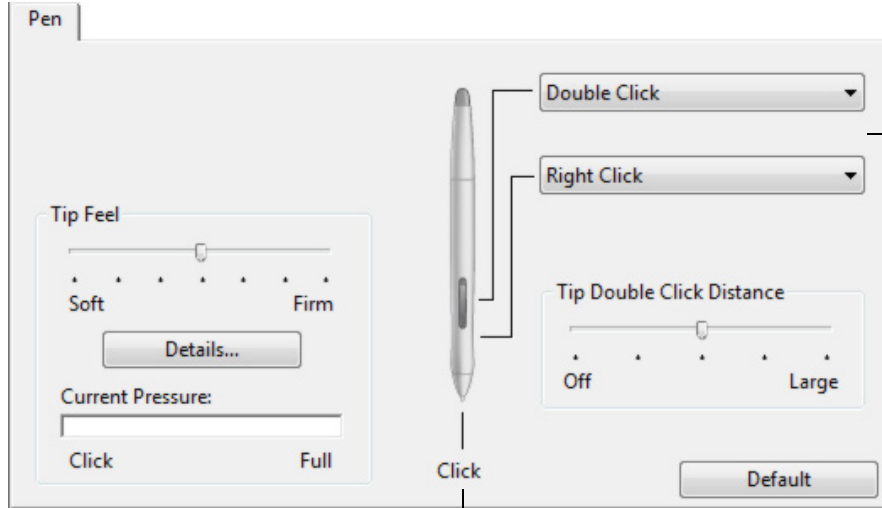
A curve that increases quickly makes the pen feel more sensitive.

Using your pen tip or eraser, make several strokes within the box to test the results of your changes.

CUSTOMIZING PEN BUTTONS

Select the PEN tab to change the functions assigned to the side switches and tip of your pen.

Note: Some product configurations may include a pen without side switches.



Select the button function to perform when pressing the upper or lower side switch.

When you bring the pen tip within 5 mm (0.20 inch) of the tablet surface without touching the tablet and press the upper or lower side switch, the selected function occurs.

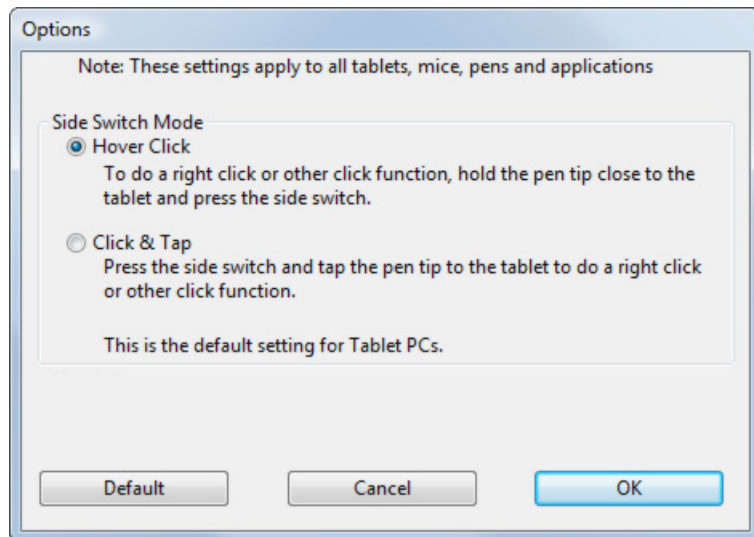
Hint: To make double-clicking easier, set the side switch to double-click automatically by selecting DOUBLE CLICK.

Double-click here to change the function assigned to the pen tip.

- At least one pen button should be set to the CLICK function.
- The tip must be set to CLICK in order to draw in most graphics applications.

Note: You can change the SIDE SWITCH MODE to best fit the way you like to use the pen when making right-clicks or other click functions. To access the SIDE SWITCH MODE settings, click on the OPTIONS... button at the bottom of the control panel. In the OPTIONS dialog box that appears:

- Select HOVER CLICK to perform click functions without touching the pen tip to the tablet surface.
- When CLICK & TAP is selected, you must press the side switch while touching the pen tip to the tablet surface in order to perform a click function. CLICK & TAP enables the precise placement of your click functions, and is the default setting for Tablet PCs.





BUTTON FUNCTIONS

The following options are available for pen or Radial Menu settings. Please note that not all options are available for all controls or pen display models.



CLICK. This option simulates a primary mouse button click. Be sure at least one button performs this function so you can always navigate and click.

DOUBLE CLICK. Simulates a double-click. For easier double-clicking, use this function instead of tapping twice with the tip of your pen.

MIDDLE CLICK. Simulates a middle mouse button click.

RIGHT CLICK. Simulates a right mouse button click, which displays a context menu.

CLICK LOCK. Simulates holding down the primary mouse button. Press the pen button once to initiate click lock. Press the button again to release click lock. Click lock is useful for dragging objects or selecting blocks of text.

4TH CLICK. Simulates a 4th mouse button click.

BACK. Simulates the BACK command in browser applications.

5TH CLICK. Simulates a 5th mouse button click.

FORWARD. Simulates the FORWARD command in browser applications.

PAN/SCROLL. Enables you to move a document or image in any direction within the active window using your Wacom pen.

APPLICATION DEFINED. Reports only the button number to the application. This is for applications, such as CAD programs, that have built-in tablet support.

DEFAULT. Returns a button to its default setting.

DISABLED. Disables the button function.

ERASE. Default setting for the eraser. See your hardware manual for information on using the eraser.

INK TOGGLE. (Macintosh.) Toggles the “write anywhere” function of Inkwell on and off. Inkwell automatically recognizes and converts your handwriting into text and inserts it into a document. Ink must be turned on for this function to work. See your Macintosh help for information on working with Inkwell.





KEYSTROKE... Enables you to simulate keystrokes.

MODE TOGGLE... Toggles between pen and mouse mode.

MODIFIER... Enables you to simulate modifier keys.

OPEN/RUN... Opens an application, file, or script.

PRESSURE HOLD. Locks the pressure at the current pressure level until the button is released. For example, you can paint with pressure sensitivity until you reach the brush size that you like. You can then press the button and continue painting with the same size brush until the button is released.

PRECISION MODE. Changes the mapping around the current pen tip position such that you must move the pen twice as far for the screen cursor to cover the same distance on the display screen. To activate, press and hold a pen button to which the function has been assigned. Releasing the button returns to normal mapping.

DISPLAY TOGGLE. For multiple monitor systems. Enables you to toggle the screen cursor between the pen display and your other displays. When selected, your product can be used either as a pen display (the screen cursor is positioned at the pen tip location) or as a standard Wacom tablet (the screen cursor can be moved across the entire desktop or additional displays). See [working with Display Toggle](#) for more information.

RADIAL MENU. Displays a [Radial Menu](#) on your screen. Each level of the hierarchical menu consists of eight menu slices which may contain various features and options to choose from.

JOURNAL. (Windows Vista and Tablet PC systems that include Microsoft Journal.) Opens Microsoft Journal.

TABLET PC INPUT PANEL. (Tablet PCs and Windows Vista systems that support the Tablet PC Input Panel.) Opens the Tablet PC input panel when you press a pen button set to this function.

SHOW DESKTOP. Minimizes all open windows to display a clean desktop.

SWITCH APPLICATION. Brings up the application switching dialog with focus on the next open application. On Windows Vista systems running Aero, Flip 3D will be activated with focus on the next open applications.

EXPOSÉ. (Macintosh.) Tiles all open windows.





- **KEYSTROKE....** Enables you to simulate keystrokes. Selecting this option displays the DEFINE KEYSTROKE dialog box where you can enter a keystroke or keystroke sequence to play back.

You can manually enter a keystroke or keystroke combination in the KEYS entry box. Keystroke combinations can include letters, numbers, function keys (such as F3) and modifier keys (such as SHIFT, ALT, or CTRL for Windows, or SHIFT, OPTION, COMMAND, and CONTROL for Macintosh).

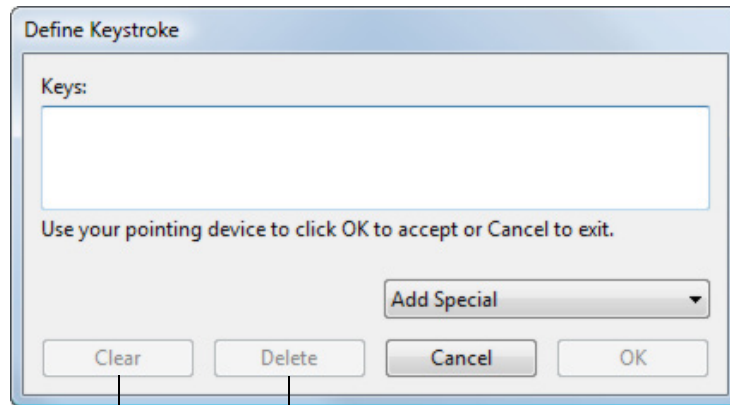
You can also select special keystrokes or keystroke combinations from the ADD SPECIAL drop-down menu. When you make a selection it is added to the KEYS entry box.

After defining a keystroke or keystroke sequence, click OK.

Important: Because the ENTER (Windows) and RETURN (Macintosh) keys can be selected as a defined keystroke, they cannot be used to select OK. You must use your pen to click on the OK button.

If prompted, enter a name for the keystroke definition. The name will be displayed with the respective control or in the Radial Menu, as applicable.

You can create different keystroke functions for different applications. See [application-specific settings](#) for more information.



Deletes only the last entry in the keystroke entry box.

Clears the keystroke entry box.



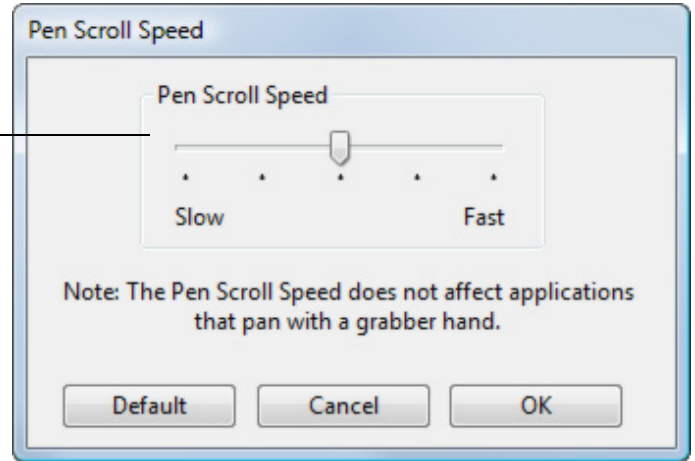


- **PAN/SCROLL.** Lets you move a document or image in any direction within the active application window by pressing a button set for PAN/SCROLL and then dragging with the pen tip across the tablet's active area.

When you select PAN/SCROLL, the PEN SCROLL SPEED dialog box prompts you to set a scrolling speed that will be used in applications that do not support grabber hand (pixel-level) panning within a document or image.

As you move the pen tip, the document or image is repositioned to follow the direction of pen movement on the tablet. Release the button or lift the pen tip from the tablet surface when you are done.

In some application windows the document will precisely follow the screen cursor as you move the pen tip, while in others it will simply move in the same general direction as the screen cursor.

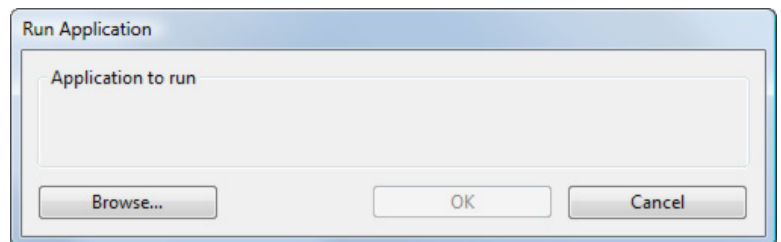


- **OPEN/RUN....** Opens a dialog box where you can select a specific application, file, or script to launch.

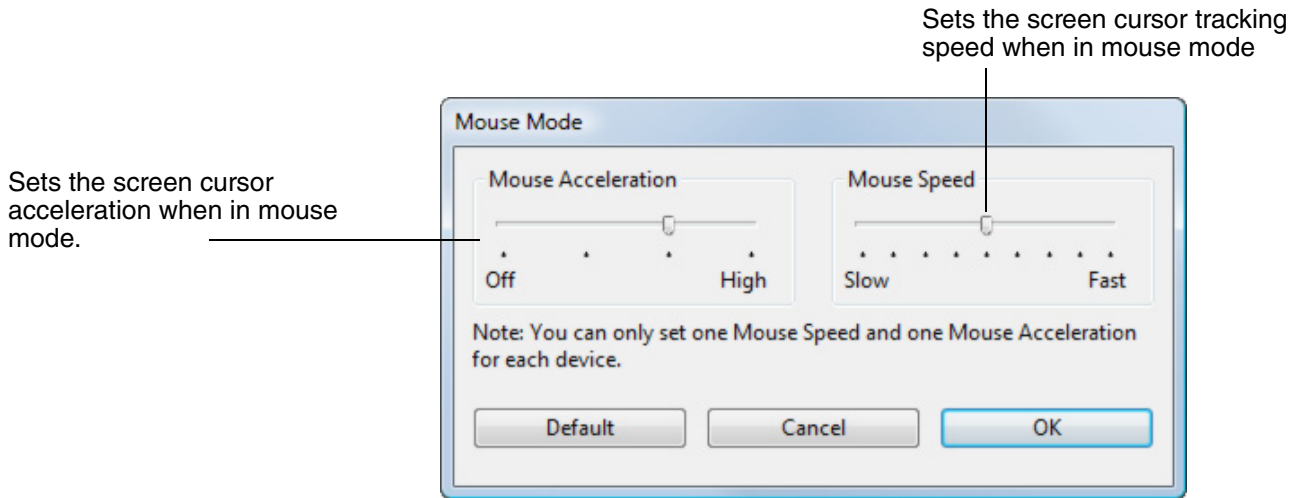
Click BROWSE... to locate an application, file, or script to launch. The selection you make appears in the APPLICATION TO RUN box.

Click OK to accept the selection. The dialog box will close and the OPEN/RUN... option you have selected will be assigned as your pen button option.

If your selection is for the Radial Menu, it will be displayed in the Radial Menu.

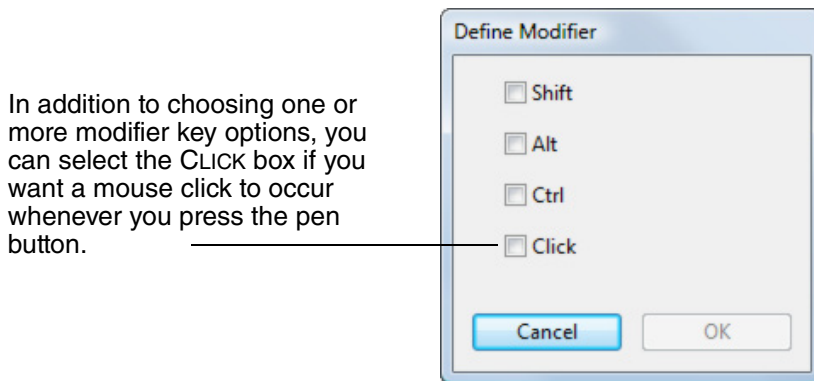


- **MODE TOGGLE....** Toggles between pen mode and mouse mode. When first setting a pen button to MODE TOGGLE..., the MOUSE MODE dialog box is displayed where you can adjust the mouse acceleration and speed.



Note: Mouse mode settings can be accessed from a number of different locations within the control panel. However, for each pen and application that you are customizing, only one MOUSE ACCELERATION and SPEED setting can be made.

- **MODIFIER....** Enables you to simulate modifier key(s) (such as SHIFT, ALT, or CTRL for Windows, or SHIFT, OPTION, COMMAND, and CONTROL for Macintosh). Many applications use modifier keys to constrain the size or placement of objects.





USING THE PEN DISPLAY WITH OTHER MONITORS

When you are working with the pen display and additional monitors on the same system, the screen cursor movement on the standard monitors will depend on your system configuration.

If a second monitor is connected in mirror mode, both the pen display and the other monitor will show the identical images and screen cursor movement.

If you are using the pen display with other monitors in extended monitor mode, you have several options for navigating on the other monitors:

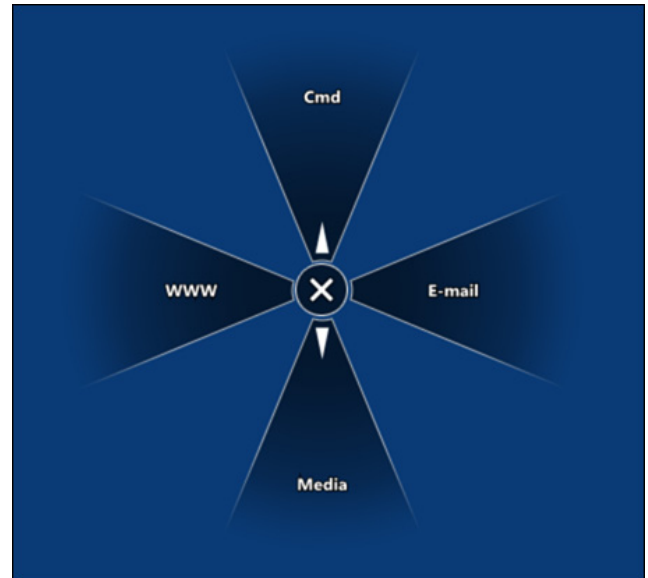
- Set a pen side switch to the DISPLAY TOGGLE function. You can then press the button to toggle the screen cursor between the pen display and your other displays. For example, your product can be used as a pen display (the screen cursor is positioned at the pen tip location) or toggled for use as a standard Wacom tablet (the screen cursor can be moved across the entire desktop or additional displays). See [working with Display Toggle](#) for more information.
- Set one of the pen side switches to MODE TOGGLE. You can then quickly switch between pen mode for working on the pen display and mouse mode for working on the other monitors.



USING AND CUSTOMIZING THE RADIAL MENU

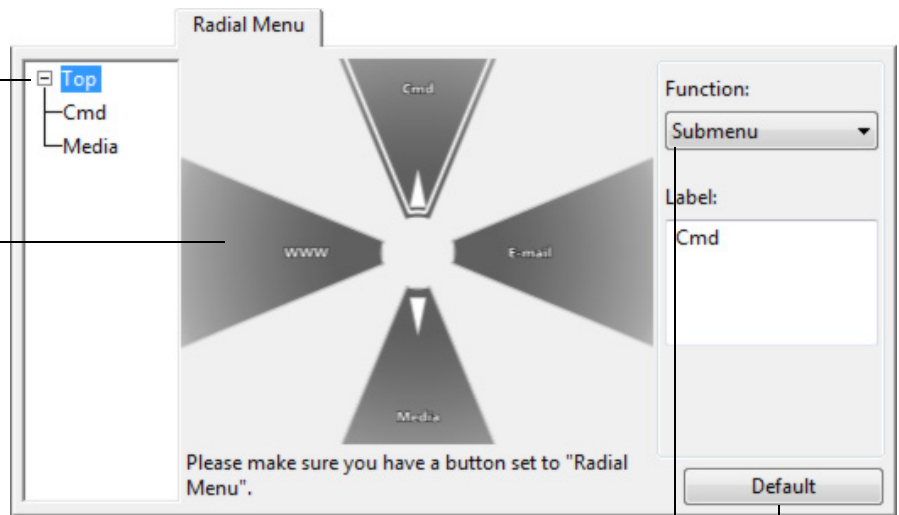
To display the Radial Menu, set a pen button to the RADIAL MENU function. Whenever you press that button, the Radial Menu is displayed. The menu will extend over the entire desktop.

- The hierarchical Radial Menu appears in circular format. Each level of the menu consists of eight control slices which may contain various features and options to choose from.
- Select an available option by clicking on it within the Radial Menu.
- The menu closes after you make a selection. To close the Radial Menu without making a selection, click on the 'X' located at the center of the menu or on a control slice that has no function assigned to it. You can also again press the button used to display the menu.



Use the RADIAL MENU tab to customize the available functions on the Radial Menu.

1. Select a menu or submenu to customize.
2. Select a control slice for which to customize settings.
3. Choose the function(s) to perform.



Returns the currently displayed Radial Menu layout to its default values.

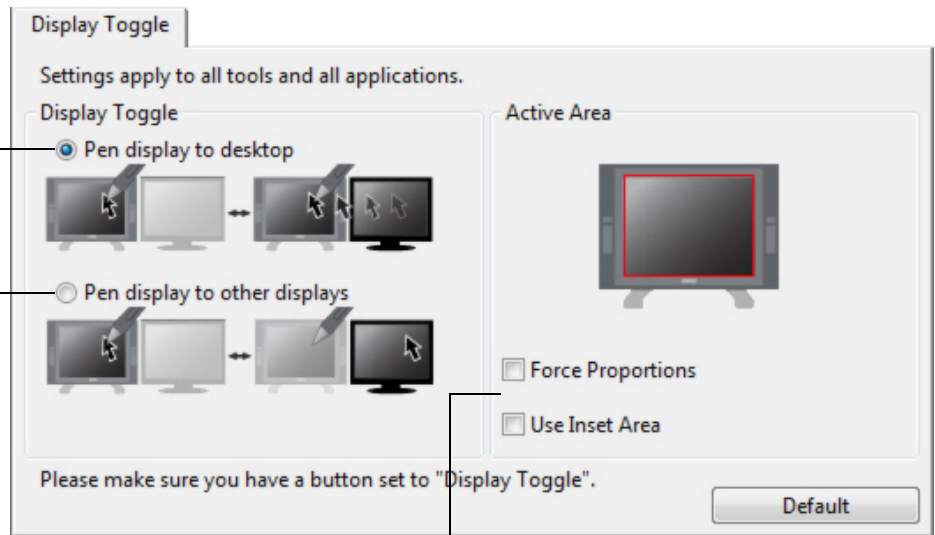


WORKING WITH DISPLAY TOGGLE

DISPLAY TOGGLE is available only on multiple monitor systems. The feature allows you to use your pen on the pen display tablet to navigate the screen cursor to any display on your system. After setting a pen side switch to the DISPLAY TOGGLE function, you can then press that button to toggle the screen cursor between the pen display tablet and your other displays. For example, your product can be used as a pen display where the screen cursor is positioned at the pen tip location, or toggled for use as a standard Wacom tablet where the screen cursor can be moved across the entire desktop or additional displays.

When you open the Wacom Tablet control panel and the pen display is the selected tablet, the DISPLAY TOGGLE tab will be available if the system has two or more displays. The DISPLAY TOGGLE tab enables you to define how the tablet mapping will be applied to each toggled display.

- When PEN DISPLAY TO DESKTOP is selected and you press a pen button that has been assigned the DISPLAY TOGGLE function, the screen cursor will toggle from your pen display to the entire system desktop. Pressing the button a second time returns the screen cursor to the pen display.
- When PEN DISPLAY TO OTHER DISPLAYS is selected and you press the pen button, the screen cursor is toggled from your pen display to another active pen display or monitor. If additional displays are attached to the system, the screen cursor will toggle to each display in turn until it returns to the pen display from where the initial toggle began.



Important: If you are using application-specific settings with DISPLAY TOGGLE, make sure that each customized application in the APPLICATION list (including ALL OTHER) has a pen button that is assigned to DISPLAY TOGGLE.

ACTIVE AREA options enable you to determine the size of the pen display tablet's active area where the pen is functional. When you make a selection, the red indicator updates to illustrate your choice.

- FORCE PROPORTIONS adjusts the size of the tablet's active area to maintain correct vertical and horizontal proportions between the pen display and the entire desktop or newly mapped-to display. Depending on your settings, some portions of the tablet active area may no longer be usable when this option is selected.

When deselected, the correct scale or proportions are not maintained – for example, drawing a circle on the pen display may create an ellipse on a mapped-to display screen.

- USE INSET AREA limits the tablet's active area to a sizing of 6 x 8 inches. If FORCE PROPORTIONS is also selected, this sizing may be less. When deselected, as much as possible of the entire tablet active area will be used for tablet-to-display mapping.





APPLICATION-SPECIFIC SETTINGS

You may wish to customize your pen for use with a particular application. For example, you may want a firm pen tip pressure setting in one application and a soft pressure setting in another. The APPLICATION list enables you to add an individual application to the list and then customize your settings for that application.

- **When no application-specific settings have been created** and the pen is selected from the TOOL list, the APPLICATION list displays the ALL icon containing tool settings that apply to all of your applications. In the example below, no application-specific settings have been added for the PEN so the ALL icon is displayed and the PEN will have the same settings in all applications.



- **When application-specific settings are added** to the APPLICATION list, the ALL icon changes to ALL OTHER, and an application icon is displayed for the newly added application(s). In the following example, application-specific settings have been added for the PEN.



In the example above, if you select the ALL OTHER icon and make changes to the tab settings, your changes will apply to the PEN in all applications except those which you have added to the APPLICATION list. If you select an application icon and make changes to the tab settings, your changes will apply to the PEN only while you are using that application.

When you create application-specific settings, you are creating a separate group of settings for the selected pen and application. See the following sections for additional details:

[Creating an application-specific setting](#)

[Changing application-specific settings](#)

[Removing application-specific settings](#)



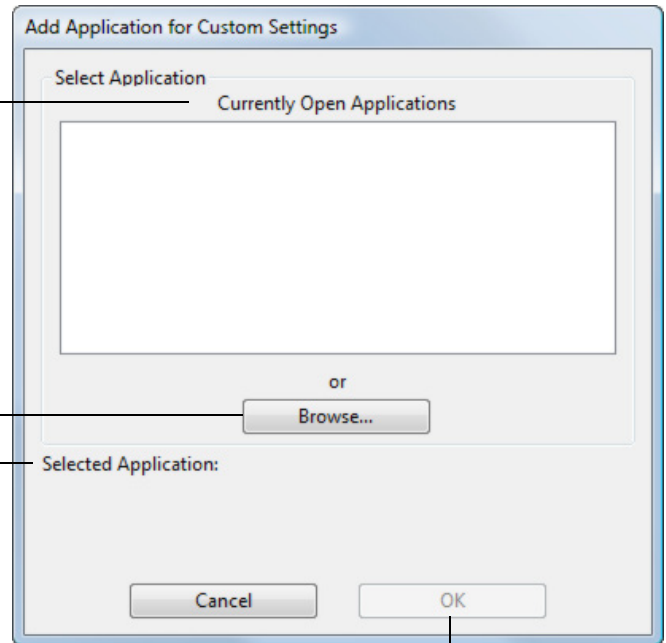


CREATING AN APPLICATION-SPECIFIC SETTING

To create an application-specific setting, first choose the pen display and pen for which you want to create an application-specific setting. Then click on the APPLICATION list's [+] button to display the ADD APPLICATION FOR CUSTOM SETTINGS dialog box.

Choose from one of two methods to select an application:

- Open the application for which you want to create custom settings, and then select that application from the CURRENTLY OPEN APPLICATIONS box.
- BROWSE to select the executable file of any application installed on your computer.



Your selection is added to the SELECTED APPLICATION box where the name of the selected application is displayed.

Click OK to complete the process.

Note: If two programs have the same executable file name, they will share the same customized settings.

After adding an application, its icon appears in the APPLICATION list whenever the pen is selected in the TOOL list. Select the application and then customize the control panel tab settings for your pen and the selected application.

Once you have created application-specific settings, applications that have not been customized in this manner will use the TOOL settings for ALL OTHER.

Tip: First customize settings for one application. When you feel comfortable with the process, you can create more application-specific settings.





CHANGING APPLICATION-SPECIFIC SETTINGS

To change pen settings for a specific application, select PEN and the application and then customize the tab settings.

REMOVING APPLICATION-SPECIFIC SETTINGS

To remove an application-specific setting:

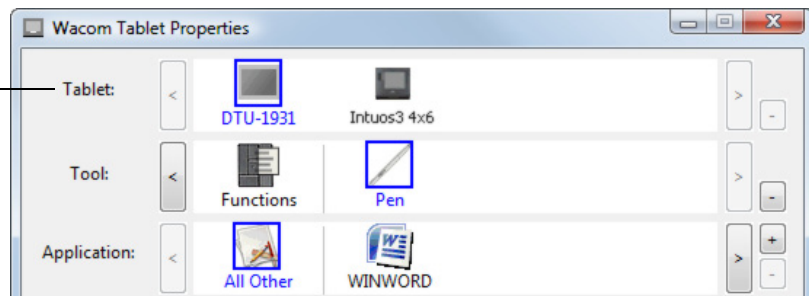
1. In the TOOL list, select the PEN. Then, in the APPLICATION list select the application you want to remove from the list.
2. Click on the APPLICATION list's [-] button. In the dialog box that appears, click DELETE to confirm your selection. The selected application is removed from the list, along with any custom pen settings that you may have created for it.

Hint: To quickly remove all application-specific settings from the pen, remove the PEN from the TOOL list. Then place the pen back on the pen display. The PEN will be added back to the TOOL list using the default settings.

INSTALLING MULTIPLE TABLETS

The TABLET list displays an icon for any supported tablet that has been detected on your system, and allows you to select the tablet for which your changes will apply.

Select a tablet icon for which to customize pen and application settings.



To add a new tablet, connect it to your computer.

- For USB tablets, the system searches the USB ports. When the new tablet is found, it is automatically initialized.
- If multiple tablets are installed, the tablet used to open the Wacom Tablet control panel is selected as the default tablet.

To remove one of multiple tablets from the driver, in the Wacom Tablet control panel select the tablet to be deleted and click on the [-] button next to the TABLET list. Note that you will need to restart your computer before you can re-add the tablet to the driver.





GLOSSARY

Active area. The area of the pen display tablet where your pen is detected.

Application-specific settings. Pen display tool and tablet settings that have been customized for individual applications. The Wacom Tablet control panel enables you to customize the pen to behave uniquely in different applications. Your application-specific settings are in effect whenever you use the application. See also [application-specific settings](#).

Aspect. The ratio between the vertical and horizontal dimension of the active area of the pen display tablet.

Click force. The amount of force you must apply to the tip of your pen for a click to occur.

Double-click assist. A function of the Wacom Tablet control panel that makes it easier to double-click by setting the size of the double-click distance.

Double-click distance. The maximum distance (in screen pixels) that the cursor can move between clicks and still be accepted as a double-click. Increasing the double-click distance makes double-clicking easier, but may cause a delay in brush strokes in some graphics applications.

Double-click speed. The maximum time that can pass between clicks and still be accepted as a double-click.

Eraser-aware application. A software application that has built-in support for the pen eraser. These applications take advantage of the eraser in different ways, depending on what makes sense for the application.

Journal. A Microsoft Windows application that electronically simulates a physical journal pad, but with the advantages of digital note taking. For example, you can create quick sketches and jot handwritten notes that can be converted to text and sent on to colleagues for digital mark-up. Journal includes a variety of pen, marker, and highlighter tools, plus an eraser that is easily activated by the eraser end of your Wacom pen. Additionally, your handwritten content is searchable within Journal.

Modifier. Modifier keys include SHIFT, ALT, and CTRL for Windows, or SHIFT, CONTROL, COMMAND, and OPTION for Macintosh. You can customize your pen buttons to simulate a modifier key.

Mouse acceleration. A setting that allows you to adjust the screen cursor acceleration when using mouse mode.

Mouse mode. A method for positioning the screen cursor. When you place the pen on the tablet, you can move the screen cursor with a “pick up and slide” motion similar to using a traditional mouse. This is known as relative positioning. See also [pen mode](#).

Mouse speed. A setting that allows you to adjust the speed at which your screen cursor moves when using mouse mode.

Nib. The replaceable pen tip.





Pen mode. A method of positioning the screen cursor. Wherever you place your pen on the pen display tablet, the screen cursor will jump to the corresponding point on the screen. This is known as absolute positioning, and is the default setting for the pen. Also, pen mode allows you to quickly position the screen cursor without having to first find it and then move it across the desktop. See also [mouse mode](#).

Pixel. The smallest unit of measure on your display screen.

Pressure sensitive. A quality of the Wacom pen tip and eraser that senses the amount of pressure being applied. This is used to create natural-looking pen, brush, and eraser strokes in applications that are pressure sensitive.

Pressure-sensitive application. Any application that supports pressure-sensitive input.

Proximity. The height above the pen display tablet [active area](#) where the pen is detected.

Radial Menu. A hierarchical menu (in radial format). Each level of the menu consists of eight menu slices which may contain various features and options to choose from. You can customize the buttons of your pen to display this menu.

Screen cursor. The pointer on the display screen. Screen cursors come in different shapes (such as an I-beam, arrow, or box), depending on which application you are running.

Tablet PC Input Panel (TIP). The Microsoft Windows Vista Tablet PC Input Panel enables you to use your Wacom pen to create handwritten notes or work with an on-screen keyboard. The Input Panel dynamically converts your handwriting to text. The information you create can then be inserted into other documents, spreadsheets, or illustrations.

USB. Universal Serial Bus. A hardware interface standard for connecting computer peripheral devices. USB ports support hot-plugging, which allows you to connect or disconnect a USB device without turning off your computer.

Wintab. An interface standard used by Windows applications for receiving tablet information. The pen display supports all Wintab-compatible applications under Windows.





INDEX

About the manual	2	Display Toggle, working with	19
Application-specific settings		Double-click, customizing	8
changing	22	Eraser feel, customizing	9
creating	21	advanced	10
removing	22	Features, control panel	5
working with	20	Functions, button	12
Button functions	12	Installing multiple tablets	22
Calibrating, pen display	7	Manual, about	2
Control panel		Monitors, using pen display with other	17
features	5	Multiple tablets, installing	22
lists	6	Pen buttons, customizing	11
opening	4	Pen, customizing	8
settings	6	Radial Menu	
tabs	6	customizing	18
Customizing		using	18
double-click	8	Removing settings	22
eraser feel	9	Settings	
advanced	10	control panel	6
pen	8	removing	22
pen buttons	11	Tip feel, customizing	8
Radial Menu	18	advanced	10
tip feel	8		
advanced	10		





Wacom Pen Display

Software User's Manual

Version 1.0, June 12, 2008

Copyright © Wacom Co., Ltd., 2008

All rights reserved. No part of this document may be reproduced except for your express personal use.

Wacom reserves the right to revise this publication without obligation to provide notification of such changes.

Wacom does its best to provide current and accurate information in this document. However, Wacom reserves the right to change any specifications and product configurations at its discretion, without prior notice and without obligation to include such changes in this document.

The above date indicates the date when the Wacom Pen Display Software User's Manual was prepared by Wacom. However, the date of release to the users of the "Manual" is simultaneous with the introduction into the market of the applicable Wacom product.

DuoSwitch is a trademark, and Wacom is a registered trademark of Wacom Co., Ltd.

Adobe and Reader are either registered trademarks or trademarks of Adobe Systems Incorporated in the United States and/or other countries. Microsoft, Windows, and Vista are either registered trademarks or trademarks of Microsoft Corporation in the United States and/or other countries. Apple, the Apple logo, and Macintosh are registered trademarks of Apple Computer, Inc., registered in the U.S. and other countries.

Any additional company and product names mentioned in this documentation may be trademarked and/or registered as trademarks. Mention of third-party products is for information purposes only and constitutes neither an endorsement nor a recommendation. Wacom assumes no responsibility with regard to the performance or use of these products.

