



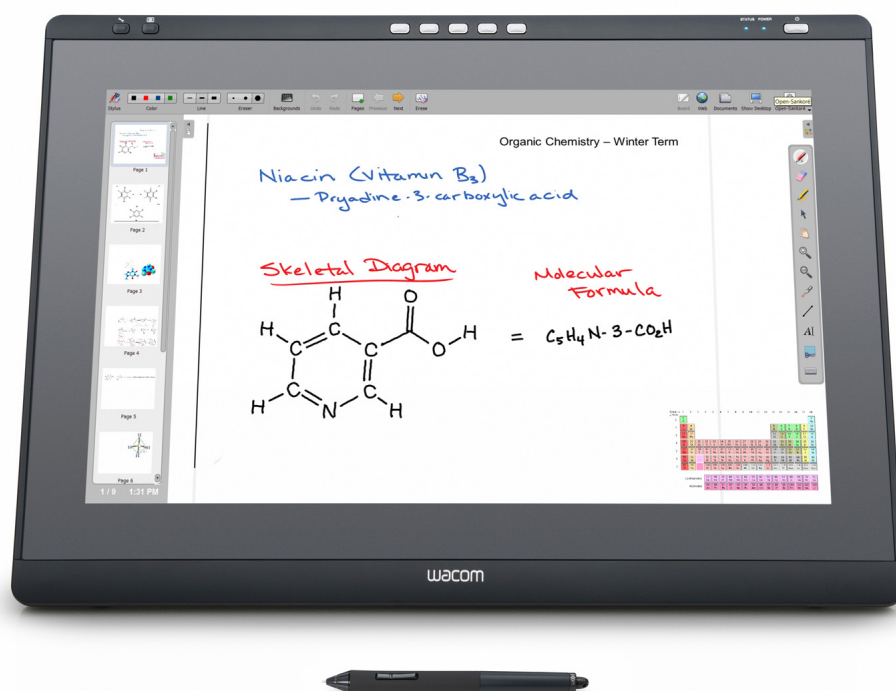
USER'S MANUAL

Interactive Pen Display

Model:

DTK-2241 Pen Display

DTH-2242 Pen and Touch Display



[Installation](#)

[Using the pen](#)

[Working with Display Toggle](#)

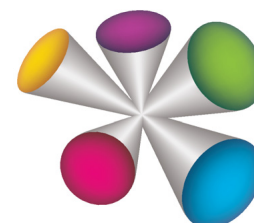
[Customizing the ExpressKeys](#)

[Application-specific settings](#)

[Troubleshooting](#)

[Product specifications](#)

[Technical support options](#)





Interactive pen display

Interactive pen and touch display

User's Manual

Version 1.0, C0413

Copyright © Wacom Co., Ltd., 2013

All rights reserved. No part of this manual may be reproduced except for your express personal use.

Wacom reserves the right to revise this publication without obligation to provide notification of such changes.

Wacom does its best to provide current and accurate information in this manual. However, Wacom reserves the right to change any specifications and product configurations at its discretion, without prior notice and without obligation to include such changes in this manual.

The above year indicates when this manual was prepared. However, the date of release to the users of the manual is simultaneous with the introduction into the market of the applicable Wacom product.

DuoSwitch is a trademark, and Wacom is a registered trademark of Wacom Co., Ltd.

Adobe, Reader and Photoshop are either registered trademarks or trademarks of Adobe systems Incorporated in the United States and/or other countries. Microsoft, Windows, and Vista are either registered trademarks or trademarks of Microsoft Corporation in the United States and/or other countries. Apple, the Apple logo, and Macintosh are trademarks of Apple Computer, Inc., registered in the U.S. and other countries.

Any additional company and product names mentioned in this documentation may be trademarked and/or registered as trademarks. Mention of third-party products is for informational purposes only and constitutes neither an endorsement nor a recommendation. Wacom assumes no responsibility with regard to the performance or use of these products.





CONTENTS

About the manual	5	Control panel overview	39
Navigating the manual	6	Calibrating the pen display	41
YOUR INTERACTIVE PEN DISPLAY	7	Customizing the pen	42
Precautions	7	Adjusting tip feel and double-click	42
Pen display features	8	Advanced tip pressure settings	43
Front view	8	Customizing pen buttons	44
Rear view	9	Customizing the ExpressKeys	45
Adjusting display incline	10	Using and customizing the Radial Menu	46
Pen features	11	Button functions	47
Pen Holder and Tether	11	Working with Display Toggle	51
INSTALLATION	12	Application-specific settings	52
System requirements	12	Creating an application-specific setting	53
Step 1: Display installation	13	Changing application-specific settings	54
LCD monitor cabling diagram	14	Removing application-specific settings	54
Step 2: Pen tablet installation	17	TROUBLESHOOTING	55
USB cable installation	17	Testing the interactive pen display	56
Software installation	18	Testing your pen	57
WORKING WITH THE INTERACTIVE PEN DISPLAY	19	Display troubleshooting	58
Ergonomics	19	General display problems	58
Using the pen	20	VGA problems	60
Holding the pen	20	Pen tablet troubleshooting	61
Positioning	20	General problems	61
Clicking	21	Windows-specific problems	65
Dragging	21	Macintosh-specific problems	66
Using the side switch	22	Technical support options	68
Working with pressure sensitivity	22	Obtaining driver downloads	69
Working with multiple monitors	22	APPENDIX	70
Adjusting the display	23	Caring for the interactive pen display	70
Factory presets, auto-sync, and user settings	23	Replacing the pen tip	71
Using the ExpressKeys	24	Using an alternate mount or stand	72
On Screen Display (OSD) settings	24	Uninstalling the interactive pen display	73
THE MULTI-TOUCH EXPERIENCE: DTH-2242	26	Managing preferences	74
Navigating with multi-touch	26	Installing multiple tablets	75
Customizing multi-touch	33	Pen and digital ink capabilities in Windows	76
Setting multi-touch options	34	About the Windows Tablet PC Input Panel	77
Choosing standard multi-touch functions	35	Product information	78
Choosing custom multi-touch functions	36	Product specifications	78
Testing multi-touch	36	Licenses and Warranties	78
Disabling multi-touch	37	Ordering parts and accessories	78
Power saving	37	Warranty Service in the U.S.A. and Canada	79
CUSTOMIZING THE PEN DISPLAY	38	Warranty Service Outside of the U.S.A. and Canada	79
Opening the control panel	38	Wacom Technical Support in Asia Pacific (except	





Japan and China)	79
GLOSSARY	80
INDEX	82
Wacom international offices	85





ABOUT THE MANUAL

This document provides quick access to information about your interactive pen display. Click on a navigation button or highlighted word to move through the document. The information is common to Windows and Macintosh computers. Windows screen captures are shown, unless otherwise noted.

If you are new to electronic documentation, read [Navigating the manual](#).

- Go directly to [Contents](#) or [Index](#) topics by clicking on them.
- SMALL CAPITAL LETTERS identify the names of keyboard keys, dialog boxes, and control panel options.
- You can use your viewer zoom-in tool to increase the size of the page on your display screen.
- The following information is not included with this product: information about your specific computer hardware or operating system, or information about your application software. Your best source for this information is the set of manuals and discs that came with your hardware, operating system, or application.
- Many applications have built-in support for pen display features (such as pressure sensitivity). Visit Wacom's website to find a listing of applications that support these features (see [Product information](#)).
- For information on how best to use pen display features within a specific application, see the instructions in that application's manuals.

Wacom's philosophy is to continually improve all of its products. As a result, engineering changes and improvements are made from time to time. Therefore, some changes, modifications, and improvements may not be covered in this document.





NAVIGATING THE MANUAL

Use the navigation controls to move through the manual:



Go to front page.

Contents

Go to table of contents.

Index

Go to index.



Go back to previous view.



Page back, or page forward.

Adobe® Reader® provides additional tools for using and printing the manual. See the Adobe Reader help for more information.





YOUR INTERACTIVE PEN DISPLAY

This manual describes the [Installation](#) and use of interactive pen displays DTK-2241 and DTH-2242. The DTH-2242 also features interactive multi-touch capabilities.

The Wacom tablet control panel enables you to customize your pen, pen display settings, and multi-touch functions. To learn more, see [Customizing the pen display](#).

[Pen display features](#)

[Adjusting display incline](#)

[Pen features](#)

The following information is not included with this product: information about your specific computer hardware or operating system, or information about your application software. Your best source for this information is the set of manuals and discs that came with your hardware, operating system, or application.

Note: Not all product models are available in all regions.

For illustrations of the items included with your pen display, see the Quick Start Guide included in the product box.

PRECAUTIONS

To ensure the safe usage of your product, be sure to follow all instructions, cautions, and warnings found within this manual. Failure to do so could cause the loss of data or damage to your computer. Failure to do so could also void your warranty, in which case Wacom shall have no responsibility to repair or replace the product. For detailed information on safe setup and use of your pen display, refer to the Important Product Information (IPI) provided with the product.



Warning

This symbol indicates an item that, if disregarded, may lead to loss of human life or serious injury.



Caution

This symbol indicates an item that, if disregarded, may lead to human injury or damage to personal property.

Exercise due care and diligence whenever engaging in a described action.



PEN DISPLAY FEATURES

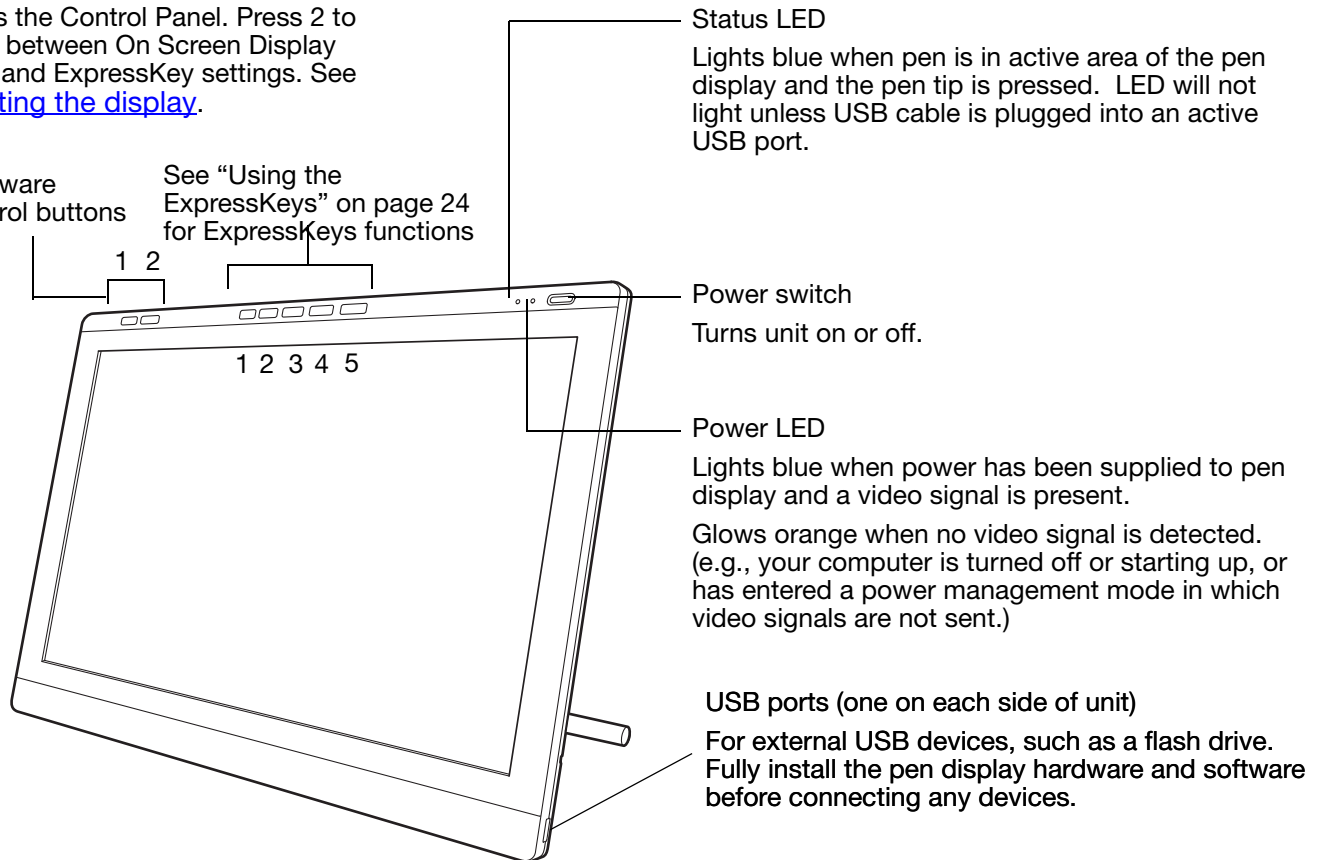
Familiarize yourself with the features and components of your product.

FRONT VIEW

The buttons and features of your pen display are illustrated below.

Hardware Control buttons: Press 1 to access the Control Panel. Press 2 to toggle between On Screen Display (OSD) and ExpressKey settings. See [Adjusting the display](#).

Hardware Control buttons
See "Using the ExpressKeys" on page 24 for ExpressKeys functions



Status LED

Lights blue when pen is in active area of the pen display and the pen tip is pressed. LED will not light unless USB cable is plugged into an active USB port.

Power switch

Turns unit on or off.

Power LED

Lights blue when power has been supplied to pen display and a video signal is present.

Glow orange when no video signal is detected. (e.g., your computer is turned off or starting up, or has entered a power management mode in which video signals are not sent.)

USB ports (one on each side of unit)

For external USB devices, such as a flash drive. Fully install the pen display hardware and software before connecting any devices.

See "Using the ExpressKeys" on page 24 for descriptions and a table of default ExpressKey and OSD functions.



REAR VIEW

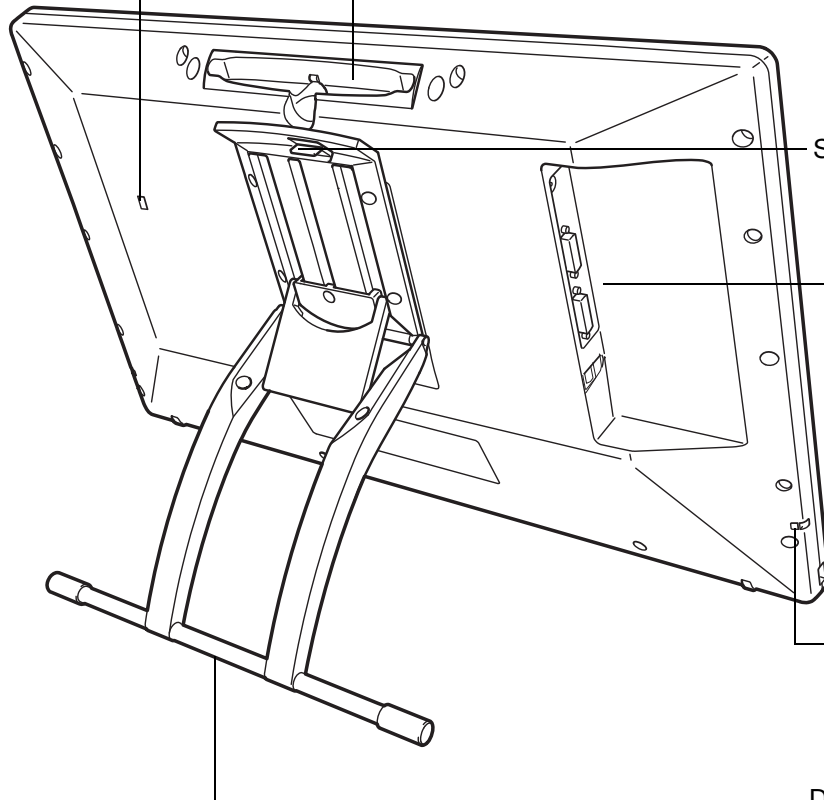
Security slot

Allows easy attachment of a security cable.

Pen storage compartment

Store by inserting one end of the pen into either side of the compartment. Then gently press other end of pen into the compartment. Take care not to damage the pen nib.

Remove the pen by placing your finger underneath the pen and pulling the pen out of the compartment.



Stand adjustment lever

Connection panel

- Power connector
- DVI-I out connector
- DVI-I in connector
- USB connector

Pen tether attachment points (2)

If using a pen tether, connect it to an attachment point located on either side of unit.

Display stand

Adjusts the tilt angle of the unit. See [Adjusting display incline](#).

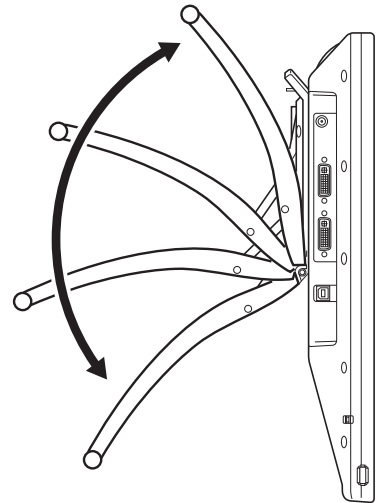
Important: Do not lift the unit by the stand; this may damage the stand mechanism. When lifting or moving the pen display, always grasp the main body casing.

Always store the interactive pen display on a stable surface or in its original packing carton when not in use. Be sure to adjust the stand to the low tilt position before packaging. If you do not close the stand, the notched mechanism may be damaged during transportation and storage.



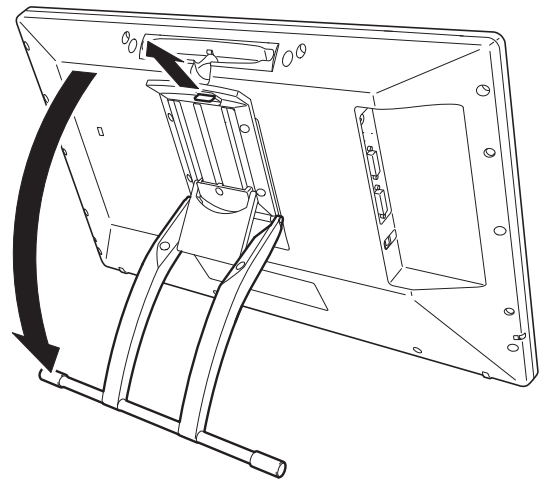
ADJUSTING DISPLAY INCLINE

- To open the display stand, pull up on the adjustment lever and swing stand out to desired incline. Release lever to lock the stand in place.
- To close the stand, pull up on the adjustment lever and gently move stand back into closed position until the latch catches. Release lever to lock the stand in place.



Caution

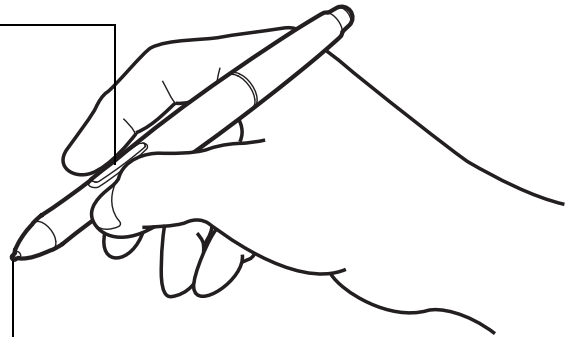
Avoid catching your finger in the gap of the movable portion of the stand.



PEN FEATURES

DuoSwitch (side switch): Be sure the programmable switch is in a convenient location where you can toggle it with your thumb or forefinger but not accidentally press it while using the pen. You can use the switch whenever the pen tip is within proximity of the display screen surface; you do not need to touch the pen tip to the display surface.

Toggle the switch in either direction to activate the button functions. By default, the upper switch is set to DOUBLE CLICK and the lower switch is set to RIGHT CLICK.



Pen tip (replaceable nib): The pen is activated as soon as it is brought within proximity (5 mm (0.2 inch)) of the pen display screen. This allows you to position the screen cursor without touching the pen tip to the display screen.

When pressure is applied to the pen tip, the pen simulates a primary mouse button click. Tip click pressure can be adjusted in the Wacom tablet control panel.

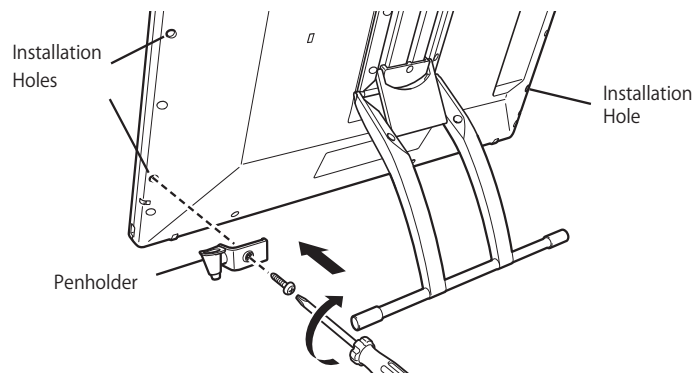
Notes:

When not in use, place the pen in the pen storage compartment or the pen holder, or lay it flat on your desk. To maintain the sensitivity of your pen, do not store the pen in a container where it will rest on its tip.

Important: Use only a pen specified for use with your pen display. Other pens may not function properly. Also, the pen tip is specifically designed for use with the pen display. If your pen display has a coated surface, the tips on other pens could damage the pen display screen.

PEN HOLDER AND TETHER

In addition to the pen holder compartment on the top of your pen display, a pen holder and pen tether are provided. Assembly of the pen holder is shown below. Attachment points for the tether are shown on page 9.





INSTALLATION

The computer treats the interactive pen display as two separate devices (the display and the pen tablet). Therefore, the installation process is completed in two stages:

- First install as a display.
- Then install as a pen tablet.

Both stages require hardware and software installations and adjustments. Carefully follow ALL instructions.

Important: You **MUST** install the Wacom driver software for correct pen-on-screen functionality.

[System requirements](#)

[Step 1: Display installation](#)

[Step 2: Pen tablet installation](#)

SYSTEM REQUIREMENTS

Make sure your computer meets the following minimum system requirements:

- **PC.** DTK-2241: Windows 8, Windows 7, Vista™, XP (32 and 64 bit). DTH-2242: Windows 8 or Windows 7 only. DVI or VGA connector, available USB port, and CD-ROM drive.
- **Macintosh.** OS X, v10.6 or greater. DVI or VGA connector, or Apple Mini DisplayPort to Dual-Link DVI adapter, available USB port, and CD-ROM drive.

The pen display supports both digital (DVI) and analog (VGA) video signals. If you are updating your video card, complete the video card installation before connecting the pen display. If you have another display that is compatible with your video card, you can use that display to verify the video card is operating correctly.

Although you can connect the pen display to either a DVI or VGA video card, connecting to a DVI video card generally results in optimum performance.

Notes:

You may be able to set up the pen display as a mirrored, extended, or independent display. When working with more than one monitor, the pen display will map to the monitors based upon how your system is configured. By default, if you are in mirror mode, the pen display will map to the entire space on each monitor. See your hardware and operating system documentation for details on configuring your system for use with multiple monitors.

A [Display Toggle](#) function is available for use with multiple monitor systems. This enables you to toggle the screen cursor between the pen display and your other monitors.

The pen display can be used alone or with another display. You may connect a second device, such as a monitor or LCD projector, to the DVI-I OUT port. When using this port, the second device will mirror the image on the pen display. Complete the pen display installation before connecting another device to the unit.



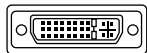


STEP 1: DISPLAY INSTALLATION

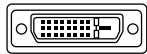
In this step, the interactive pen display is installed as a monitor on your system.

Important: Do not connect the USB data cable until instructed to do so. Never connect or disconnect the video or power cables while your computer or pen display are powered on. This can damage the display or video card.

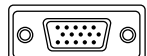
1. Turn off your computer.
2. If your computer has only one video connector, unplug your previous monitor or add a second video card. Determine if your computer has a digital (DVI) or analog (VGA) connector, and use the correct cable and connector for your connection to the pen display. See – A – in the [LCD monitor cabling diagram](#).
3. Making sure to tighten the connector thumbscrews, follow the below instructions for your video connector. See – B – in the [LCD monitor cabling diagram](#).



DVI-I connector



DVI-D
connector



VGA connector

For DVI operation, connect the supplied DVI-D to DVI-I video cable between the DVI-I IN connector located on the pen display unit and the DVI connector on your video card.

For VGA operation, connect the supplied VGA to DVI-I cable between the DVI IN connector located on the pen display unit and the VGA connector on your video card.

If connecting to a Mac Mini DisplayPort, you will need to obtain an appropriate adapter. For best results the Apple Mini DisplayPort to Dual-Link DVI Adapter is recommended. Adapters can be purchased at various retail outlets and through the online Apple Store.

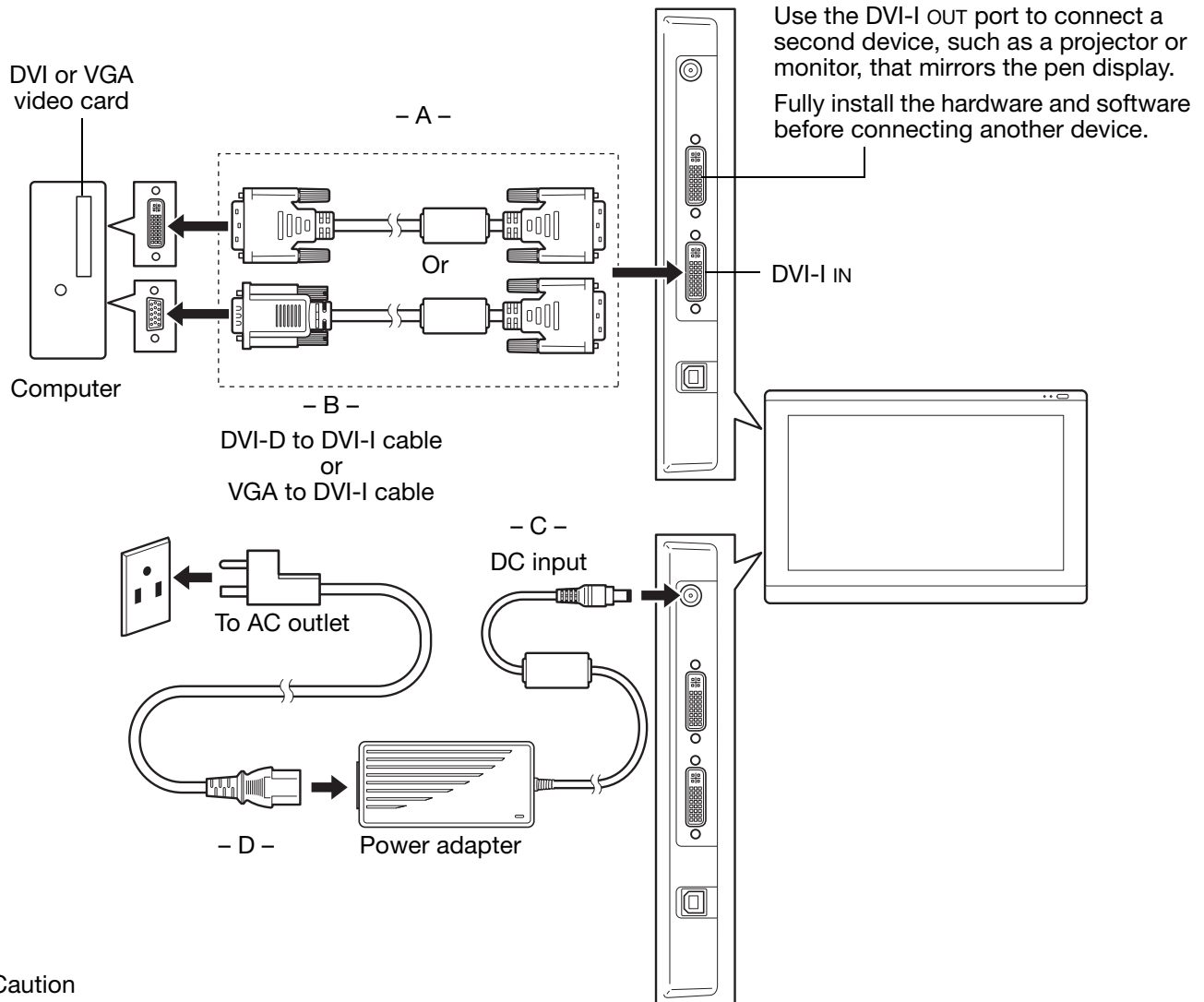
Connect the adapter between the pen display DVI cable and your Macintosh.

4. Connect the power adapter to the pen display. See – C – in the [LCD monitor cabling diagram](#).
5. Connect the adapter power cable and plug into an AC outlet. See – D – in the [LCD monitor cabling diagram](#).
6. Turn on the pen display. The power LED will light orange.





LCD MONITOR CABLING DIAGRAM



⚠ Caution

Make sure your video card has a DVI or VGA connector.

Only use a power adapter specified for use with your pen display; use of an improper power adapter may damage the unit.

Make sure the display refresh rate does not exceed the maximum vertical frequency that your interactive pen display can support. See the [Product information](#) for details.





7. Turn on your computer.

For Windows: The interactive pen display will automatically install as a default monitor. (Some models may not include a color profile.) To identify the unit as a pen display and install the color calibration profile:

A) Open the system CONTROL PANEL folder.

- For Windows 8, Windows 7, and Vista (DTK-2241 only), under APPEARANCE AND PERSONALIZATION select ADJUST SCREEN RESOLUTION.
- For Windows XP (DTK-2241 only), open the DISPLAY PROPERTIES control panel and select the SETTINGS tab.

If you have more than one monitor, click IDENTIFY MONITORS to determine which display corresponds to the pen display. Select the number corresponding to the pen display.

B) Click ADVANCED SETTINGS....

C) Select the MONITOR tab and click PROPERTIES.

D) Select the DRIVER tab and click UPDATE DRIVER.... An update driver dialog or Wizard will appear.

E) Insert the Installation CD. If the Wacom tablet installation menu displays, close it.

Windows 8, Windows 7 and Vista:

- Select BROWSE MY COMPUTER FOR DRIVER SOFTWARE.
- Enter the drive letter for the Installation CD and click NEXT.
- After installation is complete, close any open control panel windows.

Windows XP:

- The Wizard will ask if Windows can search for software. Choose NO, NOT THIS TIME and click NEXT.
- Select INSTALL FROM A LIST OR SPECIFIC LOCATION (ADVANCED), and click NEXT.
- Select DON'T SEARCH. I WILL CHOOSE THE DRIVER TO INSTALL and click NEXT.
- Select the pen display option and click HAVE DISK.... Enter the letter of your CD-ROM drive (e.g., E:\), and click OK.
- Follow the prompts. (If the HARDWARE INSTALLATION dialog box displays, click CONTINUE ANYWAY.) After installation is complete, click FINISH and close any open control panel windows.

For Macintosh, a color profile is added to your color management system during the driver software installation process. (Some models may not include a color profile.) To activate this color profile for use with the pen display, you may need to select the pen display profile in the system's ColorSync Utility control panel. For details, see the color management information in your operating system and application documentation.





8. As necessary, configure the display control panel settings for the proper size and color resolution. See the [Product information](#) for details about the maximum (native) resolution and other resolution sizes that can be used with your pen display. The display size and color resolution may be constrained by the capabilities of your video card.

Windows: If you are using the pen display as a secondary display, you may first need to enable the unit in your display properties control panel.

To fine-tune the display, see [Adjusting the display](#).

After the LCD monitor portion of the installation is working to your satisfaction, move on to [Step 2: Pen tablet installation](#).

For troubleshooting tips, see [Troubleshooting](#).

Notes:

Each interactive pen display LCD panel is produced under very stringent quality standards. Production techniques cannot guarantee an absolutely perfect display, and some panels may exhibit a certain number of pixels that show an incorrect color. See the [Product information](#) for more information.

If an image has fine striping (such as screen stripes), it may appear to flicker or display a moiré pattern.

Do not apply excessive pressure on the display screen surface, it may cause the appearance of a moiré or pooling pattern. If this occurs, use less pressure on the display screen when working with the pen.

When a still image is displayed for a long period of time, an after-image may remain for a short time. To prevent this, use a screen saver or other power management feature.

To extend the life of the pen display backlight, set your computer's power management to turn off the display when it is not in use for extended periods of time.



STEP 2: PEN TABLET INSTALLATION

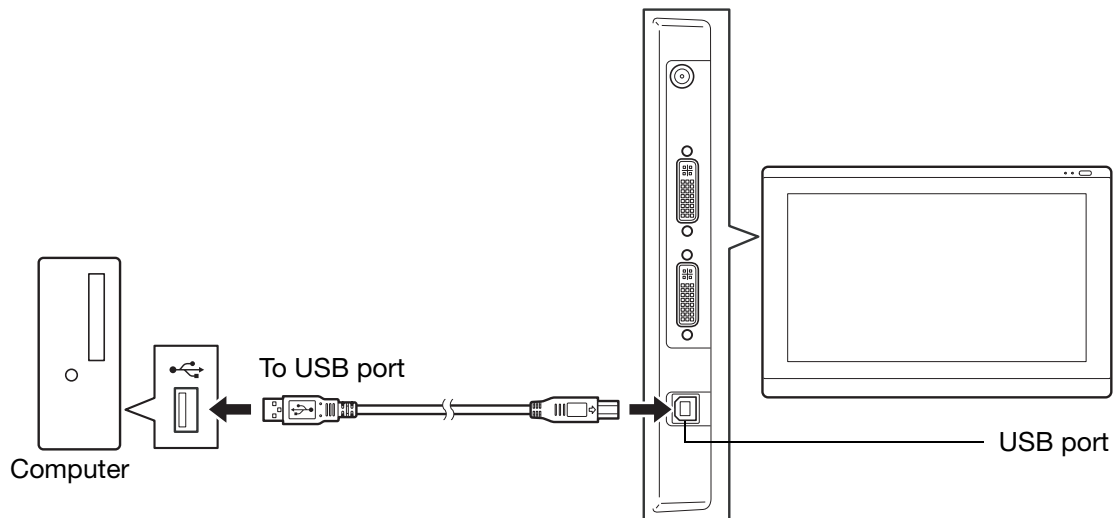
In this step, the interactive pen display is installed as a pen tablet.

[USB cable installation](#)

[Software installation](#)

USB CABLE INSTALLATION

Plug the square end of the USB cable into the USB port of the interactive pen display. Plug the other end into an available USB port on your computer or USB hub attached to your computer.



Next, move on to the [Software installation](#).



SOFTWARE INSTALLATION

Important: You **MUST** install the **Wacom driver software** for correct pen-on-screen functionality.

Save your work and close all open applications. Temporarily disable any virus protection programs.

1. Insert the Installation CD into your computer's CD-ROM drive. If the software installer menu does not automatically display, double-click on the INSTALL icon located on the CD. (You can also download and install the latest software driver, when available, from the Wacom website for your region.) Click the Notes link on the driver download page to view any additional information about the driver.
2. Click INSTALL TABLET and follow the prompts to install the driver software.
3. Reactivate your virus protection program.
4. After completing the software installation, make sure you can use your pen on the interactive pen display to move the screen cursor.
5. When you place the pen tip on the display screen, the screen cursor should immediately jump to a corresponding position approximately beneath the pen tip. Lift the pen tip and place it on the display screen surface in a different location. The screen cursor should again jump to the new position. This is known as absolute positioning, and enables you to position the screen cursor without having to drag your pen across the display screen surface.
6. If you have trouble installing the pen display, see [Troubleshooting](#).

Notes:

Driver installation automatically activates the new pen input functions available within Microsoft Windows 8, Windows 7, Vista, and XP(except for Windows Starter and Home Basic, and Windows Vista Home Basic). User-specific preferences are supported. After logging in, each user can customize their personal settings in the Wacom tablet control panel. Switching to another user will automatically load the settings for that user.

To uninstall the software driver, see [Uninstalling the interactive pen display](#).

If the pen display does not respond properly or you lose cursor control, the pen display preferences may be corrupted. You can delete the current preference settings and return the pen display to its factory default condition. See [Managing preferences](#).

Next, see [Calibrating the pen display](#) to precisely align the screen cursor to the pen tip.





WORKING WITH THE INTERACTIVE PEN DISPLAY

As you work with the pen display you can rest your hand lightly on the display screen, just as if it were a sheet of paper.

Because the pen display surface will be a little higher than your desk, consider adjusting the height of your desk or chair to assure comfortable use of the device.

[Ergonomics](#)

[Using the pen](#)

[Working with multiple monitors](#)

[Adjusting the display](#)

ERGONOMICS

To minimize fatigue, comfortably organize your work area. Position your pen display, the pen, and your keyboard for easy access without unnecessary reaching. The pen display and any other displays should be positioned so you can view them comfortably with a minimum of eyestrain.

- Take short breaks between tasks to stretch and relax your muscles.
- Use a gentle grip when working with the pen.
- Alternate tasks throughout the day.
- Maintain a good posture at all times. Minimize awkward postures and repetitive movements that cause discomfort.
- Change your position if you feel any discomfort due to your work position.

Note regarding RSI: Wacom makes no representation, promise or guarantee that Wacom products will cure or prevent, in whole or in part, mouse-induced repetitive stress symptoms, injuries or conditions. Individual results may vary. Always obtain competent medical advice to determine the most appropriate treatment for your specific situation.

Tips:

Be careful that you do not pull the cables out of their connections by accidentally moving the pen display too far from the computer.

The pen tether can be used to ensure your pen stays with your pen display. Simply loop one end of the tether through the tether hole located on the pen, and the other end of the tether through the tether connection point located on either side of the pen display.

The pen display can also be mounted to articulated arms or other third-party stands meeting the VESA specification for display stands. For details, see [Using an alternate mount or stand](#).



USING THE PEN

The pen is cordless, battery-free, and senses the amount of pressure you apply to the tip.

[Holding the pen](#)

[Positioning](#)

[Clicking](#)

[Dragging](#)

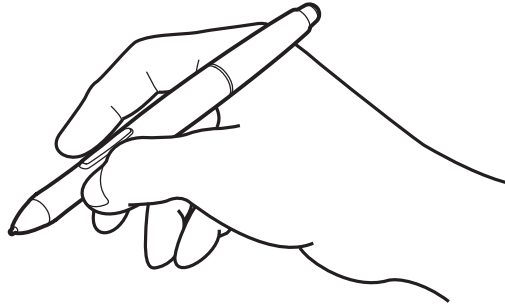
[Using the side switch](#)

[Working with pressure sensitivity](#)

[Working with multiple monitors](#)

HOLDING THE PEN

Hold the pen like you would a normal pen or pencil. As you work with the interactive pen display you can rest your hand lightly on the display screen. You can tilt the pen in any way that feels most comfortable.

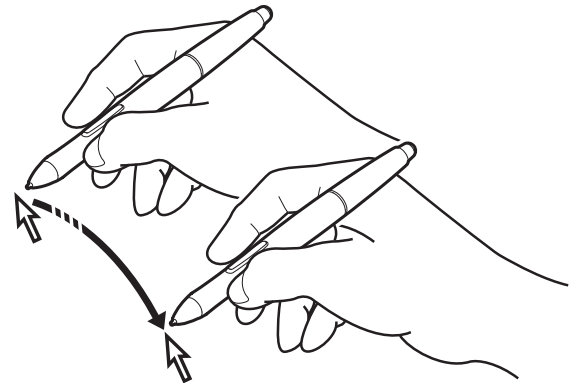


For information on changing the pen settings, see [Customizing the pen display](#).

POSITIONING

To position the screen cursor, move the pen slightly above the pen display screen without touching the screen surface. Press the pen tip on the display screen to make a selection.

Note: [Calibrating the pen display](#) ensures correct alignment of the screen cursor with the pen tip. If the screen cursor does not jump to a position near the pen tip when you place the pen on the display screen, then the pen display software driver may not be installed or is not loading. Install the driver software if necessary. Otherwise, see [Troubleshooting](#).





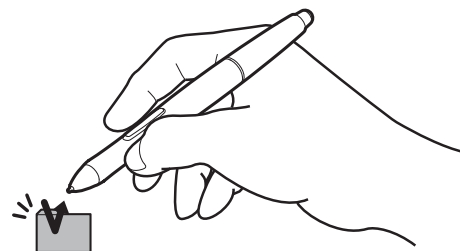
CLICKING

Tap the display screen once with the pen tip, or touch the pen to the display screen with enough pressure to register a click.

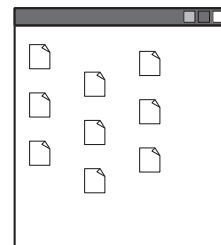
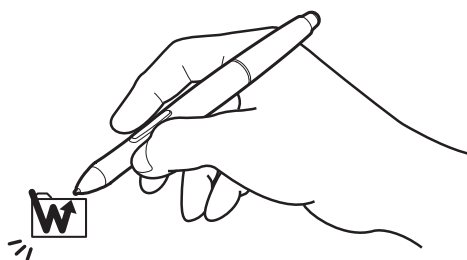
Windows tip: To make navigating with the pen easier, configure Windows to select when the pen is over an icon and to launch the icon with a single click. To turn on this feature, first open a folder.

For Windows 8, Windows 7 and Vista, from the ORGANIZE pull-down menu choose FOLDER AND SEARCH OPTIONS. From the GENERAL tab select SINGLE-CLICK TO OPEN AN ITEM (POINT TO SELECT).

For Windows XP, from the TOOLS pull-down menu choose FOLDER OPTIONS.... From the GENERAL tab select SINGLE-CLICK TO OPEN AN ITEM (POINT TO SELECT).

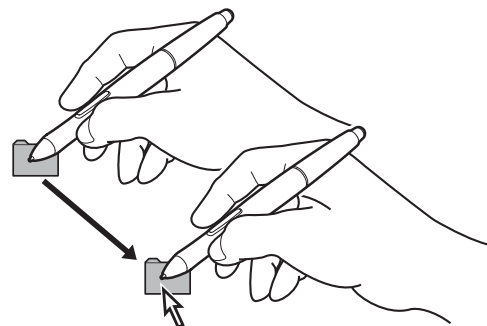


Press the upper side switch (when set to DOUBLE CLICK), or quickly tap the display screen twice in the same place with the pen tip. Double-clicking is easier when the pen is perpendicular to the pen display screen.



DRAGGING

Select an object, then slide the pen tip across the display screen to move the object.





USING THE SIDE SWITCH

The pen may be equipped with a DuoSwitch. This switch has two programmable functions that can be selected by rocking the switch in either direction. You can use the DuoSwitch whenever the pen tip is within proximity (5 mm (0.2 inch)) of the display screen surface; you do not need to touch the pen tip to the display surface in order to use the switch. By default, the upper switch is set to DOUBLE CLICK, and the lower switch is set to RIGHT CLICK. Switch functions can be modified or disabled using the Wacom tablet control panel. See [Customizing the pen display](#).

WORKING WITH PRESSURE SENSITIVITY

The pen responds to the nuance and inflection of your hand movements, enabling you to create natural-looking pen strokes within applications that support this feature. To annotate and write with pressure, select a pressure-sensitive tool from your application's tool palette. As you work on the screen surface, use various amounts of downward pressure on the tip of the pen.

WORKING WITH MULTIPLE MONITORS

When you are working with the pen display and additional monitors on the same system, the screen cursor movement on the standard monitors will depend on your system configuration.

If a second monitor is connected in mirror mode, both the pen display and the other monitor will show identical images and screen cursor movement.

If you are using the pen display with other monitors in extended monitor mode, you have several options for navigating on the other monitors:

- Set a pen side switch to the DISPLAY TOGGLE function. You can then press the button to toggle the screen cursor between the pen display and your other displays. For example, your product can be used as a pen display (the screen cursor is positioned at the pen tip location) or toggled for use as a standard Wacom tablet (the screen cursor can be moved across the entire desktop or additional displays). See [working with Display Toggle](#) for more information.
- Set one of the pen side switches to MODE TOGGLE. You can then quickly switch between pen mode for working on the pen display and mouse mode for working on the other monitors.





ADJUSTING THE DISPLAY

FACTORY PRESETS, AUTO-SYNC, AND USER SETTINGS

Factory presets: For optimal display quality, set your video card to the maximum (native) resolution that can be used with your pen display. See the [Product information](#) for details.

Auto-sync: The interactive pen display automatically synchronizes to the incoming signal. The auto-sync function sets the horizontal and vertical screen position, as well as pitch and phase. Auto-sync will function between the supported horizontal and vertical frequency ranges. See the [Product information](#) for details.

If the pen display does not automatically synchronize with the incoming signal, you can use the OSD AUTO ADJUST option to initiate display synchronization. Further screen display adjustments can be manually made using the On Screen Display (OSD) controls.

Color calibration: Changing the color, color temperature, contrast, brightness, or backlight from their default settings will invalidate the ICC color profile that was included on the Installation CD. (Some models may not include a color profile.)





USING THE EXPRESSKEYS

Press individual keys to perform frequently used functions or keystrokes. ExpressKeys can also be used to modify your pen, touch, or other input tool properties as you work. If your product supports [multi-touch](#), you can also use gestures to perform many of these functions.

Default settings are shown by ExpressKey numbers, which are numbered 1 through 5 from left to right and shown in “Front view” on page 8.

ExpressKey Number	DTK-2241	DTH-2242 (with touch)
1	Radial Menu	Touch on/off toggle
2	Precision Mode	Precision Mode
3	Display Toggle	On-screen keyboard
4	Back	Back
5	Forward	Forward

ExpressKeys can be operated in combination with one another. For example, customize one key for the CTRL function and another for ALT. When you press both keys at the same time a CTRL+ALT function is initiated.

ON SCREEN DISPLAY (OSD) SETTINGS

The OSD function enables you to optimize a variety of display settings. When in OSD mode, the OSD functions are set using ExpressKeys 1 through 4, which are numbered from left to right and shown in “Front view” on page 8. OSD functions are described below. and are the same for the DTK-2241 and DTH-2242.

To switch to OSD mode:

1. Press the right hardware control button (button 2) to open the OSD menu (see “Front view” on page 8).
2. Use ExpressKeys 1 through 4 to select and change the settings.
3. Press the hardware control button again to close the OSD menu and return to ExpressKeys mode.

ExpressKey Number	Description
1	Select
2	Move the cursor up
3	Move the cursor down
4	Move up one menu level

Note: Press ExpressKey 1 to close the OSD menu. All settings are automatically saved when the OSD menu closes and will be used the next time the unit receives a similar video signal. This is applicable to all display modes. If you make changes to the display appearance and cannot return to the original settings, use the RESET option to return the pen display to its original factory defaults.

Menu options for On Screen Display are:

LANGUAGE options allow you to choose the language in which to display the OSD menu.

OSD POSITION options include:

- VERTICAL. Adjusts the vertical position of the OSD menu window.
- HORIZONTAL. Adjusts the horizontal position of the OSD menu window.
- TRANSPARENCY. Changes the opaqueness of the OSD menu background.

DISPLAY options include:





- **CONTRAST.** Increases or decreases image contrast. Changes in contrast may affect color accuracy.
- **BRIGHTNESS.** Increases or decreases the image brightness.
- **BACKLIGHT.** Increases or decreases the backlight brightness level.

COLOR options include:

- **5000K, 6500K, 9300K.** Enables you to adjust the pen display color temperature, in degrees Kelvin.
- **DIRECT** displays the colors directly from the video card without any adjustment. When selected, contrast or brightness cannot be adjusted.
- **CUSTOM** enables you to independently adjust the RED, GREEN, and BLUE display colors.

Note: Any changes you manually make to the color settings will invalidate the color profile. (Some models may not include a color profile.)

SCALING options include:

- **FULL.** Resizes the image to fill the whole screen.
- **ASPECT.** Resizes the image to fill as much of the screen as possible while maintaining the correct aspect ratio.
- **1:1.** Displays the image at the actual resolution.

OTHER options include:

- **VERTICAL.** (VGA only) Changes the vertical position of the image. To automatically adjust, use the AUTO ADJUST option.
- **HORIZONTAL.** (VGA only) Changes the horizontal position of the image. To automatically adjust, use the AUTO ADJUST option.
- **AUTO ADJUST.** (VGA only) Choose this function to automatically optimize the display screen image.
- **RESET** returns the display parameters of the current mode to their factory default settings.
- **EXIT** dismisses the OSD without making changes.





THE MULTI-TOUCH EXPERIENCE: DTH-2242



The DTH-2242 pen display provides interactive multi-touch functions, which enable you to interact with a computer using only your fingertips on the pen display screen surface.

You can use touch on the DTH-2242 as you would on any other Mac or Windows device, such as phones, trackpads, and notebooks. First learn the basic actions to navigate and perform typical mouse operations. Then learn how to scroll, zoom, and rotate.

Touch is activated whenever it is enabled and you touch the display screen surface.

- When using touch, you can generally position your fingers as far apart as is comfortable. However, placing your fingers too closely together may be interpreted by the pen display as input from a single finger, or it may confuse which finger initiated or performed an action or gesture. Your fingers must remain within the active area of the screen surface.
- Experiment with touch to see what works best for you. Take care to prevent accidental touches on the display screen when making gestures. For example, if your small finger touches the display screen surface when zooming or scrolling, you may trigger an unanticipated right-click.

Note: For product models that support both pen and multi-touch, you can simultaneously work with the pen and touch in supporting applications. For example, you might use touch to turn a 3D object while using the pen to sculpt a surface texture. The pen has priority over touch whenever the pen tip is within proximity of the pen display screen. Lift the pen and your hand away from the display screen surface to enable touch.

[Navigating with multi-touch](#)

[Customizing multi-touch](#)

[Testing multi-touch](#)

NAVIGATING WITH MULTI-TOUCH



Touch options can be individually enabled or disabled within the Wacom tablet control panel. Touch is on when selected in the TOUCH OPTIONS, STANDARD GESTURES, or MY GESTURES tab.

- Use basic actions to navigate and perform typical mouse operations.
- Use gestures to scroll, zoom, rotate, and perform other functions.

You can [customize your touch experience](#) and also [customize the ExpressKeys](#) to perform some touch functions.





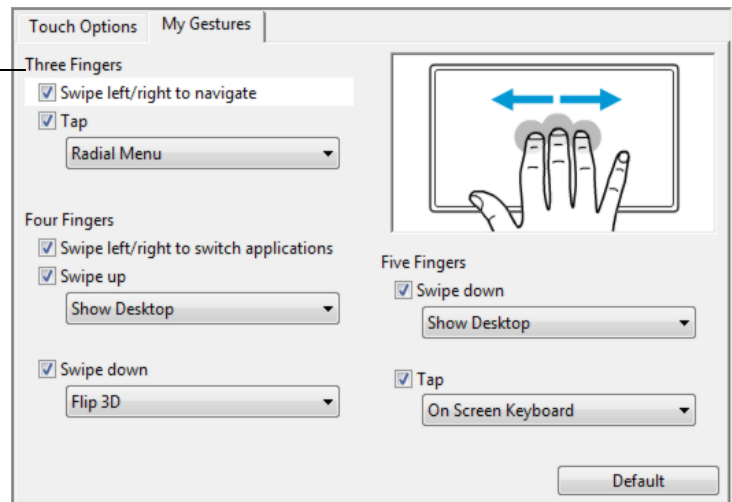
Uncheck to disable touch.

Touch can be completely disabled (and again enabled) from any of the touch function tabs in the Wacom tablet control panel. You can also assign an ExpressKey to toggle touch on and off.

MY GESTURES tab shown.

Windows screen capture shown. Available options may vary, depending on your operating system and version.

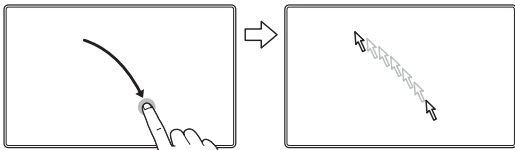
Windows: This tab is visible only after you select the USE WACOM GESTURES option in the TOUCH OPTIONS tab.



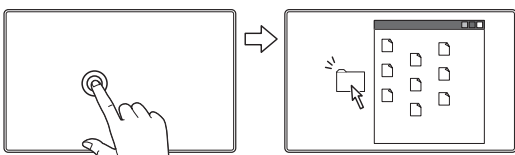
Note: In the following descriptions, two-finger actions and gestures apply primarily to the Mac.

Although some gestures may be similar, Windows systems use the Windows standard two-finger gestures by default. For a consistent experience across applications, select the USE WACOM gestures option in the Wacom tablet control panel TOUCH OPTIONS tab.

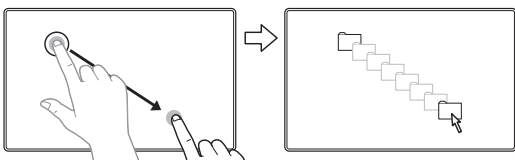
BASIC FUNCTIONS



Navigate. Use a single finger to position the screen cursor. The screen cursor jumps to the position where you touch the display screen surface.



Double-click. Using a single finger, tap twice on an item.



Drag. Using a single finger, select an item. Move your finger across the display screen surface to drag your selection. Lift your finger to release the item.

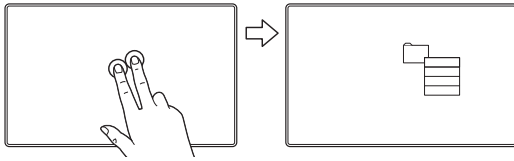
Tip:

You can select and drag multiple items on the system desktop:

Windows: Press the CTRL or SHIFT key as you tap to select multiple items.

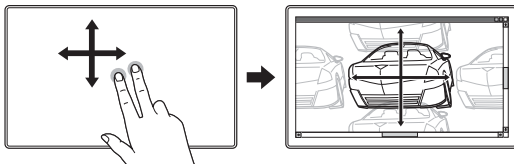
Mac: Press the SHIFT or COMMAND key as you tap to select multiple items.



**TAP TO RIGHT CLICK**

To right-click and bring up a context menu at the screen cursor position, tap the display screen surface with two fingers spaced slightly apart.

You can then select an option in the menu with the touch of a finger.

APPLICATION-SPECIFIC FUNCTIONS**SCROLL**

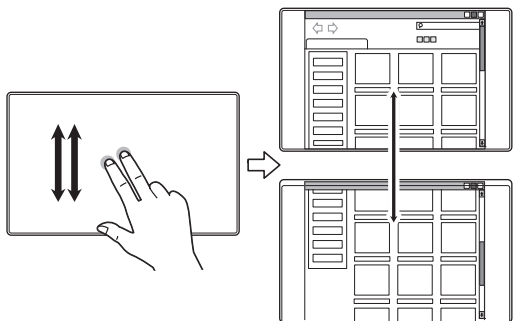
Place two fingers on the display screen surface. Using a smooth motion, move your fingers together in parallel.

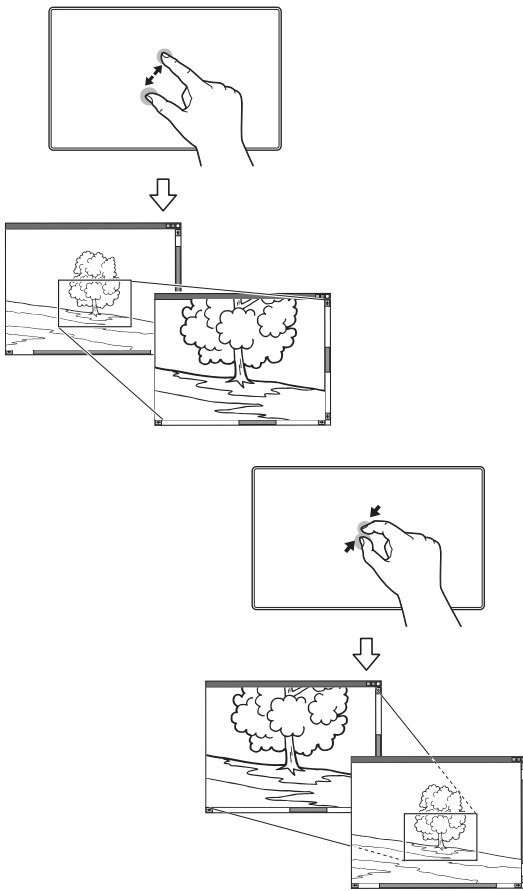
- Scroll up by moving your fingers in an upward motion.
- Scroll down by moving your fingers in a downward motion.
- Scroll left by moving your fingers in a leftward motion.
- Scroll right by moving your fingers in a rightward motion.

Fast scroll. Quickly move (or flick) two fingers together, lifting your fingers at the end of the motion.

- Fast scroll up by flicking your fingers in an upward motion.
- Fast scroll down by flicking your fingers in a downward motion.

Note: Fast scrolling works only for vertical scrolling.

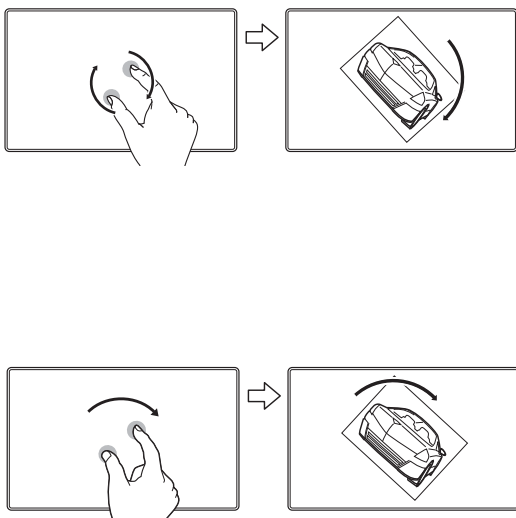




ZOOM

First place two fingers on the display screen surface.

- Zoom-in by moving (expanding) your fingers away from one another.
- Zoom-out by moving (pinching) your fingers toward one another.



ROTATE

Two finger rotate. Place two fingers diagonally on the display screen surface and then rotate them clockwise or counter-clockwise.

For best recognition of this gesture, start with your fingers positioned diagonally on the display screen and keep them at least 25 mm (1 inch) apart.

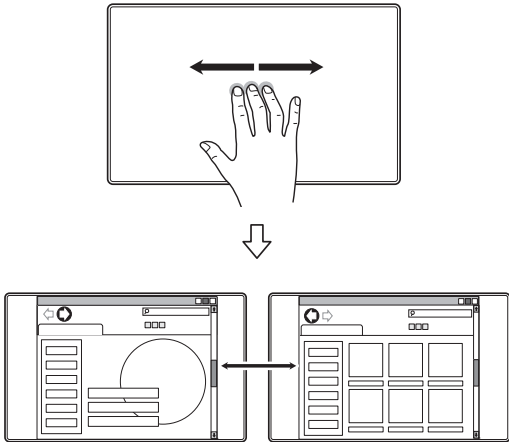
Note: The rotate gesture may work differently depending on the application you are working with. Rotation may work smoothly, in 90-degree increments, or not at all.

Rotate around finger. Place two fingers diagonally on the display screen surface. Keep one finger stationary and move the other finger around it.

For best recognition of this gesture, start with your fingers positioned diagonally on the display screen and keep them at least 25 mm (1 inch) apart.

Note: The rotate gesture may work differently depending on the application you are working with. Rotation may work smoothly, in 90-degree increments, or not at all.





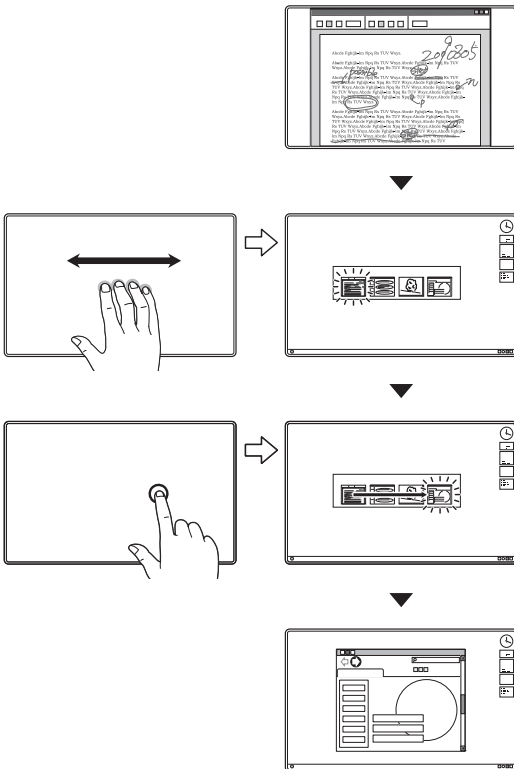
SWIPE LEFT/RIGHT TO NAVIGATE

Forward or Back (swipe right or left). Swipe using three fingers spaced slightly apart, lifting your fingers at the end of the motion.

- Send a 'Forward' command in most browsers and picture viewers by swiping to the right.
- Send a 'Back' command in most browsers and picture viewers by swiping to the left.

Tips:

- Swiping is similar to using the right and left arrow keys in document viewers.
- Use the swipe gestures to page forward or back in most web browsers.

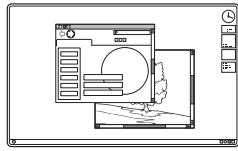


SWIPE LEFT/RIGHT TO SWITCH APPLICATIONS

Using four fingers spaced slightly apart, move your fingers left or right to open the application switcher. Then use a single finger to select an application.

Mac OS 10.7.x. Using four fingers, swipe them left or right to switch between full-screen apps.



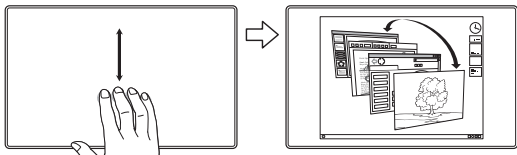
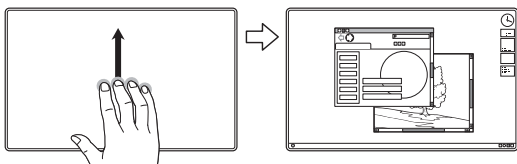
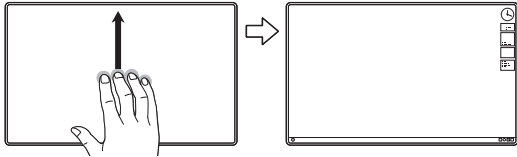


SWIPE UP to SHOW DESKTOP

Using four fingers spaced slightly apart, swipe up to show the desktop. Swipe up again to move your open windows back to the desktop.

Mac OS 10.7.x. Swipe up for Mission Control and view all of the open windows on your Mac. Swipe up again to exit Mission Control.

This gesture can be customized. See [Choosing custom multi-touch functions](#).

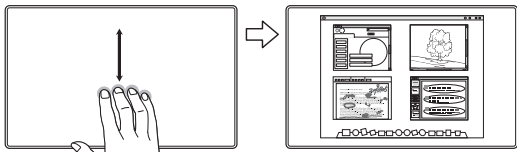


SWIPE DOWN for FLIP 3D/EXPOSÉ/APP EXPOSÉ

Using four fingers spaced slightly apart, swipe down.

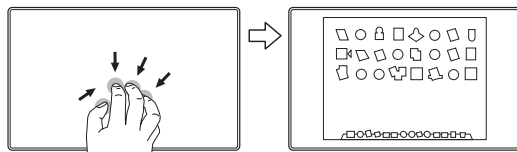
- Flip 3D (Windows): Your first swipe opens Flip 3D. Swipe down again to close Flip 3D. Swipe left or right to move through the open windows. Use a single finger tap to select.
- Exposé (Mac): Your first swipe opens Exposé. Swipe down again to close Exposé. Use a single finger tap to select.
- App Exposé (Mac OS 10.7.x): Swipe down to preview the open windows of the app you are working with. Swipe down again to exit App Exposé.

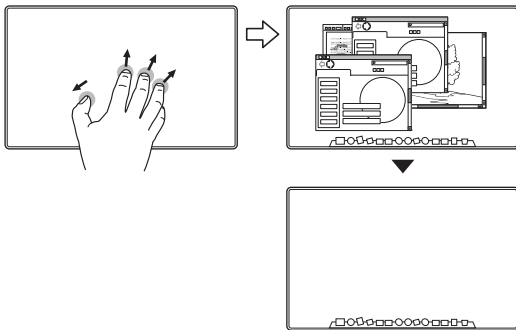
This gesture can be customized. See [Choosing custom multi-touch functions](#).



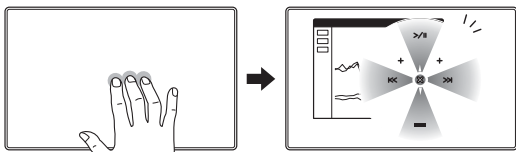
PINCH FOR LAUNCHPAD

Mac OS 10.7.x only. Place your thumb and three fingers on the display screen surface, then pinch them together to fade your open windows and display all of your apps.



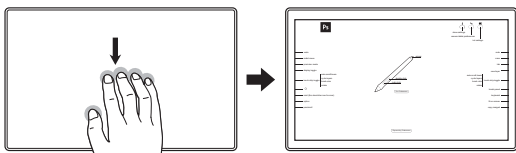
**SPREAD TO SHOW DESKTOP**

Mac OS 10.7.x only. Place your thumb and three fingers on the display screen surface, then spread them apart to show the desktop view.

WACOM-SPECIFIC FUNCTIONS**TAP to display RADIAL MENU**

Using three fingers spaced slightly apart, tap them on the display screen surface. This action will open the [Radial Menu](#).

This gesture can be customized. See [Choosing custom multi-touch functions](#).

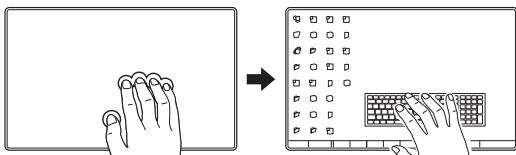
**SWIPE DOWN to show settings.**

Using five fingers spaced slightly apart, swipe down to activate (on your display screen) an interactive diagram of the current ExpressKey, Touch Ring, and pen settings.

Click on a section of the diagram to open the appropriate Wacom tablet control panel tab. You can then adjust settings as needed.

Swipe down again to dismiss the diagram, or click anywhere outside of the diagram.

This gesture can be customized. See [Choosing custom multi-touch functions](#).

**TAP to show ON-SCREEN KEYBOARD**

Using five fingers spaced slightly apart, tap them on the display screen surface. This action will launch the on-screen keyboard.

Close the keyboard by again tapping five fingers on the display screen surface.

This gesture can be customized. See [Choosing custom multi-touch functions](#).





CUSTOMIZING MULTI-TOUCH



Use the Wacom tablet control panel to customize your product for the way you like to interact with multi-touch on your pen display and computer. Select the TOUCH icon in the TOOL list. Then select an appropriate tab to customize, and change settings using the available options. See also [Navigating with multi-touch](#).

[Control panel overview](#)

[Setting multi-touch options](#)

[Choosing standard multi-touch functions](#)

[Choosing custom multi-touch functions](#)

[Application-specific settings](#)

[Disabling multi-touch](#)





SETTING MULTI-TOUCH OPTIONS



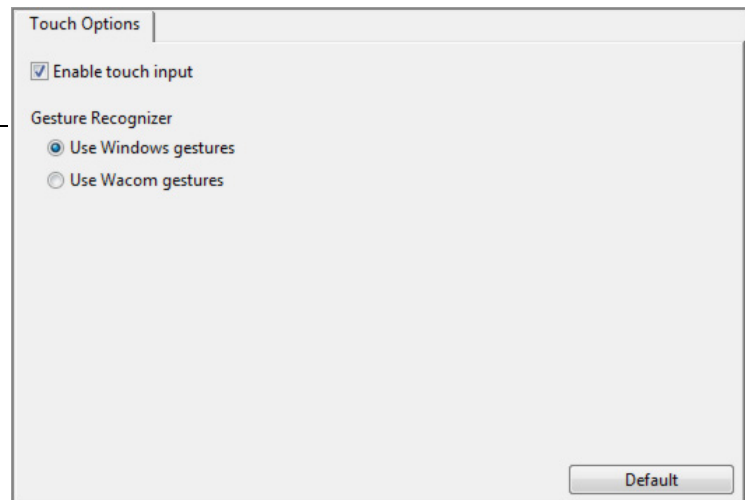
Select the TOUCH OPTIONS tab.

For Windows 8 or Windows 7 only.

Choose an option to use Windows standard gestures or Wacom gestures. The default is to use Windows gestures.

This is a global option and will apply to all of your applications.

Tip: Choose USE WACOM GESTURES for a consistent experience across applications. When selected, all Windows standard gestures are available, as well as the customizable gestures shown on the MY GESTURES tab of the Wacom tablet control panel.



CHOOSING STANDARD MULTI-TOUCH FUNCTIONS



To customize your pen display for your touch preferences on a Mac, select the STANDARD GESTURES tab.

Note: This tab is not available for Windows systems. The Windows standard two-finger actions and gestures are always available.

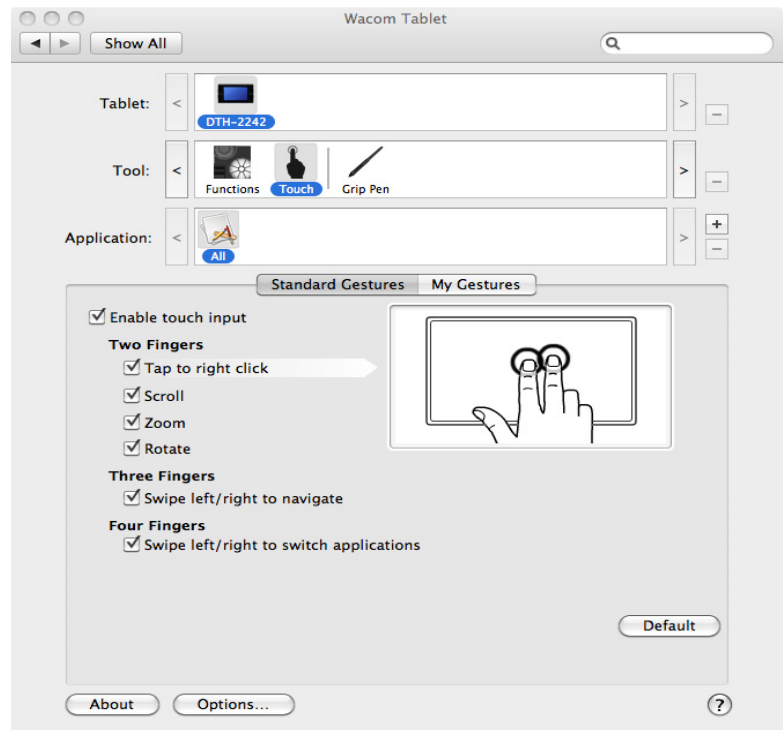
[Multi-touch](#) actions and gestures are available when selected.

So that you may work in different ways, some functions (such as a right-click) can be performed using different actions or gestures.

Position the screen cursor over a touch option to see a static image of that function.

If you do not choose a specific option to view, then the control panel will display each option sequentially, from top to bottom.

See also [Navigating with multi-touch](#) and [Choosing custom multi-touch functions](#).



Mac screen capture shown. Available options may vary, depending on your operating system and version.



CHOOSING CUSTOM MULTI-TOUCH FUNCTIONS



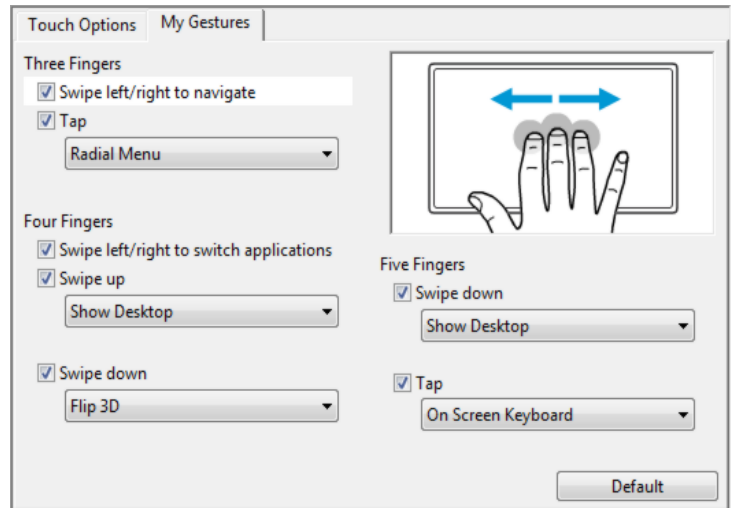
To create custom touch gestures, select the MY GESTURES tab.

[Multi-touch](#) gestures are modified based on your selection from the drop-down menus, and are available when selected.

Position the screen cursor over a touch option to see a static image of that function.

If you do not choose a specific option to view, then the control panel will display each option sequentially, from top to bottom.

See also [Navigating with multi-touch](#) and [Choosing standard multi-touch functions](#).



Windows screen capture shown. Available options may vary, depending on your operating system and version.

Windows: This tab is visible only after you select the USE WACOM GESTURES option in the TOUCH OPTIONS tab.

TESTING MULTI-TOUCH



If you encounter problems with multi-touch, it is a good idea to first check the assigned touch functions or reset them to their default conditions.

To further test touch:

1. Attempt to move the screen cursor by touching your finger in different places on the display screen surface. Touch to select an item. The status LED should brighten when you touch the display screen surface.
2. Open the Wacom tablet control panel and click on the ABOUT button. In the dialog box that appears, click DIAGNOSE.... The DIAGNOSTICS dialog box shows dynamic information about the pen display and tools, and appropriate information for touch-sensitive product models.
3. With the DIAGNOSTICS dialog box open, touch the display screen surface with first one, then with two fingers. Each time you touch the display screen surface, the tablet status LED should brighten and the TOUCH INFO state should change.

When you are done, click the CLOSE button to exit the dialog box.



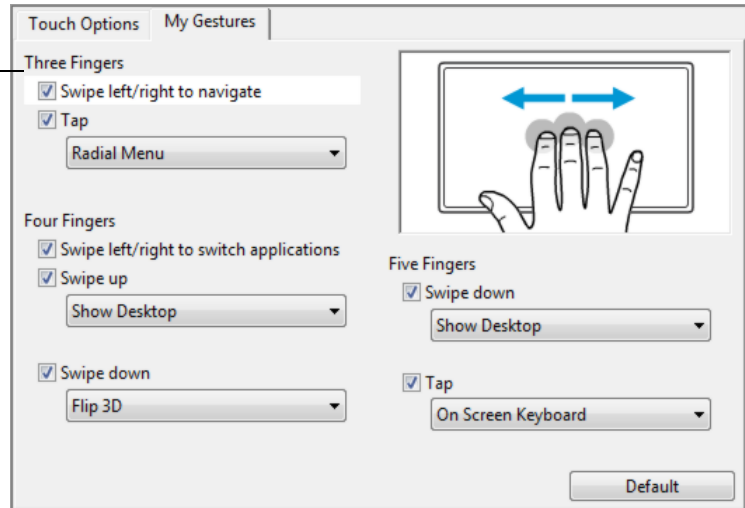


DISABLING MULTI-TOUCH



Choose the STANDARD GESTURES, MY GESTURES, or TOUCH OPTIONS tab to disable and enable touch.

- Deselect to disable multi-touch. You can still work with the ExpressKeys and pen.
- Select to ENABLE TOUCH.
- This option can also be changed by pressing an ExpressKey to which the TOUCH ON/OFF function has been assigned.



POWER SAVING

The interactive pen display conforms to VESA power-saving guidelines.

When used with a Display Power Management Signaling (DPMS) compliant computer or video card, the display will automatically comply with the below power-saving parameters.

When the power-saving function is in effect, the screen display is darker than usual.

The table below shows power consumption for both the DTK-2241 and the DTH-2242.

Computer mode	H-sync	V-sync	Video	Power consumption	Power lamp
Power ON	Yes	Yes	Active	45W or less	Blue
Power save mode	No	Yes	Blanked	1W or less	Orange*
OFF mode	No	No	Blanked	0.5W or less	OFF





CUSTOMIZING THE PEN DISPLAY

After mastering the basics of using your pen on the interactive pen display, you may want to customize the way your product works. This chapter describes how to use the Wacom tablet control panel to adjust your pen display and pen settings.

Advanced users can learn how to further optimize the pen display by creating [Application-specific settings](#).

[Opening the control panel](#)

[Control panel overview](#)

[Calibrating the pen display](#)

[Customizing the pen](#)

[Customizing the ExpressKeys](#)

[Working with Display Toggle](#)

[Application-specific settings](#)

OPENING THE CONTROL PANEL

To open the Wacom tablet control panel, use the pen on the pen display:

Windows 8: From the Windows 8 Start screen, click the WACOM TABLET PROPERTIES tile. If you are using the Windows 8 Classic Desktop, press the Windows key on your keyboard, or select the Windows icon in the Charms bar, to access the Start screen.n.

Windows 7: Click on the Windows START button and choose ALL PROGRAMS. Then select WACOM TABLET and choose the WACOM TABLET PROPERTIES option.

Macintosh. Open SYSTEM PREFERENCES from either the Dock, the Apple menu, or from the APPLICATIONS folder. Then click on the WACOM TABLET icon.

You can begin customizing the pen display after opening the control panel. See [Control panel overview](#).

Note: User-specific preferences are supported. After logging in, each user can customize their personal settings in the Wacom tablet control panel. Switching to another user will automatically load the settings for that user.



CONTROL PANEL OVERVIEW

Use the Wacom tablet control panel to customize the pen display. When you open the control panel, an icon for the pen is displayed in the TOOL list and the appropriate tabs are displayed. Your current selections are highlighted.

To customize the pen and pen display, make your changes to the tab controls. Experiment with different settings to find what works best for you. Any changes you make will take effect immediately. You can always click DEFAULT to return to the factory settings.

Note: [Application-specific settings](#) are for advanced users.

The upper portion of the control panel displays icons representing your pen display (TABLET), TOOL, and APPLICATION settings.

Closes the control panel.

The screenshot shows the 'Wacom Tablet Properties' window. At the top, there are three sections: 'Tablet' (DTH-2242), 'Tool' (Functions, Touch, Pen), and 'Application' (All). Below these are tabs for 'Pen' and 'Calibrate'. The 'Pen' tab is active, showing settings for 'Tip Feel' (Soft to Firm), 'Current Pressure' (Click to Full), and 'Tip Double Click Distance' (Off to Large). A central image of a pen shows 'Click', 'Double Click', and 'Right Click' settings. At the bottom, there are 'About', 'Options...', and 'Default' buttons, along with a help icon.

Annotations and their descriptions:

- Choose FUNCTIONS to customize the ExpressKey and Radial Menu settings. Display Toggle options are also available on multiple monitor systems. Choose PEN and TOUCH to customize those settings.** (Points to the 'Functions', 'Touch', and 'Pen' tool icons)
- Displays advanced options.** (Points to the 'Options...' button)
- Displays an information dialog, and an option to access the DIAGNOSTICS dialog.** (Points to the 'About' button)
- Resets the selected tab to its default settings.** (Points to the 'Default' button)
- Displays this manual.** (Points to the help icon)
- Displays customizable settings for the selected TOOL.** (Points to the 'Pen' tab)

Tool Tips are available for most control panel items. Simply position the screen cursor over an item and let it rest there; in a few moments the Tool Tip will pop up.

Additionally, your keyboard tab and arrow keys can be used to navigate the control panel.



Control panel lists and tabs: The control panel TABLET, TOOL, and APPLICATION lists allow you to select the pen display or tablet, tool, function, or application for which you want to change settings.

The TABLET list displays an icon for any supported pen display or tablet that has been installed on your system and is currently connected. All settings shown below this list apply to the selected pen display or tablet.

- The control panel will not launch unless a supported pen display or tablet is connected to the computer.
- Settings can only be viewed or changed for an attached pen display or tablet.
- A pen display or tablet cannot be deleted from the control panel list unless it is attached to the computer.

See also [Installing multiple tablets](#).

The TOOL list displays an icon for the tablet FUNCTIONS and for the PEN and TOUCH functions.

Note: When the pen is first used on the tablet it is automatically added to the TOOL list, and functions with the default settings. See [Customizing the pen](#) for more information.

The APPLICATION list lets you define TOOL settings that only apply to a specific application. See [Application-specific settings](#).

Note: The APPLICATION list is for advanced users; it is not necessary to select or add applications to customize your pen.





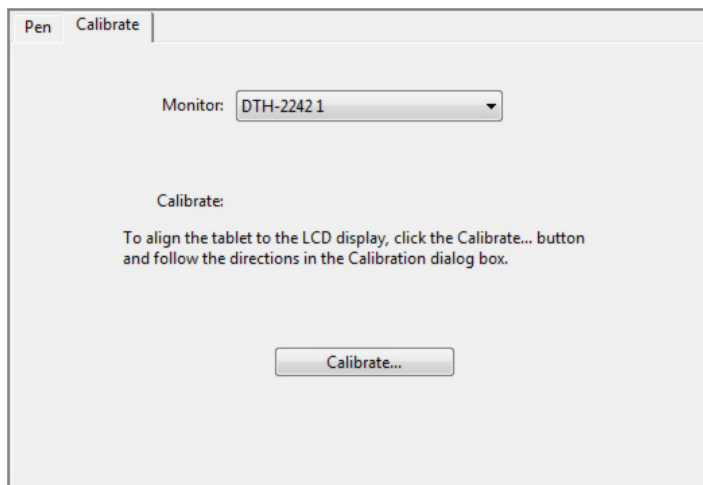
CALIBRATING THE PEN DISPLAY

You must calibrate the pen display to align the screen cursor with the position of the pen on the display screen. This is required to compensate for viewing angle, and to adjust for parallax caused by the display screen cover glass. Set the pen display in its working position, then follow the below procedure.

1. Open the Wacom tablet control panel.
If more than one pen display is installed on your system, select the unit you are working with from the TABLET list.
2. Select PEN from the TOOL list.
Then select the CALIBRATE tab.
3. If you are working with multiple monitors, select the MONITOR corresponding to the pen display. (Only monitors that are set to one of the resolutions supported by the unit will appear in the list.)
4. Click CALIBRATE... to activate the calibration screen.
5. Hold the pen and position yourself as you normally do when working with the pen display. Use the pen tip to click on the center of the crosshairs in the upper-left corner.
6. Then click on the center of the crosshairs that are displayed in the lower-right corner.
7. Test the alignment by positioning the pen at a few different points on the display. Click OK to accept the calibration. Click TRY AGAIN to recalibrate.

Note: Read the directions in the calibration screen for detailed instructions and additional options. The calibration setting applies to all applications.

Tip: To see the screen cursor slightly offset from the actual position of the pen tip, calibrate by clicking on a spot showing that offset from the crosshairs. For example, to have the screen cursor appear 2.5 mm (1/10th of an inch) above and to the left of the pen tip, calibrate by clicking on a spot 2.5 mm (1/10th of an inch) below and to the right of the crosshairs.



Crosshairs



Click on each target as it appears. Press ESC or wait a few seconds to cancel.



CUSTOMIZING THE PEN

Customizing your pen is easy. First open the Wacom tablet control panel using the pen. The pen will be selected in the TOOL list and the appropriate tabs will be displayed. Select a tab and choose from the available options.

[Adjusting tip feel and double-click](#)

[Advanced tip pressure settings](#)

[Customizing pen buttons](#)

[Application-specific settings](#)

ADJUSTING TIP FEEL AND DOUBLE-CLICK

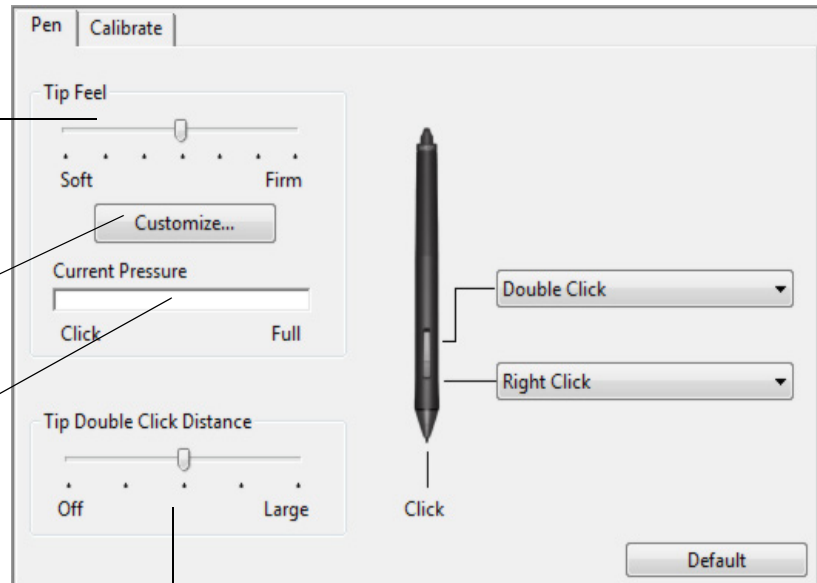
To adjust the tip sensitivity of your pen, select the PEN tab.

Customizes the amount of pressure needed to click or draw.

To create broad brush strokes or to click with a light touch, use a SOFT tip setting. For maximum control while sketching thin lines, use a FIRM tip setting.

Displays the tip [FEEL DETAILS](#) dialog box where you can further customize the tip sensitivity.

With your screen cursor positioned over an empty area of the control panel, press down on the pen display screen with your pen tip to test the current tip feel setting. Use the CURRENT PRESSURE bar to determine how hard you must press on the pen to reach maximum pressure.



Adjusts the size of the double-click area. A larger setting makes double-clicking easier.

Drag the slider to OFF if you do not want [double-click assist](#).

Tips:

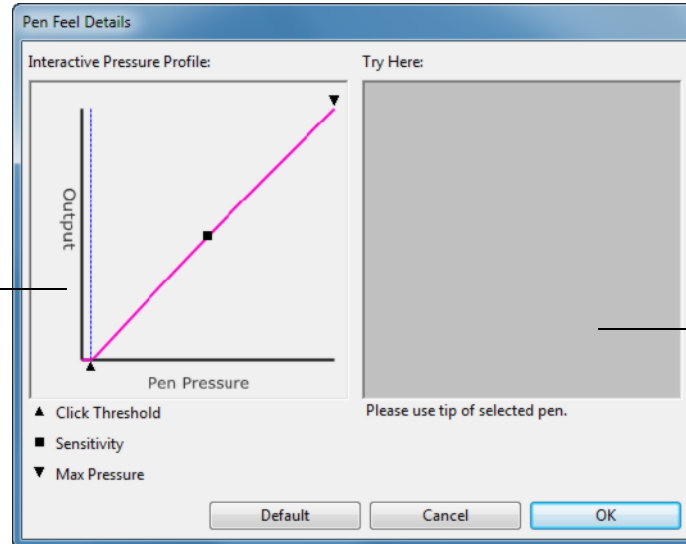
- Use a soft TIP FEEL for a wider range of pressure values with most pressure-sensitive applications.
- In some applications a soft pressure setting can make the pen overreact – any small press on the pen is magnified on the screen. If you experience this, try a firmer TIP FEEL setting.
- To make double-clicking easier, expand the tap area that accepts a double-click (the double-click distance).
- A large double-click distance may cause a delay at the beginning of brush strokes in some graphics applications. If you notice such effects, try setting a smaller double-click distance and using the side switch to double-click.



ADVANCED TIP PRESSURE SETTINGS

To further customize tip pressure settings, select the PEN and click on the DETAILS... button. The options within the FEEL DETAILS dialog box enable you to change the tip pressure sensitivity and click threshold settings independently. (In the PEN tab, these settings are adjusted simultaneously with the TIP FEEL slider.)

The PROFILE graphically displays the selected pressure SENSITIVITY curve and CLICK THRESHOLD settings. A curve that increases quickly makes the pen feel more sensitive.



Using your pen tip, make several strokes inside the box to test the results of your changes.

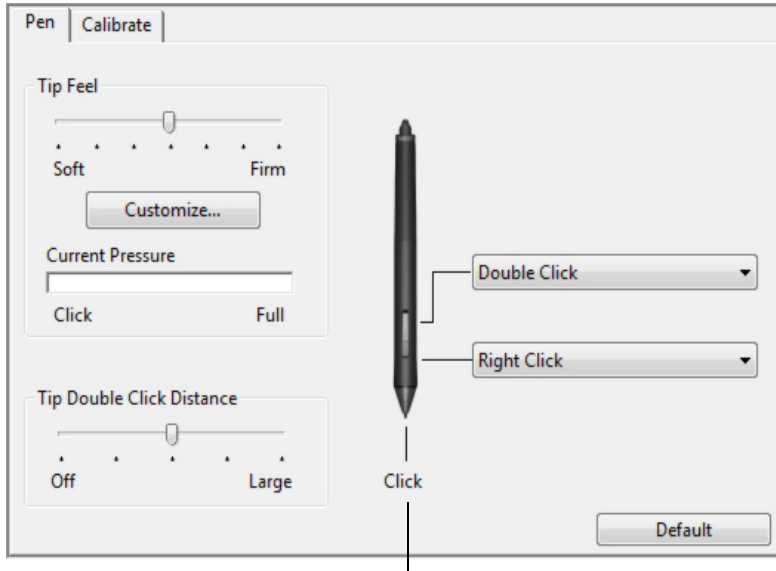




CUSTOMIZING PEN BUTTONS

Select the PEN tab to change the functions assigned to the side switches and tip of your pen.

Note: Some product configurations may include a pen without side switches.



Double-click here to change the function assigned to the pen tip. The tip must be set to CLICK in order to draw in most graphics applications.

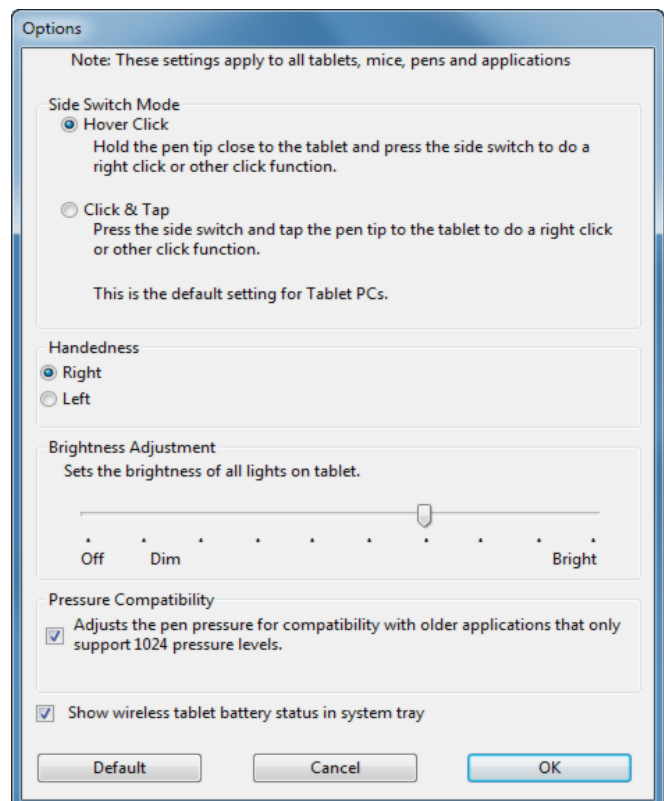
When you bring the pen tip within 5 mm (0.20 inch) of the pen display screen surface without touching the screen and press the upper or lower side switch, the selected function occurs.

Tip: To make double-clicking easier, set the side switch to double-click automatically by selecting DOUBLE CLICK.

You can change the SIDE SWITCH MODE to fit the way you like the pen to work when using click functions.

To access the SIDE SWITCH MODE settings, click on the OPTIONS... button at the bottom of the control panel. In the OPTIONS dialog box:

- Select HOVER CLICK to perform click functions without touching the pen tip to the pen display screen surface.
- Select CLICK & TAP and press the side switch while touching the pen tip to the pen display screen surface in order to perform a click function. CLICK & TAP enables the precise placement of your click functions, and is the default setting for Tablet PCs.
- Choose Right or Left for right-handed or left-handed orientation.
- Use the Brightness Adjustment slider to set your preferred brightness for the screen.





CUSTOMIZING THE EXPRESSKEYS

To customize the ExpressKeys, select the EXPRESSKEYS tab. Each key can be customized to perform a modifier, keystroke, or other function.

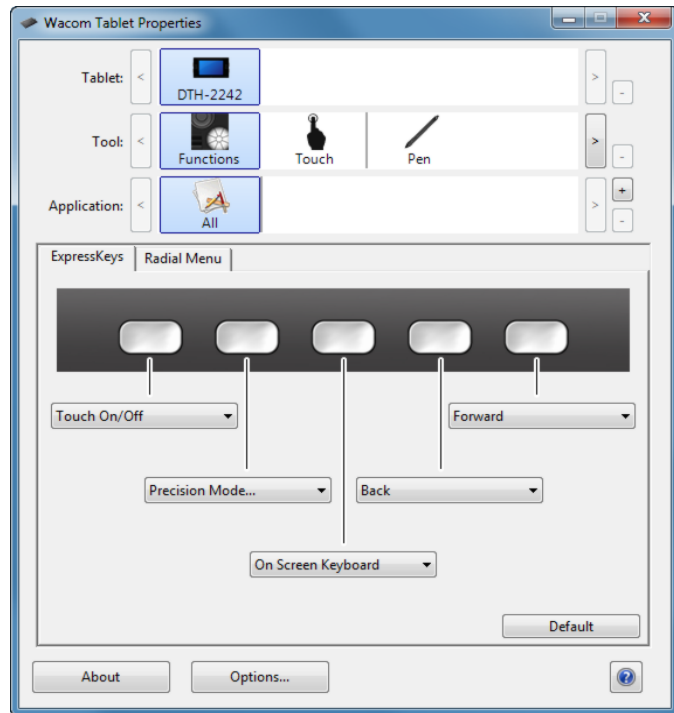
Note: The defaults shown are for the DTU-2242.

Use the dropdown menus to select [functions](#) to perform when the ExpressKeys are pressed.

ExpressKey functions can be defined for use with [specific applications](#).

See [using the ExpressKeys](#) for more information.

Important: Some applications can override and control the ExpressKey functions.





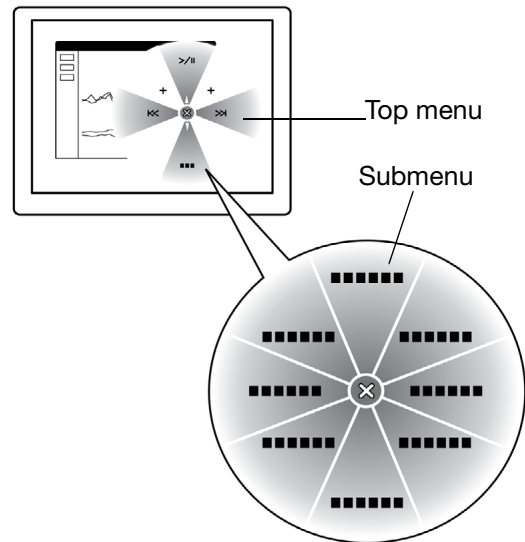
USING AND CUSTOMIZING THE RADIAL MENU

To display the Radial Menu, set a tool button or ExpressKey to the RADIAL MENU function. Whenever you press that button, the Radial Menu is displayed at the screen cursor position.

- The hierarchical Radial Menu appears in circular format. Each level of the menu consists of eight control slices which may contain various features and options to choose from.

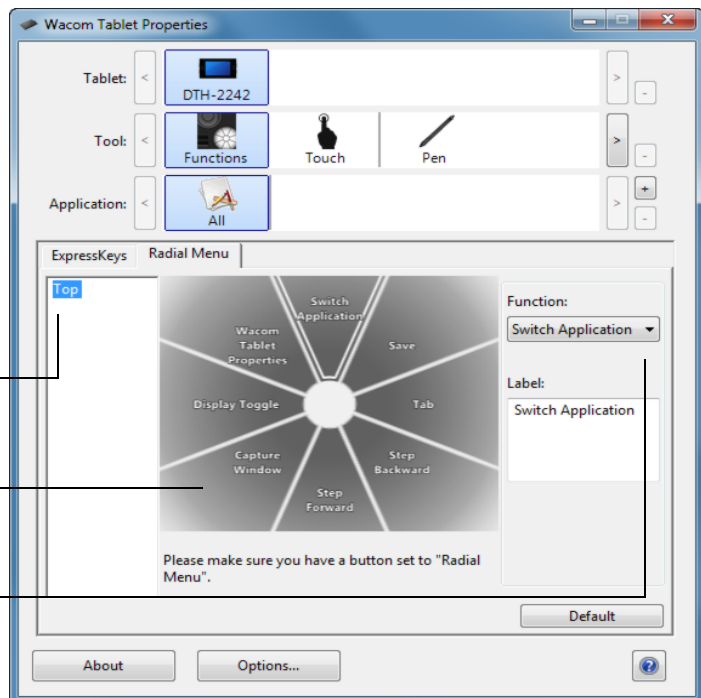
Select an available option by clicking on it within the Radial Menu. Some selections may display a submenu for additional options. Note: The menu closes after you make a selection.

- To close the Radial Menu without making a selection, click on the 'X' located at the center of the menu or on a control slice that has no function assigned to it. You can also again press the button used to display the menu.
- To make a selection without closing the Radial Menu, hold down the button that opens the Radial Menu.



Use the RADIAL MENU tab to customize the available functions on the Radial Menu.

- Select a control slice.
- Assign a control FUNCTION to the slice.
- Select a menu or submenu to customize. _____
- Select a control slice for which to customize settings. _____
- Choose the function(s) to perform. _____



BUTTON FUNCTIONS

The following options are available for pen, ExpressKey or Radial Menu settings. Not all options are available for all controls or pen display models.

FUNCTION NAME	DESCRIPTION
---------------	-------------

CLICKS

- **CLICK** Simulates a primary mouse button click. Be sure at least one button performs this function so you can always navigate and click.
- **RIGHT CLICK** Simulates a right mouse button click, which displays a context menu.
- **MIDDLE CLICK** Simulates a middle mouse button click.
- **DOUBLE CLICK** Simulates a double-click. For easier double-clicking, use this function instead of tapping twice with the pen tip.
- **CLICK LOCK** Simulates holding down the primary mouse button. Press the pen button once to initiate click lock. Press the button again to release click lock. Click lock is useful for dragging objects or selecting blocks of text.
- **4TH CLICK** Simulates a 4th mouse button click.
- **5TH CLICK** Simulates a 5th mouse button click.

KEYSTROKE...

Enables you to simulate keystrokes. Select this option to display the DEFINE KEYSTROKE dialog box.

Enter a keystroke or keystroke combination in the KEYS entry box.

Keystroke combinations can include letters, numbers, function keys (such as F3) and modifier keys (such as SHIFT, ALT, or CTRL for Windows, or SHIFT, OPTION, COMMAND, and CONTROL for Macintosh). You can also select special keystrokes or keystroke combinations from the ADD SPECIAL drop-down menu.

After defining a keystroke or keystroke sequence, click OK.

Important: Because the ENTER (Windows) and RETURN (Macintosh) keys can be selected as a defined keystroke, they cannot be used to select OK. You must use your pen to click on the OK button.

If prompted, enter a name for the keystroke definition. The name will be displayed with the respective control or in the Radial Menu, as applicable.

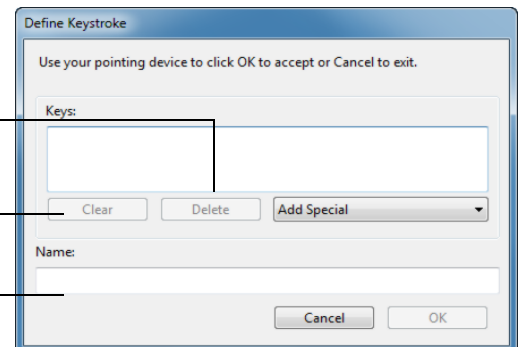
You can create different keystroke functions for different applications.

See [Application-specific settings](#).

Deletes only the last entry in the keystroke entry box.

Clears the keystroke entry box.

Allows you to enter a name for the defined keystroke.



To learn which keystroke shortcuts are supported by a particular application, see the documentation that came with the application.



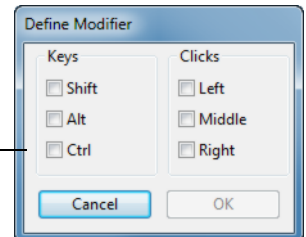
FUNCTION NAME

DESCRIPTION

MODIFIER...

Enables you to simulate modifier key(s) (such as SHIFT, ALT, or CTRL for Windows, or SHIFT, OPTION, COMMAND, and CONTROL for Macintosh) or mouse clicks. Many applications use modifier keys to constrain the size or placement of objects.

Choose one or more modifier key options. Select the appropriate CLICKS box if you want a left, middle, or right mouse click to occur when you press the pen button.



RADIAL MENU

Displays a [Radial Menu](#) on your screen. Each level of the hierarchical menu consists of eight menu slices which may contain various features and options to choose from.

BACK

Simulates the BACK command in browser applications.

FORWARD

Simulates the FORWARD command in browser applications.

PAN/SCROLL...

Enables you to position a document or image in any direction within the active pane by pressing a pen button set for PAN/SCROLL and then dragging with the pen tip across the pen display screen active area.

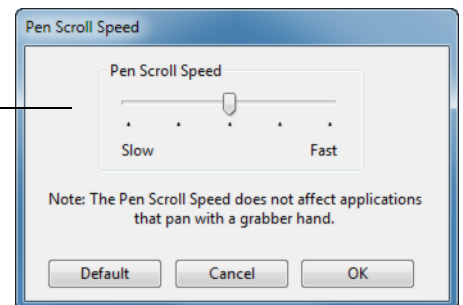
When you select PAN/SCROLL, the PEN SCROLL SPEED dialog box prompts you to set a scrolling speed for use in applications that do not support grabber hand (pixel-level) panning within a document or image.

A slower setting reduces the scroll rate and is useful for close-up and detail work where you need precise control of the image.

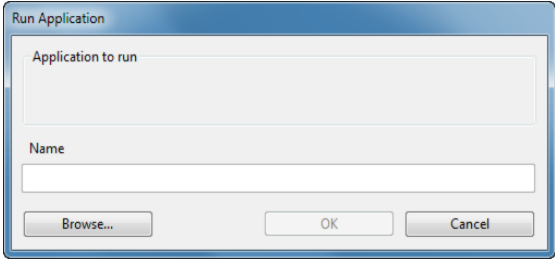
As you move the pen tip, the document or image is repositioned to follow the direction of pen movement on the pen display screen surface.

Release the button or lift the pen tip from the display screen surface when you are done.

In some application windows the document will precisely follow the screen cursor as you move the pen tip, while in others it will simply move in the same general direction as the screen cursor.





FUNCTION NAME	DESCRIPTION
SHOW DESKTOP	Minimizes all open windows to display a clean desktop.
SWITCH APPLICATION	Brings up the application switching dialog with focus on the next open application. On Windows 8, Windows 7 or Vista systems running Aero, Flip 3D will be activated with focus on the next open applications.
OPEN/RUN...	<p>Opens a dialog box where you can select a specific application, file, or script to launch.</p> <p>Click BROWSE... to locate an application, file, or script to launch. The selection you make appears in the APPLICATION TO RUN box. Click OK to accept the selection.</p>  <p>The dialog box will close and the OPEN/RUN... option you have selected will be assigned as your pen button option. Simply press the pen button to launch the assigned option.</p> <p>If your selection is for the Radial Menu, it will be displayed in the Radial Menu.</p>
INK TOGGLE	(Macintosh.) Toggles the “ink in any application” function of Ink on and off. Ink automatically recognizes and converts your handwriting into text and inserts it into a document. Handwriting recognition must be turned on for this function to work. See your Macintosh help for information on working with Ink.
EXPOSÉ	(Macintosh.) Tiles all open windows. To access this option, first choose KEYSTROKE... and then click on the ADD SPECIAL menu within the dialog box.
PRESSURE HOLD	Locks the pressure at the current pressure level until the button is released. For example, you can paint with pressure sensitivity until you reach the brush size that you like. You can then press the button and continue painting with the same size brush until the button is released.
PRECISION MODE	Changes the mapping around the current pen tip position such that you must move the pen twice as far for the screen cursor to cover the same distance on the display screen. To activate, press and hold a pen button to which the function has been assigned. Releasing the button returns to normal mapping.
DISPLAY TOGGLE	When your pen is in mouse mode, screen cursor movement is adjusted to act as if acceleration were off and speed set to slow.
	For multiple monitor systems. Enables you to toggle the screen cursor between the pen display and your other displays. When selected, your product can be used either as a pen display (the screen cursor is positioned at the pen tip location) or as a standard Wacom tablet (the screen cursor can be moved across the entire desktop or additional displays). See working with Display Toggle .





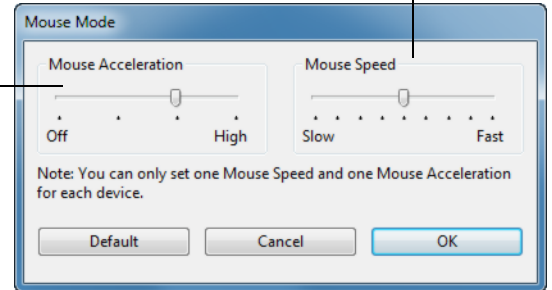
FUNCTION NAME	DESCRIPTION
---------------	-------------

MODE TOGGLE...

Toggles between [pen mode](#) and [mouse mode](#). When first setting a pen button to MODE TOGGLE..., the MOUSE MODE dialog box is displayed where you can adjust the mouse acceleration and speed.

Sets the screen cursor tracking speed when in mouse mode.

Sets the screen cursor acceleration when in mouse mode.



Mouse mode settings can be accessed from a number of different locations within the control panel. However, for each pen and application that you are customizing, only one MOUSE ACCELERATION and SPEED setting can be made.

The mouse mode acceleration and speed settings are independent of system settings. Changes you make to these settings in the Wacom tablet control panel do not affect similar system settings. However, changes made to similar system settings may affect your pen display settings.

TABLET PC

- TABLET PC INPUT PANEL
- JOURNAL
- TABLET PC DEFINED

(Tablet PCs and Windows systems that support the Tablet PC Input Panel.) Opens the Tablet PC input panel when you press a pen button set to this function.

(Windows 8, Windows 7 and Vista, and Tablet PC systems that include Microsoft Journal.) Opens Microsoft Journal.

(Tablet PCs and Windows systems that support the Tablet PC Input Panel.) Sets the button function according to settings found in the:

- Windows 8, Windows 7 and Vista TABLET PC SETTINGS and PEN AND INPUT DEVICES control panels.
- Windows XP Tablet Edition TABLET AND PEN SETTINGS control panel.

DISABLED

Disables the button function.

APPLICATION DEFINED

Reports only the button number to the application. This is for applications, such as CAD programs, that have built-in tablet support.

DEFAULT

Returns a button to its default setting.

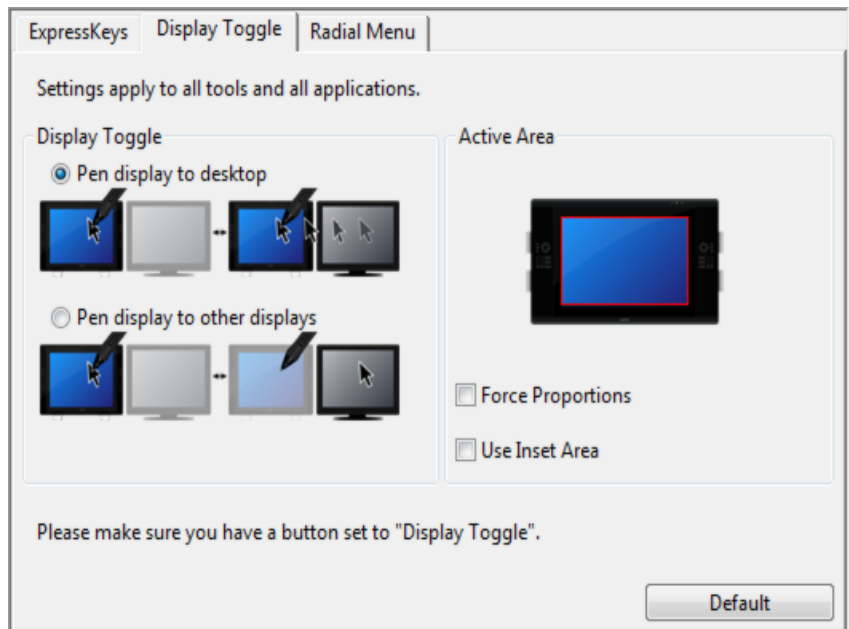


WORKING WITH DISPLAY TOGGLE

DISPLAY TOGGLE is available only on multiple monitor systems. The feature allows you to use your pen on the interactive pen display to navigate the screen cursor to any display on your system. After setting a pen side switch to the DISPLAY TOGGLE function, you can then press that button to toggle the screen cursor between the pen display and your other displays. For example, your product can be used as a pen display where the screen cursor is positioned at the pen tip location, or toggled for use as a standard Wacom tablet where the screen cursor can be moved across the entire desktop or additional displays.

When you open the Wacom tablet control panel and the pen display is the selected tablet, the DISPLAY TOGGLE tab will be available if the system has two or more displays. The DISPLAY TOGGLE tab enables you to define how the mapping will be applied to each toggled display.

- When PEN DISPLAY TO DESKTOP is selected and you press a pen button that has been assigned the DISPLAY TOGGLE function, the screen cursor will toggle from your pen display to the entire system desktop. Pressing the button a second time returns the screen cursor to the pen display.
- When PEN DISPLAY TO OTHER DISPLAYS is selected and you press the pen button, the screen cursor is toggled from your pen display to another active pen display or monitor. If additional displays are attached to the system, the screen cursor will toggle to each display in turn until it returns to the pen display from where the initial toggle began.



Important: If you are using application-specific settings with DISPLAY TOGGLE, make sure each customized application in the APPLICATION list (including ALL OTHER) has a pen button that is assigned to DISPLAY TOGGLE.

ACTIVE AREA options enable you to determine the size of the area where the pen is functional on the pen display. When you make a selection, the red indicator updates to illustrate your choice.

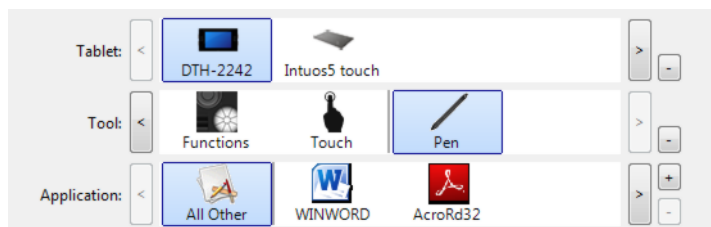
- FORCE PROPORTIONS adjusts the size of the tablet's active area to maintain correct vertical and horizontal proportions between the pen display and the entire desktop or newly mapped-to display. Depending on your settings, some portions of the tablet active area may no longer be usable when this option is selected.
- When deselected, the correct scale or proportions are not maintained – for example, sketching a circle on the pen display may create an ellipse on a mapped-to display screen.
- USE INSET AREA limits the tablet's active area to a sizing of 6 x 8 inches. If FORCE PROPORTIONS is also selected, this sizing may be less. When deselected, as much as possible of the entire tablet active area will be used for tablet-to-display mapping.



APPLICATION-SPECIFIC SETTINGS

You can customize your pen for use with a particular application. For example, you may prefer a firm pen tip pressure setting in one application and a soft pressure setting in another. The APPLICATION list enables you to add an individual application to the list and then customize your settings for that application.

- When no application-specific settings have been created and the pen is selected from the TOOL list, the APPLICATION list displays the ALL icon containing tool settings that apply to all of your applications if no application-specific settings have been added. The ALL icon is displayed and the PEN will have the same settings in all applications.
- When application-specific settings are added to the APPLICATION list, the ALL icon changes to ALL OTHER, and an application icon is displayed for the newly added application(s).



In the above example, application-specific settings have been added for the PEN. If you select the ALL OTHER icon and make changes to the tab settings, your changes will apply to the PEN in all applications except those which you have added to the APPLICATION list. If you select an application icon and make changes to the tab settings, your changes will apply to the PEN only while you are using that application.

When you create application-specific settings, you are creating a separate group of settings for the pen and selected application. See the following sections for additional details:

[Creating an application-specific setting](#)

[Changing application-specific settings](#)

[Removing application-specific settings](#)





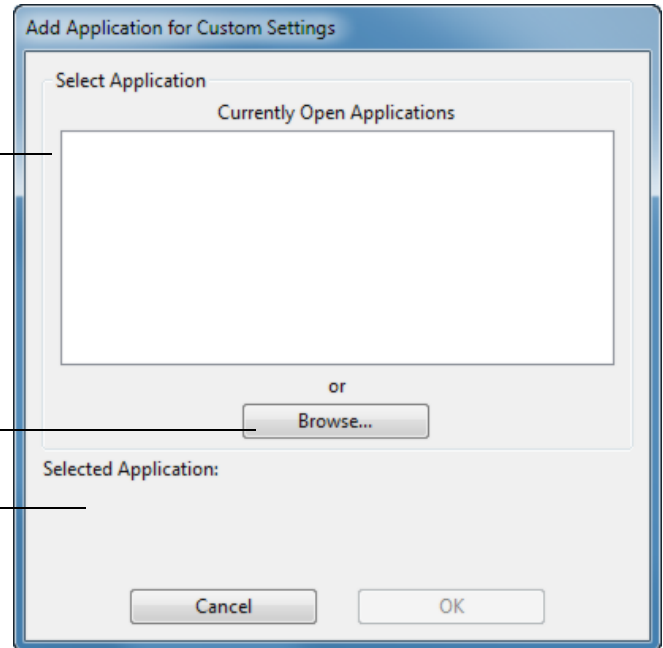
CREATING AN APPLICATION-SPECIFIC SETTING

To create an application-specific setting, first choose the pen display and pen for which you want to create an application-specific setting. Then click on the APPLICATION list's [+] button to display the ADD APPLICATION FOR CUSTOM SETTINGS dialog box.

Choose from one of two methods to select an application:

- Open the application for which you want to create custom settings, and then select that application from the CURRENTLY OPEN APPLICATIONS BOX.
- BROWSE to select the executable file of any application installed on your computer.

Your selection is added to the SELECTED APPLICATION box, where the name of the selected application is displayed.



Note: If two programs have the same executable file name, they will share the same customized settings.

After adding an application, its icon appears in the APPLICATION list whenever the pen is selected in the TOOL list. Select the application and then customize the control panel tab settings for your pen and the selected application.

Once you have created application-specific settings, applications that have not been customized in this manner will use the TOOL settings for ALL OTHER.

Tip: First customize settings for one application. When you feel comfortable with the process, you can create more application-specific settings.





CHANGING APPLICATION-SPECIFIC SETTINGS

To change pen settings for a specific application, select PEN and the application and then customize the tab settings.

REMOVING APPLICATION-SPECIFIC SETTINGS

To remove an application-specific setting:

1. In the TOOL list, select the PEN. Then, in the APPLICATION list, select the application you want to remove from the list.
2. Click on the APPLICATION list's [-] button. In the dialog box that appears, click DELETE to confirm your selection. The selected application is removed from the list, along with any custom pen settings that you may have created for it.

Tip: To quickly remove all application-specific settings from the pen, remove the PEN from the TOOL list. Then place the pen back on the pen display. The PEN will be added back to the TOOL list using the default settings.





TROUBLESHOOTING

Most of the time your interactive pen display will work flawlessly. But if you are having trouble, Wacom recommends you do the following:

1. If the Wacom driver failed to load properly, first perform the recommended action in any error message that may appear on your screen. If that does not solve the problem, review the troubleshooting procedures in this chapter.
2. If the pen display does not function properly, refer to the troubleshooting sections on the following pages. See also [Display troubleshooting](#), or look in the [Pen tablet troubleshooting](#). Your problem may be described there and you can try the solution offered.
3. Check the product FAQs (Frequently Asked Questions) on the Wacom website for your region.
4. If you are having a compatibility conflict between the pen display and a new hardware or software product, consider downloading an updated software driver. Wacom periodically updates the software driver to maintain compatibility with new products. See [Obtaining driver downloads](#).
5. If you have tried the suggestions in this guide and still cannot resolve the problem, then contact Wacom for Technical Support. See the [Technical support options](#) for information on where to obtain support for your region.

[Testing the interactive pen display](#)

[Testing your pen](#)

[Display troubleshooting](#)

[Pen tablet troubleshooting](#)

[Technical support options](#)

[Obtaining driver downloads](#)





TESTING THE INTERACTIVE PEN DISPLAY

1. If the pen display power LED does not light, check the following:
 - First verify that the light on the power adapter is on. If the light is not on, check that the power cable is properly connected to the power adapter and to an active AC outlet.
 - Check that the power adapter cable is securely connected to the pen display and that the power switch is turned on. The power LED will glow orange or blue whenever the pen display is on.
- Important:** Use only an AC adapter specified for use with your pen display. Other adapters may cause damage to your product.
2. If there is no display:
 - Make sure that your computer is turned on. The power LED will light blue when the proper video signal is received. It will glow orange if there is no video signal or if the computer is in a power saving mode.
 - Verify that the pen display is connected to an active DVI or VGA connector.
 - Check that your video card has been properly installed and is functional. If you have another display that is compatible with your video card, you can connect that display to the card in order to verify that the video card is operating correctly.
 3. Verify that the tablet portion of your pen display and pen are working:
 - Press the pen tip against the display and verify that the status LED lights blue.
 - If the LED does not light, verify that the USB cable is plugged into an active USB port. If the interactive pen display is plugged into a USB hub, try plugging it directly into the USB port on your computer.
 - Be sure that the USB port to which you are connecting has not been disabled. It may be necessary to check your system BIOS setting to verify that you have connected the pen display to an active USB port.
 - The status LED will light blue when the pen display is registered as a USB device and the pen tip is pressed against the display.
 4. Check the pen. If you cannot make a selection on the display screen with the pen:
 - Test the pen by pressing the pen tip against the surface of the pen display. The pen display status LED should light blue.
 - Now, without applying pressure to the pen tip but keeping the pen within 5 mm (0.2 inch) of the pen display surface, press the side switch. The status LED should again light blue.
 - If the status LED does not light blue for these tests, be sure you are using a pen specified for use with your product.
 - See [Testing your pen](#) for detailed information.

If you are still having problems, you may have a defective pen or pen display.





TESTING YOUR PEN

If the pen does not work as you expect, it is a good idea to first check the assigned functions or reset the pen to its default conditions. A quick way to reset a pen to its default settings is to remove it from the TOOL list by clicking on the list's [-] button. After the pen has been removed, place it back onto the display screen surface and the pen will be re-added to the TOOL list with its default settings.

Open the Wacom tablet control panel and click on the ABOUT button. In the dialog box that appears, click on the DIAGNOSE... button to open the DIAGNOSTICS dialog box. The DIAGNOSTICS dialog box displays dynamic information about the interactive pen display and pen. This information is used when testing the pen display and your pen.

If more than one pen display unit is connected to your system, be sure to select the unit for which you are testing in the TABLET INFO column.

Note: When testing your pen buttons, if a button is set to RADIAL MENU or OPEN/RUN..., that function will occur when the button is pressed. In this case you may want to change that button's function before testing.

1. While observing the POINTING DEVICE INFO column, bring your pen within 5 mm (0.2 inch) of the display screen. A value for PROXIMITY, the DEVICE NAME, and DEVICE TYPE should be displayed.
2. Move your tool along the pen display screen surface. The X and Y Data values should change to reflect the tool position.
3. Test your pen switches. The pen display status LED should light blue each time you click with the pen tip or press the side switch.
 - Press on the display screen surface with the pen tip. The SWITCHES state and PRESSURE value should change. (PRESSURE should change from approximately 0% with no pressure applied to approximately 100% when full pressure is applied.)
 - Next, press the side switch without pressing the tip to the display screen surface. The SWITCHES state should change. Do this for both positions of the DuoSwitch.

Tip = 1, DuoSwitch (lower position) = 2, DuoSwitch (upper position) = 3

4. When you are done, click on the CLOSE button to exit the dialog box.





DISPLAY TROUBLESHOOTING

If you encounter problems with the display portion of the interactive pen display, refer to the following tables; your problem may be described here and you can try the solution offered. For additional information about color issues, see the documentation that came with your operating system or applications.

[General display problems](#)

[VGA problems](#)

GENERAL DISPLAY PROBLEMS

No display. Power LED is off.	Verify that the AC power cable is connected, and that the pen display power switch is turned on.
No display. Power LED is lit blue.	Check the contrast, brightness, and backlight controls. Adjust as necessary. Or, open the OSD menu and select the RESET option.
The power LED is lit orange. A 'no signal go to power save' message appears briefly on your display screen.	<ul style="list-style-type: none"> Your computer may be in a power management mode. Touch the pen tip to the display screen, move the mouse, or depress any key on your keyboard. Turn off both your computer and the pen display. Check the video cable for bent or broken connector pins. Then properly connect the video cable and turn on the pen display and your computer. Verify that the video card is properly installed.
A 'cable disconnect go to power save' message appears briefly on your display screen.	<ul style="list-style-type: none"> Check that your computer is turned on. Verify that you are using the video cable that came with the pen display. Check that the video cable is fully connected. Turn off both your computer and the pen display. Check the video cable and any video adapters for bent or broken connector pins. Then properly connect the video cable and any necessary adapters.
An 'out of range' message appears briefly on your display screen.	<ul style="list-style-type: none"> The input signal frequency is incorrectly set or not compatible with the interactive pen display. Set the refresh rate to a vertical frequency that is compatible with your pen display. If your video card driver supports adjustment of the horizontal frequency, make sure it is also set to a compatible value. See the Product information for frequency range details. On a single monitor system you will need to connect a different display to change the refresh rate. The resolution or refresh rate is set too high. See the Product information for details about the maximum (native) resolution, refresh rate, and other resolution sizes that can be used with your pen display. Set the display properties to detect plug and play monitors.





A 'set refresh range' message appears briefly on your display screen.

Set the refresh rate to a vertical frequency that is compatible with your pen display. See the [Product information](#) for frequency range details.

The image appears multiple times on the display.

Do not extend the video cable or use an input selector switch box.

When a still image is displayed for a long period of time without refreshing the screen, an after-image remains for a short period of time.

Use a screen saver or other power management feature.

Color quality is inaccurate.

- Open the OSD menu and select the RESET option.
- Be sure the color profile has been installed and is selected as the profile for use with your operating system and applications. (Some models may not include a color profile.)
- Any changes to the contrast setting should be made in small increments as changes in contrast may affect color accuracy.

The color white does not display as white.

- Be sure the color profile has been installed and is selected as the profile for use with your operating system and applications. (Some models may not include a color profile.)
- Verify that the display is operating at the factory default settings. If that is not sufficient, then adjust color as necessary. For details on color management, refer to your operating system and application documentation.
- Verify that the video cable and connector are fully connected.





VGA PROBLEMS

- | | |
|--|--|
| The display ripples or flickers. | <ul style="list-style-type: none">• Open the OSD menu and select the AUTO ADJUST option.• Verify that the display adapter or video card matches the specifications for the interactive pen display.• Adjust the refresh rate in the display properties control panel. |
| <hr/> | |
| The display is not clear. Text or other portions of the screen appear blurred. | <ul style="list-style-type: none">• Set the display resolution of your video card to the maximum (native) resolution that can be used with your pen display. See the Product information for details.• Turn off the pen display, then turn it back on.• Open the OSD menu and select the AUTO ADJUST option. |
| <hr/> | |
| The display and LCD panel are not lined up. The display size is not correct. | <ul style="list-style-type: none">• Open the OSD menu and select the AUTO ADJUST option. Note that some video cards may not show the display in proper sizing. |
| <hr/> | |
| The display ripples or shows a moiré pattern. The display color is not even. | <ul style="list-style-type: none">• Open the OSD menu and select the AUTO ADJUST option. If this does not solve the problem, select the RESET option to set the display back to the factory default settings. |





PEN TABLET TROUBLESHOOTING

If you encounter problems with the tablet portion of the interactive pen display, see the following tables. Your problem may be described here, and you can try the solution offered. For additional information, visit Wacom's website at <http://www.wacom.com/support>.

GENERAL PROBLEMS

The computer does not have an available USB port.	Check if there is an available USB port on a USB hub. If not available you will need to add a USB hub or USB card.
A USB device plugged into one of the pen display USB ports does not function.	<ol style="list-style-type: none"> 1. Make sure the pen display itself is properly connected to a working USB port on your computer. 2. Then be sure the pen display is powered on and that the power LED lights blue. The unit contains a powered USB hub and the integrated USB ports will not work when the power is off. 3. If the USB device does not work, try plugging it into a USB port directly on your computer. 4. If your USB device is still not functioning properly, contact the manufacturer for that particular device.
The pen display power LED is off.	<p>Make sure the pen display power switch is turned on.</p> <p>Check that the AC power adapter is plugged into both the pen display and an active power outlet.</p> <p>Use only a power adapter specified for use with your pen display; other adapters may cause damage to your product.</p>
The pen works only in mouse mode, and does not draw or write with pressure sensitivity.	<p>The driver software for the tablet portion of the pen display was not installed or did not load properly.</p> <p>Make sure the driver software is installed and functioning.</p> <p>Install the driver software in accordance with the instructions found in the Installation section of this manual.</p>
The pen does not draw or write with pressure sensitivity.	<p>Some applications require that you turn on the pressure capabilities within the application or selected tool before the pen will respond as a pressure-sensitive tool.</p> <p>Verify also that your application supports pressure sensitivity.</p>
Clicking is difficult.	<p>Open the Wacom tablet control panel and go to the PEN tab.</p> <p>Try using a lighter TIP FEEL.</p>
The pen selects everything or will not stop sketching.	<p>Open the Wacom tablet control panel and go to the PEN tab.</p> <p>Move the TIP FEEL slider toward FIRM or select DETAILS... and increase the CLICK THRESHOLD setting. If this does not help, see Testing your pen.</p>
Double-clicking is difficult.	<p>Be sure you are quickly tapping the display screen twice in the same place on the pen display active area. Wacom recommends using the side switch to double-click.</p> <p>Open the Wacom tablet control panel and go to the PEN tab.</p> <p>Try increasing the TIP DOUBLE CLICK DISTANCE or using a lighter TIP FEEL.</p> <p><u>Windows</u>: Try setting your system to launch programs with a single click. See Clicking.</p>





<p>You notice a delay at the beginning of pen or inking strokes.</p>	<p>Open the Wacom tablet control panel and go to the PEN tab. Try decreasing the TIP DOUBLE CLICK DISTANCE. If that does not work, move the TIP DOUBLE CLICK DISTANCE slider to the OFF position in order to turn off double-click assist.</p>
<p>You have to press hard with the pen when clicking or writing.</p>	<p>Open the Wacom tablet control panel and go to the PEN tab. Move the TIP FEEL slider toward SOFT, or select the DETAILS... button and decrease the SENSITIVITY and CLICK THRESHOLD settings.</p>
<p>The pen tip does not function.</p>	<p>Be sure you are using the pen that originally came with your interactive pen display. Other pens may not function properly on the pen display.</p> <p>Check the control panel's PEN tab and verify that a CLICK function is assigned to the pen tip.</p> <p>Make sure the status LED lights blue when the tip is pressed. If the LED does not light, verify that the USB cable is plugged into an active port on your computer or on a USB hub.</p> <p>If the LED still does not light, you may have defective hardware (see Troubleshooting).</p>
<p>The pen tip and screen cursor do not properly line up.</p>	<p>Open the Wacom tablet control panel and select the CALIBRATE tab. Continue with Calibrating the pen display.</p>
<p>Changing the function settings for the pen has no effect.</p> <p>The pen side switch does not work.</p>	<p>Make sure you change the settings for the pen and application that you are using. See Application-specific settings.</p> <p>Be sure you are using the pen that originally came with your pen display. Other pens may not function properly on the pen display.</p> <p>Be sure to press the side switch when the pen tip is within 5 mm (0.2 inch) of the pen display active area. Do this without pressing down on the pen tip.</p> <p>In the Wacom tablet control panel, verify that the side switch is set to the proper function you are expecting to occur for the application and tool you are using.</p> <p>Check also the SIDE SWITCH MODE. If CLICK & TAP is selected, you will need to first press the side switch then touch the pen tip to the pen display screen surface in order to perform a click function.</p> <p>Make sure the status LED lights blue when you press the side switch. If not, verify that the USB cable is plugged into an active USB port on your computer or on a USB hub; the LED will not light if the USB cable is not plugged into an active port.</p> <p>If the LED does not light, you may have defective hardware (see Troubleshooting).</p>
<p>The screen cursor moves but it does not jump to the pen tip location when the pen is placed on the display screen, and it does not follow the pen tip when the pen is moved across the display.</p>	<p>Make sure the Wacom driver has loaded properly by opening the Wacom tablet control panel. If the driver did not load you will see an error message. If an error message appears, reboot your computer. If the problem persists, refer to the Installation instructions and reinstall the Wacom driver software. (For Macintosh, you must restart your computer after installing the Wacom driver for proper operation.)</p> <p>If you have customized the side switch on your pen to toggle between pen mode and mouse mode, make sure that your pen display is operating in pen mode.</p>





When using the pen display on a multiple monitor system, you cannot use the pen to control the other monitor(s).

Set a pen button to [DISPLAY TOGGLE](#), and then press that button to cycle between pen control for the pen display and your other displays.

You can also use your pen to control the other monitors in mouse mode. To use mouse mode, first set a pen side switch function to MODE TOGGLE.... Then use the switch to toggle between pen mode and mouse mode.

The line you are sketching does not line up with the location of the screen cursor.

To function properly, some applications require that the pen is set to pen mode. Make sure the pen has not been toggled to mouse mode.

If the pen is set to pen mode and the problem still exists, then you may have a corrupted preferences file. Follow the instructions in the Windows or Macintosh troubleshooting sections to create a new preferences file.

The computer does not go to sleep.

When you are not using the pen, remove it from the pen display surface or the pen display will continue to send data, keeping the computer awake.

The screen cursor jumps back when using your regular mouse or trackball.

When the pen is not in use, place it in the pen storage compartment, or at some location near the pen display – but not on the display. Leaving your pen on the display may interfere with screen cursor positioning when using other input devices.

The screen cursor moves erratically or jumps around on the display screen when another tablet is connected to your computer.

The tablet portion of the interactive pen display emits electromagnetic waves at a certain frequency. If another tablet is too closely placed to the unit it may interfere with screen cursor positioning. If this occurs, move the tablet further away from the pen display.

When working in some applications, the ExpressKeys perform a different function than what is set in the Wacom Tablet control panel.

Some applications can override and control the ExpressKey functions.

If using application-specific settings, be sure you have updated the settings for the application you are working with.





MULTI-TOUCH PROBLEMS



Multi-touch does not work.

Enable touch by pressing an ExpressKey that is set to TOUCH ON/OFF. Otherwise, open the Wacom Tablet control panel, click on the TOUCH icon, and go to the STANDARD GESTURES, MY GESTURES, or TOUCH OPTIONS tab. Be sure the ENABLE TOUCH option is selected.

Multi-touch does not seem to fully work. The screen cursor can be moved, but more complex actions or gestures do not work.

If the tablet driver does not load properly, basic touch movement will be recognized but other actions and gestures will not. Install the driver software.

The pen display does not reliably recognize multi-finger touch.

If you hold your fingers too close together, the pen display may not recognize them as being separate. Try moving your fingers a little further apart.

Rotation gestures do not seem to work consistently, or not at all.

Rotation may work differently depending on the application you are working with. For example, rotation may work smoothly, in 90-degree increments, or not at all.

For best recognition of this gesture, start with your fingers positioned diagonally on the tablet surface and keep them at least 25 mm (1 inch) apart.





WINDOWS-SPECIFIC PROBLEMS

You suspect the pen display preferences may be corrupted, or want to make certain that all settings are at their factory defaults.

Use the Wacom tablet Preference File Utility to work with your preferences.

Close any open applications.

Windows 8: From the Windows 8 Start screen, click the WACOM TABLET PREFERENCE FILE UTILITY tile. If you are using the Windows 8 Classic Desktop, press the Windows key on your keyboard, or select the Windows icon in the Charms bar, to access the Start screen.

Windows 7: Open the utility by clicking the START icon and selecting ALL PROGRAMS. Select WACOM TABLET and WACOM TABLET PREFERENCE FILE UTILITY.

- Then, delete the tablet preferences as follows:

Single user. In the TABLET PREFERENCE FILE UTILITY dialog box, click the REMOVE button under MY PREFERENCES to delete the preferences for the current user.

Multiple users. Click the REMOVE button under ALL USER PREFERENCES to delete preferences for multiple users. Note that administrator rights are required to delete preferences for all users. Relaunch any currently open tablet-aware applications that you may be running.

You can quickly restore tablet preferences that have been backed up by clicking RESTORE... under MY PREFERENCES.





MACINTOSH-SPECIFIC PROBLEMS

At startup, a dialog box appears telling you that either the driver failed to load or the pen display preferences have not yet been created.

The tablet portion of the pen display was not detected at startup. Make sure the USB interface cable is securely connected to an active USB port on your computer or to a USB hub. Make sure that the pen display power LED is on. If this does not correct the problem, see [Troubleshooting](#).

From the GO menu, select the UTILITIES folder and launch the SYSTEM PROFILER. Select USB from the HARDWARE section of the CONTENTS list. A Wacom USB pen display model should be listed. If a pen display model is not listed, check the pen display USB cable connection or try plugging the pen display into a different USB port.

If this does not help, contact Wacom for Technical Support. See [Technical support options](#).

You suspect the pen display preferences may be corrupted, or want to make certain that all settings are at their factory defaults.

Use the Wacom tablet Utility to work with your preferences. Close any open applications. Open the main APPLICATIONS folder. Then open the WACOM TABLET folder and run the WACOM TABLET UTILITY.

- It is a good idea to first back up your tablet preferences. In the WACOM TABLET UTILITY dialog box, select CURRENT USER or ALL USERS. Then click BACKUP... and follow the prompts.
- Then, delete the tablet preferences as follows:
 - Single user. When the utility starts, select CURRENT USER and click on the REMOVE button. Log out, then log back in. When the pen display driver loads it will create a new preferences file with the factory defaults.
 - Multiple users. When the utility starts, select ALL USERS and click on the REMOVE button. Log out, then log back in. When the pen display driver loads it will create new preferences files with the factory defaults.

You can quickly restore tablet preferences that have been backed up for the CURRENT USER or ALL USERS by clicking on the RESTORE... button within the utility.

Note: Do not manually remove the WACOM TABLET.PREFPANE file from the main LIBRARY PREFERENCEPANES folder. This file is only to be removed when uninstalling the Wacom software driver, and then only when using the WACOM TABLET UTILITY.

Recalibrate the pen display.





Ink does not work correctly with the pen display.

There may be a problem with the Ink preferences. Remove the damaged preference files as follows. They will be re-created when you enable handwriting recognition.

1. Open the SYSTEM PREFERENCES pane, choose SHOW ALL and select INK. Then turn off handwriting recognition.
2. From the GO menu, choose your HOME. Open the LIBRARY and PREFERENCES folders. Remove the following preferences:
 - COM.APPLE.INK.FRAMEWORK.PLIST
 - COM.APPLE.INK.INKPAD.PLIST
 - COM.APPLE.INK.INKPAD.SKETCH
3. Go back to SYSTEM PREFERENCES and INK, and then enable handwriting recognition.
4. Test the Ink function using your Wacom pen display and pen.

If this procedure does not resolve your problem with Ink, contact Apple Support for further assistance. Wacom is not the software manufacturer for Ink and we are limited in our abilities to support a third party software application.





TECHNICAL SUPPORT OPTIONS

If you have a problem with your interactive pen display, first check the appropriate [Installation](#) section in this guide to make sure the unit is installed correctly. Then review the [Troubleshooting](#) procedures.

You can also check the product FAQs (Frequently Asked Questions) on the Wacom website for your region, or request assistance through the Support or Customer Care area of the website for your region.

If you have an Internet connection, you can download the latest software drivers from the Wacom website for your region. See [Obtaining driver downloads](#).

If you cannot solve the problem and you think your Wacom product is not working properly, contact the Wacom support staff for the area where your product was purchased.

When you call, you should be at your computer with the following information available:

- This manual.
- Pen display serial number. (See the label on the back of the unit.)
- Driver version number. (See the Installation CD or click on the Wacom tablet control panel ABOUT button.)
- The make and model of your computer, and operating system version number.
- The make, model, and connection type of your video card.
- A list of peripheral devices attached to your computer.
- The software application and version you were using when the problem occurred.
- The exact wording of any error message that appeared on your screen.
- What happened and what you were doing when the problem occurred.
- How you tried to solve the problem.





OBTAINING DRIVER DOWNLOADS

Wacom periodically updates the software driver for the tablet portion of the interactive pen display to maintain compatibility with new products. If you are having a compatibility problem between your interactive pen display and a new hardware or software product, it may be helpful to download a new Wacom software driver (when available) from the Internet.

USA, Canada, Central and South America

Worldwide Web: <http://www.wacom.com/productsupport> Software updates

Europe, Middle East and Africa

Worldwide Web: <http://www.wacom.eu/downloads> Software updates

Japan

Worldwide Web: <http://tablet.wacom.co.jp/download> Software updates (Japanese)

Asia Pacific (English)

Worldwide Web: <http://www.wacom-asia.com> Software updates (English)

China

Worldwide Web: <http://www.wacom.com.cn> Software updates (Simplified Chinese)

Korea

Worldwide Web: <http://www.wacomkorea.com> Software updates (Korean)

Taiwan

Worldwide Web: <http://www.wacom.com.tw> Software updates (Traditional Chinese)





APPENDIX

This section contains tips on caring for your interactive pen display, instructions on how to uninstall the software, your license and warranty, and more.

[Caring for the interactive pen display](#)

[Replacing the pen tip](#)

[Using an alternate mount or stand](#)

[Uninstalling the interactive pen display](#)

[Managing preferences](#)

[Installing multiple tablets](#)

[Pen and digital ink capabilities in Windows](#)

[About the Windows Tablet PC Input Panel](#)

[Product information](#)

[Product specifications](#)

[Warranty Service in the U.S.A. and Canada](#)

[Warranty Service Outside of the U.S.A. and Canada](#)

CARING FOR THE INTERACTIVE PEN DISPLAY

Keep the pen and the LCD screen surface clean. Dust and dirt particles can stick to the pen and cause excessive wear to the display screen surface. Regular cleaning will help prolong the life of your LCD screen surface and pen.

Keep the pen display and pen in a clean, dry place and avoid extremes in temperature. Room temperature is best. The pen display and pen are not made to come apart. Taking apart the product will void your warranty.

Important: Take care to never spill liquids onto the pen display or pen. Be especially careful of getting the display, or pen buttons and tip wet as they contain sensitive electronic parts that will fail if liquids enter them.

To clean the pen display casing or the pen, use a soft, damp cloth; you can also dampen the cloth using a very mild soap diluted with water. Do not use paint thinner, benzine, alcohol, or other solvents to clean the unit casing or pen.

To clean the display screen, use an anti-static cloth or a slightly damp cloth. When cleaning, apply only a light amount of pressure to the display screen and do not make the surface wet. Do not use detergent to clean the display screen; this may damage the pen display screen. Please note that damage of this kind is not covered by the manufacturer's warranty.



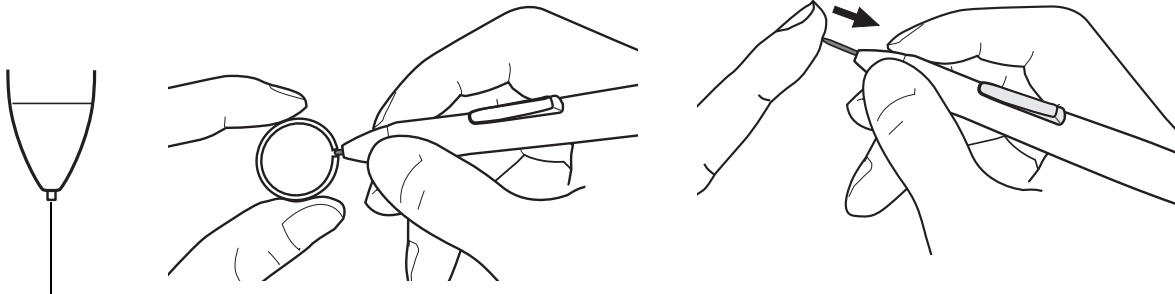
REPLACING THE PEN TIP

The pen tip (nib) will wear with normal use. Excessive pressure will cause it to wear sooner. If your pen display has a coated surface a worn nib may cause damage. To avoid this, periodic tip replacement is recommended.

When the nib gets too short or develops a sharp edge, replace it with one of the extra nibs that came with the pen.

Clasp the old nib with a Wacom nib extraction tool, pair of tweezers, needle-nosed pliers, or similar instrument and pull it straight out of the pen.

Slide the end of the new nib straight into the barrel of the pen. Firmly push the nib until it stops. The new nib will slide into the correct position.



Replace the pen nib when it gets too short, or less than 1 mm (0.04 inch).

Warning

Choking hazard. Prevent children from swallowing the pen nib or side switch. The pen nib or side switch may accidentally be pulled out if children are biting on them.

Important: When not in use, place the pen in the pen storage compartment or lay it flat on your desk. Take care not to damage the pen nib when inserting or removing the pen from the storage compartment. To maintain the sensitivity of your pen, do not store the tool in a container where it will rest on its tip.

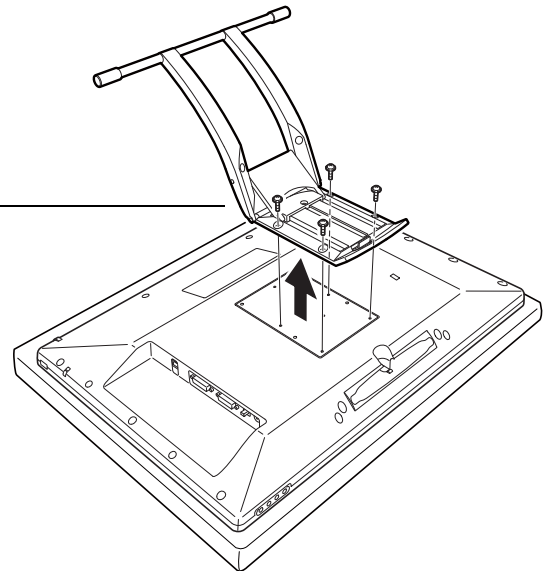
USING AN ALTERNATE MOUNT OR STAND

If you will be using the interactive pen display in an installation that requires the use of an alternate mounting platform, you can remove the adjustable stand from the unit and mount the pen display onto any mount arm or stand conforming to the VESA 100 mm standard.

Mounting screws that are 4 mm wide with a 0.7 mm pitch (M4 Regular), with a screw clearance depth of 15 mm are required. Note: Exceeding the clearance depth of 15 mm will damage the internal components of the pen display.

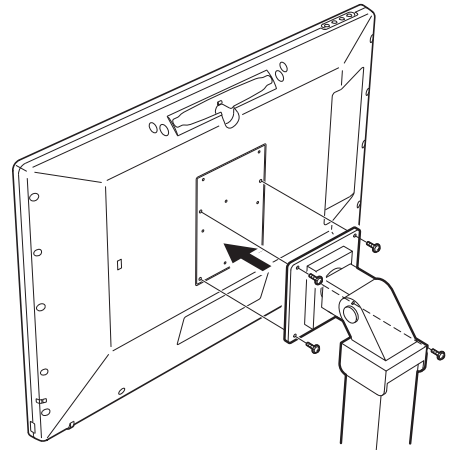
To remove the adjustable stand and attach the pen display to a different mounting platform:

1. Turn off your computer and power off the pen display. Then disconnect all cables from between the unit and your computer.
2. Protect the display screen surface by spreading a soft cloth onto a flat table and placing the pen display face down on the cloth.
3. Remove the four screws and lift the adjustable stand assembly away from the body of the unit.
4. Using the appropriate screws for your mounting platform, firmly attach the pen display to the alternate mounting platform.
5. Refer to the [Installation](#) instructions and reattach the cabling.



Caution

When attaching the pen display onto an alternate mounting platform, be sure to follow all instructions in the documentation supplied by the platform manufacturer. If improperly installed, the unit could fall, resulting in damage to the unit or physical injury.





UNINSTALLING THE INTERACTIVE PEN DISPLAY

Follow the appropriate procedure below to remove the Wacom driver software and the pen display from your system.

Important: When you remove the Wacom driver software from your system, your Wacom interactive pen display will no longer operate with full tablet functionality but will continue to function as a mouse device.

Windows 8:

1. From the Windows 8 Start screen, right-click in the screen's bottom left corner and chose CONTROL PANEL from the pop-up menu. If you are using the Windows 8 Classic Desktop, press the Windows key on your keyboard, or select the Windows icon in the Charms bar, to access the Start screen.
2. Choose UNINSTALL A PROGRAM or ADD OR REMOVE PROGRAMS.
3. Select WACOM TABLET and click on the REMOVE button

Windows 7, Vista and XP:

1. Click START and choose CONTROL PANEL.
2. Click UNINSTALL A PROGRAM or ADD OR REMOVE PROGRAMS.
3. Select WACOM TABLET and click on the REMOVE button.

Note: You may need to reboot your computer for the uninstall to take effect.

Macintosh:

1. From the GO menu, choose APPLICATIONS and open the WACOM TABLET folder.
2. Double-click on the WACOM TABLET UTILITY icon and select the TABLET SOFTWARE: REMOVE button. Enter your administrator login name and password.
3. After the removal is completed, click OK.
4. Shut down your computer and turn off the pen display. When your computer and pen display are off, disconnect the pen display from your computer.





MANAGING PREFERENCES

Use the Wacom tablet preferences utility to manage your pen display preferences for a single user or multiple users.

Close any open applications.

Windows 8: From the Windows 8 Start screen, click the WACOM TABLET PREFERENCE FILE UTILITY tile. If you are using the Windows 8 Classic Desktop, press the Windows key on your keyboard, or select the Windows icon in the Charms bar, to access the Start screen.

Windows 7, Vista and XP:

1. Click the START icon and select ALL PROGRAMS.
2. Select WACOM and WACOM TABLET PREFERENCE FILE UTILITY.

Set your preferences in all Windows systems as follows:

- To remove preferences for the current user, click on the REMOVE button under MY PREFERENCES.
- To delete preferences for multiple users, click on the REMOVE button under ALL USER PREFERENCES. Administrator rights are required to delete preferences for all users. Relaunch any currently open tablet-aware applications that you may be running.
- To back up your preferences, click on the BACKUP... button under MY PREFERENCES.
- To restore preferences that you had previously backed up, click on the RESTORE... button under MY PREFERENCES.

Be sure to carefully follow any prompts that may appear.

For Macintosh, open the main APPLICATIONS folder. Then open the WACOM TABLET folder and run the WACOM TABLET UTILITY.

- To remove preferences, select CURRENT USER or ALL USERS. Then click on the REMOVE button. Log out, then log back in. When the software driver loads it will create a new preferences file with the factory defaults.
- To back up your preferences, select CURRENT USER or ALL USERS. Then click on the BACKUP... button.
- To restore preferences that you had previously backed up, select CURRENT USER or ALL USERS. Then click on the RESTORE... button.

Be sure to carefully follow any prompts that may appear.



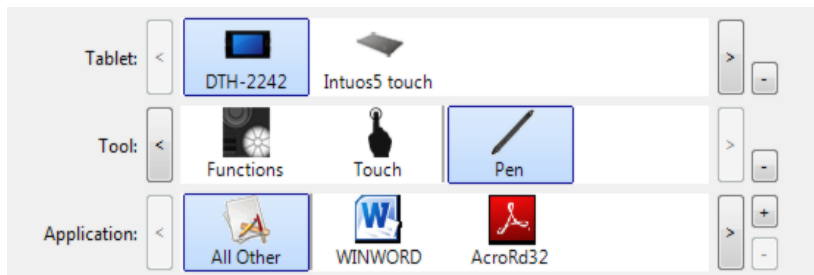


INSTALLING MULTIPLE TABLETS

The TABLET list displays an icon for any supported pen display or tablet that has been detected on your system, and allows you to select the pen display or tablet for which your changes will apply.

Select a pen display or tablet icon for which to customize pen and application settings.

- The control panel will not launch unless a supported pen display or tablet is connected to the computer.
- Settings can only be viewed or changed for an attached pen display or tablet.



To add a new pen display or tablet, connect it to your computer. For USB products, the system searches the USB ports. When the new pen display or tablet is found, it is automatically initialized.

To remove one of multiple tablets from the driver, in the Wacom tablet control panel select the pen display or tablet icon to be deleted and click on the [-] button next to the TABLET list.

- A pen display or tablet cannot be deleted from the control panel list unless it is attached to the computer.
- Note that you will need to restart your computer before you can again add the pen display or tablet to the driver.





PEN AND DIGITAL INK CAPABILITIES IN WINDOWS

Microsoft Windows 8, Windows 7 and Vista provide extensive support for pen* input. When using the interactive pen display with a computer running Windows 8, Windows 7 or Vista, your experience is enhanced by powerful note taking, handwriting recognition, fast navigation, and other digital inking options designed to give you quick, intuitive results with the Wacom pen.

- **Note taking.** Use your Wacom pen to jot notes and capture quick sketches in Windows Journal. Journal simulates a physical notebook, but with the advantages of digital note taking. You can choose from a variety of pen, marker, and highlighter tools. Journal also includes a powerful search engine that can even locate your handwritten content.
- **Handwriting recognition.** Because Windows 8, Windows 7 and Vista include powerful handwriting recognition capabilities, you can use your Wacom pen to quickly enter handwritten information anywhere the computer accepts typed input. You can convert your handwritten content to typed text at any time.
- **Gestures.** Use your Wacom pen to make simple gestural movements on the pen display to trigger customizable actions for navigation, editing, and other functions. To customize your gestures, select the FLICKS tab in the PEN AND INPUT DEVICES control panel.
- **Digital Ink in Microsoft Office 2007.** Use your Wacom pen to full advantage with the enhanced digital mark-up and inking tools available in Microsoft Office 2007 or later applications running on Windows 8, Windows 7 or Vista. Found on the REVIEW tab within applicable applications, these tools provide a consistent set of inking options. For quick access, you can add specific inking tools to the Quick Access Toolbar located at the top of each application.

To make the most of the pen in Microsoft Windows, be sure to study the documentation that came with your system, including the Windows training tools and Tablet PC tutorial. You can access the Tablet PC Pen Training from the START menu by choosing ALL PROGRAMS, TABLET PC, and TABLET PC PEN TRAINING.

Note: The following workarounds in the software driver for the tablet portion of the pen display improve performance in Windows 8, Windows 7 and Vista:

- To improve performance, Pen Flicks and 'press-and-hold-to-right-click' features are disabled in some graphics applications such as Photoshop.
- There is no pressure sensitivity in Journal and other Ink features when both the Flicks and 'press-and-hold-to-right-click' features are disabled in some graphics applications.

* Pen features supported in all versions of Windows 8, Windows 7 and Vista except Windows 7 Starter and Home Basic, and Windows Vista Home Basic.





ABOUT THE WINDOWS TABLET PC INPUT PANEL

The Windows 8, Windows 7 or Vista Input Panel enables you to use handwriting or an on-screen keyboard to directly enter text with your Wacom pen. There are different ways to launch the Input Panel:

- Click on the Input Panel icon which appears when you move the screen cursor into a text entry area.
- Click on the Input Panel tab, located by default on the left edge of the display screen.
- Click on the Tablet PC Input Panel icon located on the Windows taskbar. If the icon is not visible, right-click on the taskbar, select **TOOLBARS**, and **TABLET PC INPUT PANEL**.

To customize the Input Panel:

1. First open the Input Panel and then click on **TOOLS** in the menu bar.
2. Select **OPTIONS** to open the Input Panel Options dialog box.
3. Customize the Input Panel settings for the way you like to work.

To learn more about using your Wacom pen in Microsoft Windows and Office 2007 or later, study the documentation that came with your system and Microsoft Office applications. Be sure to take advantage of the Windows training tools, including the Tablet PC tutorial, available from Microsoft.





PRODUCT INFORMATION

To learn more about your interactive pen display and how to take full advantage of the many pen and [digital inking](#) features in Microsoft Windows 8, Windows 7 and Vista, visit the Wacom website for your region:

USA, Canada, Central and South America	http://www.wacom.com/products
Europe, Middle East and Africa	http://www.wacom.eu
Japan	http://tablet.wacom.co.jp
Asia Pacific (English)	http://www.wacom.asia
China (Simplified Chinese)	http://www.wacom.com.cn
Korea	http://www.wacom.asis/kr
Taiwan	http://www.wacom.asia/tw
Thailand	http://www.wacom.asia/th

PRODUCT SPECIFICATIONS

Specifications for the DTK-2241 and DTH-2242 interactive pen displays are provided in the Important Product Information (IPI) document included with your driver download.

LICENSES AND WARRANTIES

License and warranty conditions and regulatory statements for the DTK-2241 and DTH-2242 interactive pen displays are provided in the Important Product Information (IPI) document included with your driver download.

ORDERING PARTS AND ACCESSORIES

For a list of available parts and accessories, visit the Wacom website for your region.

To purchase parts and accessories in the USA or Canada, call 1.888.884.1870 (toll-free) or visit Wacom's website at <http://www.direct.wacom.com> (USA only).

To purchase parts and accessories in Europe, call +49 (0)180.500.03.75 or send an email to spareparts@wacom.eu. Or, visit <http://shop.wacom.eu>. You can also contact your local dealer, distributor, or technical support using the appropriate number for your region.

To purchase parts and accessories in Australia, Singapore, Taiwan and Korea, please visit: www.BuyWacom.com.au, www.BuyWacom.com.sg, www.BuyWacom.com.tw and www.BuyWacom.co.kr, respectively.

To purchase parts and accessories in other countries, please contact your local dealer or distributor.

Please note that not all parts and accessories may be available in all regions.





WARRANTY SERVICE IN THE U.S.A. AND CANADA

The full text of your product warranty is provided in the Important Product Information (IPI) document that is included with your driver download.

To obtain Warranty service within the U.S. or Canada contact:

Wacom Customer Care Center

Phone: 1.360.896.9833

Email Inquiry form: <http://www.wacom.com/support>

WARRANTY SERVICE OUTSIDE OF THE U.S.A. AND CANADA

The full text of your product warranty is provided in the Important Product Information (IPI) document that is included with your Installation CD.

For products purchased or used outside of the United States and Canada, the warranty period may be determined by regional requirements. The warranty period for your pen display is described on the Support page of the Wacom web site for your region. You may also contact Wacom Technical Support.

WACOM TECHNICAL SUPPORT IN ASIA PACIFIC (EXCEPT JAPAN AND CHINA)

Detailed Asia Pacific Limited Warranty policy and product registration may be found online at <http://www.wacom.asia>.

To obtain technical support or Warranty service within Southeast Asia, Oceania and Taiwan, please contact Wacom Customer Support Service.

Phone numbers can be found here: <http://www.wacom.asia/support/contact>

Should you have any questions about this Agreement, or to contact Wacom for any reason, please write to:

IN NORTH AND SOUTH AMERICA CONTACT:

Wacom Technology Corporation
1311 SE Cardinal Court
Vancouver, Washington 98683
U.S.A.

IN JAPAN CONTACT:

Wacom Co., Ltd.
2-510-1 Toyonodai
Otone-Machi, Kitasaitama-Gun
Saitama, 349-1148
Japan

IN ASIA PACIFIC CONTACT:

Wacom Co., Ltd.
Sumitomo Fudosan Shinjuku Grand Tower, 31F
8-17-1 Nishi-Shinjuku, Shinjuku-ku
Tokyo, 160-6131
Japan

IN MAINLAND CHINA (EXCEPT HONG KONG) CONTACT:

Wacom China Corporation
Unit 2807, 28th Floor, SK Tower
No 6 Jia, Jianguomenwai Avenue,
Beijing, 100022, China
E-mail: support@wacom.com.cn





GLOSSARY

Active area. The area of the pen display where your pen is detected.

Application-specific settings. Pen display tool and tablet settings that have been customized for individual applications. The Wacom tablet control panel enables you to customize the pen to behave uniquely in different applications. Your application-specific settings are in effect whenever you use the application. See also [Application-specific settings](#).

Aspect. The ratio between the vertical and horizontal dimension of the active area on the pen display.

Click force. The amount of force you must apply to the tip of your pen for a click to occur.

Double-click assist. A function of the Wacom tablet control panel that makes it easier to double-click by setting the size of the double-click distance.

Double-click distance. The maximum distance (in screen pixels) that the cursor can move between clicks and still be accepted as a double-click. Increasing the double-click distance makes double-clicking easier, but may cause a delay in brush strokes in some graphics applications.

Double-click speed. The maximum time that can pass between clicks and still be accepted as a double-click.

Journal. A Microsoft Windows application that electronically simulates a physical journal pad, but with the advantages of digital note taking. For example, you can create quick sketches and jot handwritten notes that can be converted to text and sent on to colleagues for digital mark-up. Journal includes a variety of pen, marker, and highlighter tools. Additionally, your handwritten content is searchable within Journal.

Modifier. Modifier keys include SHIFT, ALT, and CTRL for Windows, or SHIFT, CONTROL, COMMAND, and OPTION for Macintosh. You can customize your pen functions to simulate a modifier key.

Mouse acceleration. A setting that allows you to adjust the screen cursor acceleration when using mouse mode.

Mouse mode. A method for positioning the screen cursor. When you place the pen on the pen display, you can move the screen cursor with a “pick up and slide” motion similar to using a traditional mouse. This is known as relative positioning. See also [pen mode](#).

Mouse speed. A setting that allows you to adjust the speed at which your screen cursor moves when using mouse mode.

Nib. The replaceable pen tip.





Pen mode. A method of positioning the screen cursor. Wherever you place your pen on the interactive pen display, the screen cursor will jump to the corresponding point on the screen. This is known as absolute positioning, and is the default setting for the pen. Also, pen mode allows you to quickly position the screen cursor without having to first find it and then move it across the desktop. See also [mouse mode](#).

Pixel. The smallest unit of measure on your display screen.

Pressure sensitive. A quality of the Wacom pen tip that senses the amount of pressure being applied. This is used to create natural-looking pen and brush strokes in applications that are pressure sensitive.

Pressure-sensitive application. Any application that supports pressure-sensitive input.

Proximity. The height above the pen display [active area](#) where the pen is detected.

Radial Menu. A hierarchical menu (in radial format). Each level of the menu consists of eight menu slices which may contain various features and options to choose from. You can customize the buttons of your pen to display this menu.

Screen cursor. The pointer on the display screen. Screen cursors come in different shapes (such as an I-beam, arrow, or box), depending on which application you are running.

Tablet PC Input Panel (TIP). The Microsoft Windows Tablet PC Input Panel enables you to use your Wacom pen to create handwritten notes or work with an on-screen keyboard. The Input Panel dynamically converts your handwriting to text. The information you create can then be inserted into other documents, spreadsheets, or illustrations.

USB. Universal Serial Bus. A hardware interface standard for connecting computer peripheral devices. USB ports support hot-plugging, which allows you to connect or disconnect a USB device without turning off your computer.

Wintab. An interface standard used by Windows applications for receiving tablet information. The pen display supports all Wintab-compatible applications under Windows.





INDEX

Accessories		Features	
ordering	78	pen	11
Adjusting, pen display	23	pen display	8
Application-specific settings	52	Front view, pen display	8
changing	54	Functions, button	47
creating	53	General problems, troubleshooting	61
removing	54	Holding the pen	20
Auto-sync	23	Incline, adjusting	10
Button functions	47	Information, product	78
Calibrating, pen display	41	Installation	12
Care, for pen display	70	for display portion	13
Cintiq		for pen tablet portion	17
the multi-touch experience	26	software	18
Cleaning		USB cable	17
pen	70	Installing	
pen display	70	multiple pen displays	75
Clicking, with pen	21	multiple tablets	75
Control panel		LCD monitor installation, for pen display	13
lists	40	Macintosh-specific problems, troubleshooting	66
opening	38	Manual	
overview	39	about	5
tabs	40	navigating	6
Customizing		Monitors, working with multiple	22
ExpressKeys	45	Mount, using alternate	72
multi-touch		Multiple monitors, working with	22
custom functions	36	Multi-touch	
standard functions	35	adjusting touch speed	34
pen	42	custom touch functions	36
pen display	38	customizing	33
Digital ink, capabilities in Windows	76	disabling	37
Display		DTH-2242	26
problems, general	58	navigating with	26
troubleshooting	58	options	26
Display Toggle, working with	51	problems, troubleshooting	64
Double-click, adjusting	42	setting navigation features	34
Downloads, obtaining driver	69	speed, adjusting	34
Dragging, with pen	21	standard touch functions	35
Driver downloads	69	testing	36
DuoSwitch, customizing for pen	44	testing touch	36
Ergonomics	19	the experience	26
ExpressKeys		Navigating the manual	6
using	24	Navigation, customizing for multi-touch	34
Factory presets	23	On Screen Display (OSD)	24





Ordering, parts and accessories	78	Requirements, system	12
Parts		Settings	
ordering	78	application-specific	52
Pen		On Screen Display (OSD)	24
buttons, customizing	44	user	23
cleaning	70	Side switch, using	22
clicking with	21	Software installation	18
customizing	42	Specifications	
dragging with	21	product	78
features	11	Stand, using alternate	72
holder	11	System requirements	12
holding	20	Tablet PC Input Panel, about	77
positioning with	20	Tablets, installing multiple	75
replacing tip	71	Technical support, options	68
testing	57	Testing	
tether	11	multi-touch	36
using	20	pen	57
using side switch	22	pen display	56
working with pressure sensitivity	22	Tip feel, adjusting	42
Pen display		Touch	
about	7	basic actions	26
adjusting	23	disabling	27
incline	10	multi-touch gestures	26
calibrating	41	standard functions	35
caring for	70	Troubleshooting	55
cleaning	70	display	58
customizing	38	general problems	61
features	8	Macintosh-specific problems	66
front view	8	multi-touch problems	64
installation	12	pen tablet portion	61
installing multiple units	75	Windows-specific problems	65
LCD monitor installation	13	Uninstalling	73
pen tablet installation	17	User settings	23
rear view	9	Using	
testing	56	ExpressKeys	24
uninstalling	73	multi-touch	26
USB cable installation	17	Using, pen	20
working with	19	VGA problems	60
Pen tablet, troubleshooting	61	Windows-specific problems, troubleshooting	65
Pen tip, replacing	71	Working, with pen display	19
Positioning, with pen	20		
Precautions	7		
Preferences, managing	74		
Pressure sensitivity, working with	22		
Product information	78		
Radial Menu			
customizing	46		
using	46		
Rear view, pen display	9		







WACOM INTERNATIONAL OFFICES

WACOM TECHNOLOGY CORPORATION

1311 SE Cardinal Court
Vancouver, WA 98683
U.S.A.

Telephone: +1.360.896.9833
Fax: +1.360.896.9724

WACOM CO., LTD. JAPAN MARKETING AND SALES DIVISION

Sumitomo Fudosan Shinjuku Grand Tower, 31F
8-17-1 Nishi-Shinjuku, Shinjuku-ku
Tokyo 160-6131,
Japan

Internet: <http://tablet.wacom.co.jp>

WACOM CHINA CORPORATION

Unit 2807, 28th Floor, SK Tower
No 6 Jia, Jianguomenwai Avenue,
Beijing, 100022, China

Internet: <http://www.wacom.com.cn>

WACOM AUSTRALIA PTY. LTD.

Unit 8, Stage 1 Cumberland Green
2-8 South Street Rydalmere
NSW 2116 Australia

Telephone: +61.2.9422.6700
Fax: +61.2.9420.2272

WACOM TAIWAN INFORMATION CO., LTD.

Suite 605, 6th floor, No. 205 Tun-Hwa North Road
Taipiei, 105 Taiwan

Telephone: +886.2.2712.2675
Fax: +886.2.2712.9789

WACOM EUROPE GMBH

Europark Fichtenhain A9
47807 Krefeld
Germany

Telephone: +49.(0)2151.3614.0
Fax: +49.(0)2151.3614.111

WACOM CO., LTD. ASIA PACIFIC MARKETING AND SALES DIVISION

Sumitomo Fudosan Shinjuku Grand Tower, 31F
8-17-1 Nishi-Shinjuku, Shinjuku-ku
Tokyo 160-6131,
Japan

Telephone: +81.3.5337.6709
Fax: +81.3.5337.6514

WACOM KOREA CO., LTD.

25th Floor DMC iaan Sangam 2nd Complex, 1653
Sangam-dong, Mapo-gu, Seoul, Korea, 121-270

Telephone: +82.2.557.3894
Fax: +82.2.557.3895

WACOM SINGAPORE PTE. LTD.

3 Bishan Place,
CPF Bishan Building #06-08
Singapore 579838

Telephone: +65.6258.8640
Fax: +65.6258.8697

WACOM INDIA PVT. LTD.

2nd Floor, Elegance Tower
District Centre, Mathura Road
New Delhi 110025, India

Telephone: +91.11.40601200
Fax: +91.11.4060123

